

Datasheet for ABIN1385748  
**anti-CCRN4L antibody (AA 231-330)**[Go to Product page](#)

## 1 Image

## Overview

Quantity:	100 µL
Target:	CCRN4L
Binding Specificity:	AA 231-330
Reactivity:	Rat, Mouse
Host:	Rabbit
Clonality:	Polyclonal
Conjugate:	This CCRN4L antibody is un-conjugated
Application:	Western Blotting (WB), ELISA

## Product Details

Immunogen:	KLH conjugated synthetic peptide derived from human Nocturnin
Isotype:	IgG
Cross-Reactivity:	Mouse, Rat
Predicted Reactivity:	Human
Purification:	Purified by Protein A.

## Target Details

Target:	CCRN4L
Alternative Name:	Nocturnin ( <a href="#">CCRN4L Products</a> )
Background:	Synonyms: CCR4 carbon catabolite repression 4 like S. cerevisiae, CCR4 protein homolog,

## Target Details

CCRN4L, NOC, NOCT\_HUMAN.

Background: Nocturnin is a 431 amino acid circadian deadenylase protein that is expressed in a broad range of tissues with greatest abundance in the liver, kidney and testis. Nocturnin plays a role in circadian regulation as well as diet-induced obesity. The mRNA abundance of Nocturnin exhibits circadian rhythmicity, peaking after dusk in photoreceptors, spleen, heart, kidney and liver. Nocturnin is thought to be responsible for turning off genes that are involved in circadian regulation. In Xenopus retinal photoreceptor cells, the rhythmic regulation of Nocturnin is thought to be controlled by phosphorylated CREB. Mice lacking Nocturnin remain lean on high fat diets with a reduction in visceral fat, which suggests that this protein may also be responsible for lipid metabolism and fat storage.

Gene ID: 25819

Pathways: [Ribonucleoprotein Complex Subunit Organization](#)

## Application Details

Application Notes: WB 1:300-5000  
ELISA 1:500-1000  
IHC-P 1:200-400  
IHC-F 1:100-500  
IF(IHC-P) 1:50-200  
IF(IHC-F) 1:50-200  
IF(ICC) 1:50-200  
ICC 1:100-500

Restrictions: For Research Use only

## Handling

Format: Liquid

Concentration: 1 µg/µL

Buffer: 0.01M TBS( pH 7.4) with 1 % BSA, 0.02 % Proclin300 and 50 % Glycerol.

Preservative: ProClin

Precaution of Use: This product contains ProClin: a POISONOUS AND HAZARDOUS SUBSTANCE, which should be handled by trained staff only.

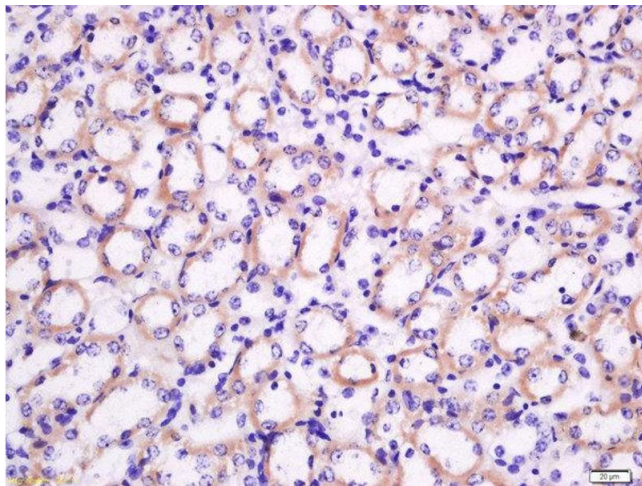
Storage: 4 °C, -20 °C

## Handling

Storage Comment: Shipped at 4°C. Store at -20°C for one year. Avoid repeated freeze/thaw cycles.

Expiry Date: 12 months

## Images



### Immunohistochemistry (Paraffin-embedded Sections)

**Image 1.** Formalin-fixed and paraffin embedded mouse kidney tissue labeled with Rabbit Anti-Nocturnin Polyclonal Antibody, Unconjugated at 1:200 followed by conjugation to the secondary antibody and DAB staining