



Datasheet for ABIN1385774
anti-RANBP2 antibody



[Go to Product page](#)

2 Images

Overview

Quantity:	100 µL
Target:	RANBP2
Reactivity:	Human, Mouse, Rat
Host:	Rabbit
Clonality:	Polyclonal
Conjugate:	This RANBP2 antibody is un-conjugated
Application:	ELISA, Immunofluorescence (Paraffin-embedded Sections) (IF (p)), Immunohistochemistry (Paraffin-embedded Sections) (IHC (p))

Product Details

Immunogen:	KLH conjugated synthetic peptide derived from human RanBP2
Isotype:	IgG
Cross-Reactivity:	Human, Mouse, Rat
Purification:	Purified by Protein A.

Target Details

Target:	RANBP2
Alternative Name:	RanBP2 (RANBP2 Products)
Background:	Synonyms: Nuclear pore complex protein Nup358, Nucleoporin 358, Nucleoporin Nup358, NUP358, P270, RAN binding protein 2, Ran-binding protein 2, RANBP2, RBP2_HUMAN, Transformation related protein 2, TRP 1, TRP 2, TRP1, TRP2, 358 kDa nucleoporin, E3 SUMO-

Target Details

protein ligase RanBP2.

Background: The nuclear pore complex protein, Ran-binding protein 2 (Ran BP-2 or Nup358), contains four Ran-binding domains. Ran BP-2 is a large scaffold cyclophilin-related protein expressed in photoreceptor cells. Ran BP-2 localization at cytoplasmic fibrils emanating from the nuclear pore complex and interaction with the Ran-GTPase support its role in nucleocytoplasmic transport processes. In humans, the Ran BP-2 gene is partially duplicated in a gene cluster and lies in a hot spot for recombination on chromosome 2q. This genetic heterogeneity renders further significance of this genomic region in human disease due to its possible involvement in genetically linked disorders such as juvenile nephronophthisis, congenital hepatic fibrosis and chorioretinal dysplasia.

Gene ID: 5903

Pathways: [Carbohydrate Homeostasis](#), [Regulation of Carbohydrate Metabolic Process](#), [Protein targeting to Nucleus](#)

Application Details

Application Notes: ELISA 1:500-1000
IHC-P 1:200-400
IF(IHC-P) 1:50-200

Restrictions: For Research Use only

Handling

Format: Liquid

Concentration: 1 µg/µL

Buffer: 0.01M TBS(pH 7.4) with 1 % BSA, 0.02 % Proclin300 and 50 % Glycerol.

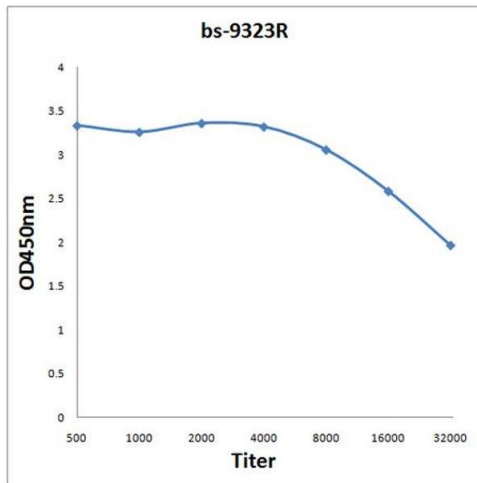
Preservative: ProClin

Precaution of Use: This product contains ProClin: a POISONOUS AND HAZARDOUS SUBSTANCE, which should be handled by trained staff only.

Storage: 4 °C,-20 °C

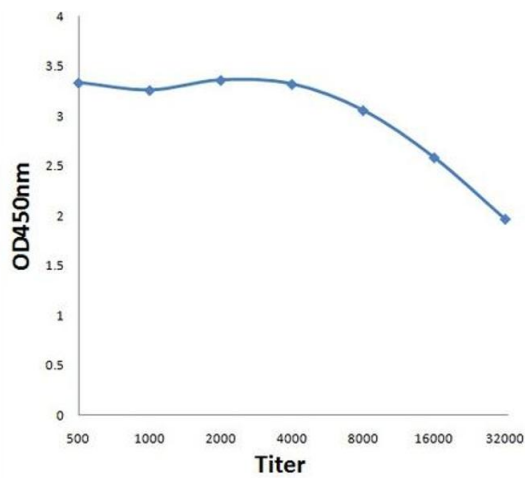
Storage Comment: Shipped at 4°C. Store at -20°C for one year. Avoid repeated freeze/thaw cycles.

Expiry Date: 12 months



ELISA

Image 1. Antigen: 2 µg/100 µL Primary: Antiserum, 1:500, 1:1000, 1:2000, 1:4000, 1:8000, 1:16000, 1:32000; Secondary: HRP conjugated Rabbit Anti-Goat IgG at 1: 5000; TMB staining Read the data in Microplate Reader by 450nm.



ELISA

Image 2. Antigen: 0.2ug/100ul, Primary: Antiserum, 1:500, 1:1000, 1:2000, 1:4000, 1:8000, 1:16000, 1:32000, Secondary: HRP conjugated Goat-Anti-Rabbit IgG at 1: 5000, TMB staining, Read the data in MicroplateReader by 450nm