

Datasheet for ABIN1385782
anti-C6orf192 antibody (AA 50-80)

3 Images

[Go to Product page](#)

Overview

Quantity:	100 µL
Target:	C6orf192
Binding Specificity:	AA 50-80
Reactivity:	Human, Mouse, Rat
Host:	Rabbit
Clonality:	Polyclonal
Conjugate:	This C6orf192 antibody is un-conjugated
Application:	Immunofluorescence (Paraffin-embedded Sections) (IF (p)), Western Blotting (WB), Immunohistochemistry (Paraffin-embedded Sections) (IHC (p))

Product Details

Immunogen:	KLH conjugated synthetic peptide derived from human C6orf192
Isotype:	IgG
Cross-Reactivity:	Human, Mouse, Rat
Purification:	Purified by Protein A.

Target Details

Target:	C6orf192
Alternative Name:	C6orf192 (C6orf192 Products)
Background:	Synonyms: C6orf192, dJ55C23.6, MFS-type transporter SLC18B1, Solute carrier family 18

Target Details

member B1, SLC18B1

Background: Making up nearly 6 % of the human genome, chromosome 6 contains around 1,200 genes within 170 million base pairs of sequence. Deletion of a portion of the q arm of chromosome 6 is associated with early onset intestinal cancer suggesting the presence of a cancer susceptibility locus. Porphyria cutanea tarda is associated with chromosome 6 through the HFE gene which, when mutated, predisposes an individual to developing this porphyria. Notably, the PARK2 gene, which is associated with Parkinson's disease, and the genes encoding the major histocompatibility complex proteins, which are key molecular components of the immune system and determine predisposition to rheumatic diseases, are also located on chromosome 6. Stickler syndrome, 21-hydroxylase deficiency and maple syrup urine disease are also associated with genes on chromosome 6. A bipolar disorder susceptibility locus has been identified on the q arm of chromosome 6. The C6orf192 gene product has been provisionally designated C6orf192 pending further characterization.

Gene ID: 116843

UniProt: [Q6NT16](#)

Application Details

Application Notes: WB 1:300-5000
IHC-P 1:200-400
IF(IHC-P) 1:50-200

Restrictions: For Research Use only

Handling

Format: Liquid

Concentration: 1 µg/µL

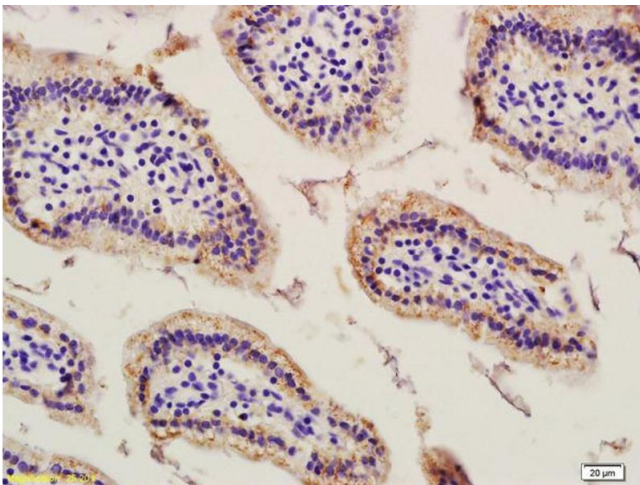
Buffer: 0.01M TBS(pH 7.4) with 1 % BSA, 0.02 % Proclin300 and 50 % Glycerol.

Preservative: ProClin

Precaution of Use: This product contains ProClin: a POISONOUS AND HAZARDOUS SUBSTANCE, which should be handled by trained staff only.

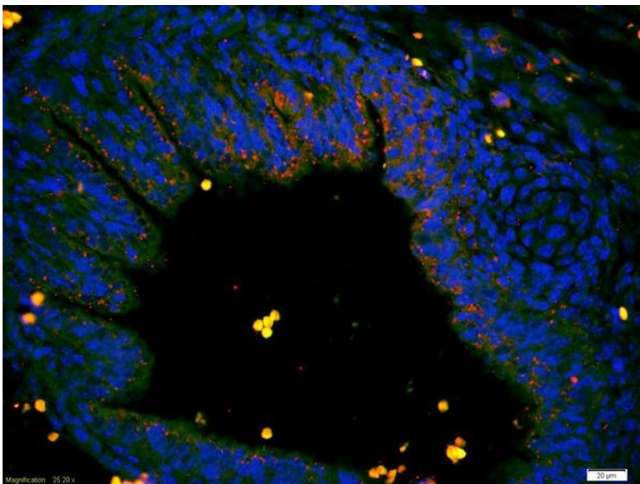
Storage: 4 °C,-20 °C

Storage Comment: Shipped at 4°C. Store at -20°C for one year. Avoid repeated freeze/thaw cycles.



Immunohistochemistry

Image 1. Formalin-fixed and paraffin embedded mouse intestine labeled with Anti-C6orf192 Polyclonal Antibody, Unconjugated (ABIN1385782) at 1:200 followed by conjugation to the secondary antibody and DAB staining



Immunofluorescence

Image 2. Formalin-fixed and paraffin-embedded intestine of mouse embryo labeled with Anti-C6orf192 Polyclonal Antibody, Unconjugated (ABIN1385782) 1:200, overnight at 4°C, The secondary antibody was Goat Anti-Rabbit IgG, Cy3 conjugated used at 1:200 dilution for 40 minutes at 37°C.

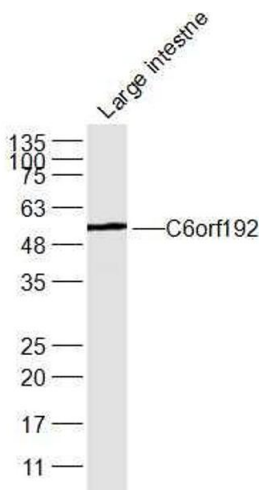


Image 3. Mouse Large intestine lysates probed with C6orf192 Polyclonal Antibody, Unconjugated at 1:300 dilution and 4°C overnight incubation. Followed by conjugated secondary antibody incubation at 1:10000 for 60 min at 37°C.