



[Go to Product page](#)

Datasheet for ABIN1385792
anti-GOLGA7B antibody

1 Image

Overview

Quantity:	100 µL
Target:	GOLGA7B
Reactivity:	Human, Mouse, Rat
Host:	Rabbit
Clonality:	Polyclonal
Conjugate:	This GOLGA7B antibody is un-conjugated
Application:	Western Blotting (WB), Immunofluorescence (Paraffin-embedded Sections) (IF (p)), Immunohistochemistry (Paraffin-embedded Sections) (IHC (p))

Product Details

Immunogen:	KLH conjugated synthetic peptide derived from human C10orf132
Isotype:	IgG
Cross-Reactivity:	Human, Mouse, Rat
Purification:	Purified by Protein A.

Target Details

Target:	GOLGA7B
Alternative Name:	C10orf132 (GOLGA7B Products)
Background:	Synonyms: C10orf133, Chromosome 10 open reading frame 132, GOLGA7B, Golgi autoantigen golgin subfamily a 7B, golgin subfamily A member 7B, MGC131701, Uncharacterized protein C10orf132, GOG7B_HUMAN.

Target Details

Background: GOLGA7B , also known as C10orf132 or C10orf133, is a 167 amino acid lipid anchor protein belonging to the Erf4 family. Localizing to Golgi apparatus membrane, GOLGA7B may be involved in the transport of proteins from Golgi to cell surface. The gene encoding GOLGA7B maps to human chromosome 10q24.2 and mouse chromosome 19 C3. Spanning nearly 135 million base pairs, chromosome 10 makes up approximately 4.5 % of total DNA in cells and encodes nearly 1,200 genes. Several protein-coding genes, including those that encode for chemokines, cadherins, excision repair proteins, early growth response factors (Egrs) and fibroblast growth receptors (FGFRs), are located on chromosome 10. Defects in some of the genes that map to chromosome 10 are associated with Charcot-Marie Tooth disease, Jackson-Weiss syndrome, Usher syndrome and Wolman's syndrome.

Gene ID: 401647

Application Details

Application Notes: WB 1:300-5000
IHC-P 1:200-400
IF(IHC-P) 1:50-200

Restrictions: For Research Use only

Handling

Format: Liquid

Concentration: 1 µg/µL

Buffer: 0.01M TBS(pH 7.4) with 1 % BSA, 0.02 % Proclin300 and 50 % Glycerol.

Preservative: ProClin

Precaution of Use: This product contains ProClin: a POISONOUS AND HAZARDOUS SUBSTANCE, which should be handled by trained staff only.

Storage: 4 °C, -20 °C

Storage Comment: Shipped at 4°C. Store at -20°C for one year. Avoid repeated freeze/thaw cycles.

Expiry Date: 12 months

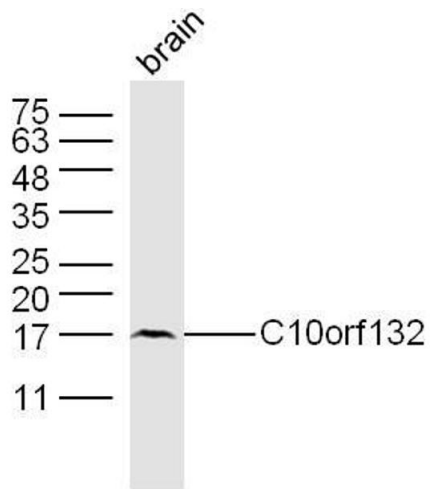


Image 1. Mouse brain lysates probed with C10orf132 Polyclonal Antibody, Unconjugated at 1:300 dilution and 4°C overnight incubation. Followed by conjugated secondary antibody incubation at 1:10000 for 60 min at 37°C.