

Datasheet for ABIN1385805
anti-TBP antibody (AA 201-339)



[Go to Product page](#)

1 Image

Overview

Quantity:	100 µL
Target:	TBP
Binding Specificity:	AA 201-339
Reactivity:	Human, Mouse, Rat
Host:	Rabbit
Clonality:	Polyclonal
Conjugate:	This TBP antibody is un-conjugated
Application:	Western Blotting (WB), ELISA, Immunohistochemistry (Paraffin-embedded Sections) (IHC (p)), Immunocytochemistry (ICC), Immunofluorescence (Cultured Cells) (IF (cc)), Immunofluorescence (Paraffin-embedded Sections) (IF (p)), Immunohistochemistry (Frozen Sections) (IHC (fro))

Product Details

Immunogen:	KLH conjugated synthetic peptide derived from human TATA binding protein TBP
Isotype:	IgG
Cross-Reactivity:	Human, Mouse, Rat
Predicted Reactivity:	Dog,Cow,Pig,Horse,Chicken,Rabbit
Purification:	Purified by Protein A.

Target Details

Target:	TBP
---------	-----

Target Details

Alternative Name:	TFIID/TATA binding protein TBP (TBP Products)
Background:	<p>Synonyms: GTF2D, GTF2D1, MGC117320, MGC126054, MGC126055, SCA 17, SCA17, TATA binding factor, TATA box binding protein, TATA box factor, TATA sequence binding protein, TATA sequence-binding protein, TATA-binding factor, TATA-box factor, TATA-box-binding protein, TBP, TBP_HUMAN, TF2D, TFIID, Transcription initiation factor TFIID TBP subunit.</p> <p>Background: In eukaryotic systems, initiation of transcription from protein-coding genes is a complex process requiring RNA polymerase II and broad families of auxiliary transcription factors. Such factors can be divided into two major functional classes: the basal factors that are required for transcription of all Pol II genes, including TFIIA, TFIIB, TFIID, TFIIE, TFIIF and TFIIH, and sequence-specific factors that regulate gene expression. The basal transcription factors and Pol II form a specific multiprotein complex near the transcription start site by interacting with core promotor elements such as the TATA box generally located 25-30 base pairs upstream of the transcription start site. Binding of TFIID to the TATA element initiates assembly of the other factors into a pre-initiation complex. The TATA-binding subunit of TFIID (designated TFIIDt or TBP) from higher eukaryotes contains a highly conserved 180 amino acid C-terminal domain.</p>
Pathways:	WNT Signaling

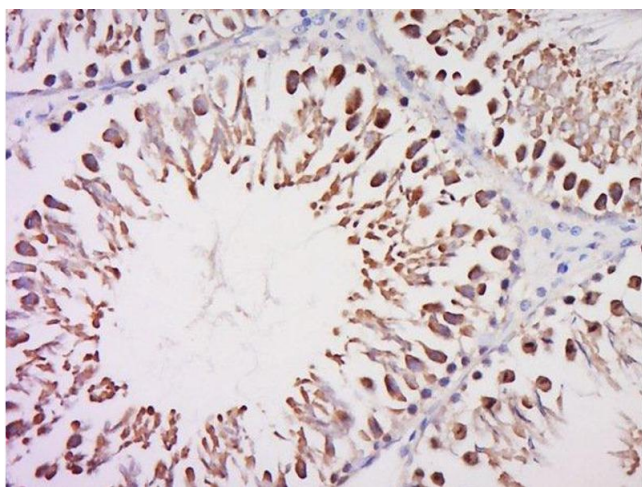
Application Details

Application Notes:	WB 1:300-5000 ELISA 1:500-1000 IHC-P 1:200-400 IHC-F 1:100-500 IF(IHC-P) 1:50-200 IF(IHC-F) 1:50-200 IF(ICC) 1:50-200 ICC 1:100-500
Restrictions:	For Research Use only
Handling	
Format:	Liquid
Concentration:	1 µg/µL
Buffer:	0.01M TBS(pH 7.4) with 1 % BSA, 0.02 % Proclin300 and 50 % Glycerol.

Handling

Preservative:	ProClin
Precaution of Use:	This product contains ProClin: a POISONOUS AND HAZARDOUS SUBSTANCE, which should be handled by trained staff only.
Storage:	4 °C,-20 °C
Storage Comment:	Shipped at 4°C. Store at -20°C for one year. Avoid repeated freeze/thaw cycles.
Expiry Date:	12 months

Images



Immunohistochemistry (Paraffin-embedded Sections)

Image 1. Paraformaldehyde-fixed, paraffin embedded rat testis, Antigen retrieval by boiling in sodium citrate buffer (pH6) for 15min, Block endogenous peroxidase by 3% hydrogen peroxide for 30 minutes, Blocking buffer (normal goat serum) at 37°C for 20min, Antibody incubation with Rabbit Anti-TFIID/TATA binding protein TBP Polyclonal Antibody, Unconjugated at 1:200 overnight at 4°C, followed by a conjugated secondary for 90 minutes and DAB staining.