

Datasheet for ABIN1385823  
**anti-KLC1 antibody (AA 1-100)**[Go to Product page](#)

## 2 Images

## Overview

Quantity:	100 µL
Target:	KLC1
Binding Specificity:	AA 1-100
Reactivity:	Human, Rat, Mouse
Host:	Rabbit
Clonality:	Polyclonal
Conjugate:	This KLC1 antibody is un-conjugated
Application:	Western Blotting (WB), ELISA, Immunofluorescence (Cultured Cells) (IF (cc)), Immunofluorescence (Paraffin-embedded Sections) (IF (p)), Immunocytochemistry (ICC), Immunohistochemistry (Paraffin-embedded Sections) (IHC (p)), Immunohistochemistry (Frozen Sections) (IHC (fro))

## Product Details

Immunogen:	KLH conjugated synthetic peptide derived from human KLC1
Isotype:	IgG
Cross-Reactivity:	Human, Mouse, Rat
Predicted Reactivity:	Cow, Sheep, Horse, Chicken, Rabbit
Purification:	Purified by Protein A.

## Target Details

Target:	KLC1
---------	------

## Target Details

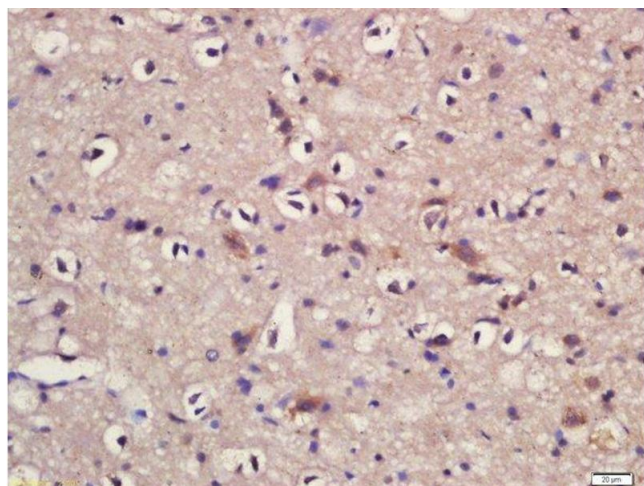
Alternative Name:	KLC1/KNS2 ( <a href="#">KLC1 Products</a> )
Background:	Synonyms: KLC, KNS2, KNS2A, Kinesin light chain 1, KLC 1, KLC1 Background: Kinesin is a microtubule-associated force-producing protein that may play a role in organelle transport. The light chain may function in coupling of cargo to the heavy chain or in the modulation of its ATPase activity.
Gene ID:	3831
UniProt:	<a href="#">Q07866</a>
Pathways:	<a href="#">Ribonucleoprotein Complex Subunit Organization</a>

## Application Details

Application Notes:	WB 1:300-5000 ELISA 1:500-1000 IHC-P 1:200-400 IHC-F 1:100-500 IF(IHC-P) 1:50-200 IF(IHC-F) 1:50-200 IF(ICC) 1:50-200 ICC 1:100-500
Restrictions:	For Research Use only

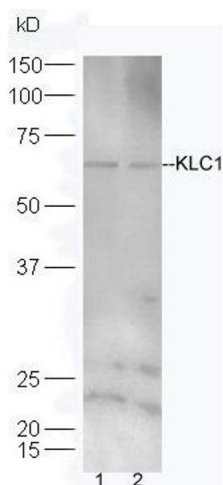
## Handling

Format:	Liquid
Concentration:	1 µg/µL
Buffer:	0.01M TBS( pH 7.4) with 1 % BSA, 0.02 % Proclin300 and 50 % Glycerol.
Preservative:	ProClin
Precaution of Use:	This product contains ProClin: a POISONOUS AND HAZARDOUS SUBSTANCE, which should be handled by trained staff only.
Storage:	4 °C, -20 °C
Storage Comment:	Shipped at 4°C. Store at -20°C for one year. Avoid repeated freeze/thaw cycles.
Expiry Date:	12 months



#### Immunohistochemistry (Paraffin-embedded Sections)

**Image 1.** Formalin-fixed and paraffin embedded rat brain labeled with Rabbit Anti-KLC1/KNS2 Polyclonal Antibody, Unconjugated (ABIN1385823) at 1:200 followed by conjugation to the secondary antibody and DAB staining



#### Western Blotting

**Image 2.** Lane 1: HeLa lysates Lane 2: 293T lysates probed with Rabbit Anti-KLC1/KNS2 Polyclonal Antibody, Unconjugated (ABIN1385823) at 1:300 overnight at 4 °C. Followed by conjugation to secondary antibody at 1:5000 for 90 min at 37 °C.