

Datasheet for ABIN1385836
anti-UBE2J2 antibody (AA 1-100)[Go to Product page](#)

1 Image

Overview

Quantity:	100 µL
Target:	UBE2J2
Binding Specificity:	AA 1-100
Reactivity:	Human
Host:	Rabbit
Clonality:	Polyclonal
Conjugate:	This UBE2J2 antibody is un-conjugated
Application:	Western Blotting (WB), ELISA, Immunofluorescence (Cultured Cells) (IF (cc)), Immunofluorescence (Paraffin-embedded Sections) (IF (p)), Immunohistochemistry (Paraffin- embedded Sections) (IHC (p)), Immunohistochemistry (Frozen Sections) (IHC (fro))

Product Details

Immunogen:	KLH conjugated synthetic peptide derived from human UBE2J2
Isotype:	IgG
Cross-Reactivity:	Human
Predicted Reactivity:	Mouse,Rat,Dog,Cow,Sheep,Pig,Horse,Chicken,Rabbit
Purification:	Purified by Protein A.

Target Details

Target:	UBE2J2
---------	--------

Target Details

Alternative Name:	UBE2J2 (UBE2J2 Products)
Background:	<p>Synonyms: NCUBE-2, NCUBE2, Non-canonical ubiquitin-conjugating enzyme 2, UB2J2_HUMAN, UBC6, UBC6 homolog, ube2j2, Ubiquitin-conjugating enzyme E2 J2.</p> <p>Background: Ubiquitination is an important molecular mechanism by which abnormal or short-lived proteins are targeted for degradation by the concerted efforts of at least three classes of enzymes: ubiquitin-activating enzymes (E1s), ubiquitin-conjugating enzymes (E2s) and ubiquitin-protein ligases (E3s). UBE2J2 (Ubiquitin-conjugating enzyme E2 J2), also known as NCUBE2 (Non-canonical ubiquitin-conjugating enzyme 2), is a 259 amino acid single pass type IV membrane protein that belongs to the E2 ubiquitin-conjugating enzyme family and is involved in protein degradation. Localized to the membrane of the endoplasmic reticulum (ER), UBE2J2 catalyzes the attachment of ubiquitin to misfolded membrane proteins, thereby targeting them for proteasomal destruction. This ATP-dependent reaction yields AMP, a diphosphate and a ubiquitin-tagged protein and may be a method of quality control within the ER. Two isoforms of UBE2J2 exist due to alternative splicing events.</p>
Gene ID:	118424

Application Details

Application Notes:	WB 1:300-5000 ELISA 1:500-1000 IHC-P 1:200-400 IHC-F 1:100-500 IF(IHC-P) 1:50-200 IF(IHC-F) 1:50-200 IF(ICC) 1:50-200
Restrictions:	For Research Use only

Handling

Format:	Liquid
Concentration:	1 µg/µL
Buffer:	0.01M TBS(pH 7.4) with 1 % BSA, 0.02 % Proclin300 and 50 % Glycerol.
Preservative:	ProClin
Precaution of Use:	This product contains ProClin: a POISONOUS AND HAZARDOUS SUBSTANCE, which should be

Handling

	handled by trained staff only.
Storage:	4 °C,-20 °C
Storage Comment:	Shipped at 4°C. Store at -20°C for one year. Avoid repeated freeze/thaw cycles.
Expiry Date:	12 months

Images

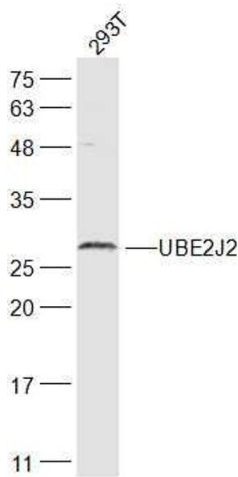


Image 1. 293T lysates probed with UBE2J2 Polyclonal Antibody, Unconjugated at 1:300 dilution and 4°C overnight incubation. Followed by conjugated secondary antibody incubation at 1:10000 for 60 min at 37°C.