



[Go to Product page](#)

Datasheet for ABIN1385843
anti-WFS1 antibody (AA 791-890)

1 Image

Overview

Quantity:	100 µL
Target:	WFS1
Binding Specificity:	AA 791-890
Reactivity:	Human
Host:	Rabbit
Clonality:	Polyclonal
Conjugate:	This WFS1 antibody is un-conjugated
Application:	Western Blotting (WB), ELISA, Immunofluorescence (Cultured Cells) (IF (cc)), Immunofluorescence (Paraffin-embedded Sections) (IF (p)), Immunohistochemistry (Paraffin- embedded Sections) (IHC (p)), Immunohistochemistry (Frozen Sections) (IHC (fro)), Immunocytochemistry (ICC)

Product Details

Immunogen:	KLH conjugated synthetic peptide derived from human WFS1
Isotype:	IgG
Cross-Reactivity:	Human
Predicted Reactivity:	Mouse,Rat,Dog,Cow,Horse
Purification:	Purified by Protein A.

Target Details

Target:	WFS1
---------	------

Target Details

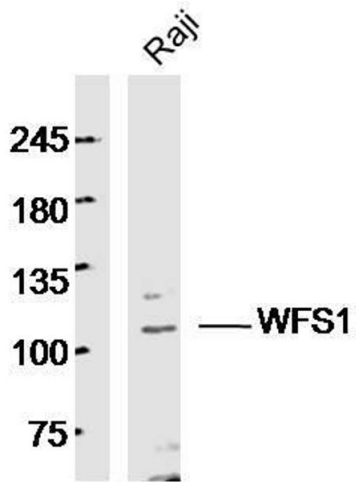
Alternative Name:	WFS1 (WFS1 Products)
Background:	Synonyms: WFS, WFRS, WFSL, CTRCT41, Wolframin, WFS1 Background: Participates in the regulation of cellular Ca(2+) homeostasis, at least partly, by modulating the filling state of the endoplasmic reticulum Ca(2+) store.
Gene ID:	7466
UniProt:	O76024
Pathways:	Sensory Perception of Sound , Carbohydrate Homeostasis , ER-Nucleus Signaling , Negative Regulation of intrinsic apoptotic Signaling , SARS-CoV-2 Protein Interactome

Application Details

Application Notes:	WB 1:300-5000 ELISA 1:500-1000 IHC-P 1:200-400 IHC-F 1:100-500 IF(IHC-P) 1:50-200 IF(IHC-F) 1:50-200 IF(ICC) 1:50-200 ICC 1:100-500
Restrictions:	For Research Use only

Handling

Format:	Liquid
Concentration:	1 µg/µL
Buffer:	0.01M TBS(pH 7.4) with 1 % BSA, 0.02 % Proclin300 and 50 % Glycerol.
Preservative:	ProClin
Precaution of Use:	This product contains ProClin: a POISONOUS AND HAZARDOUS SUBSTANCE, which should be handled by trained staff only.
Storage:	4 °C, -20 °C
Storage Comment:	Shipped at 4°C. Store at -20°C for one year. Avoid repeated freeze/thaw cycles.
Expiry Date:	12 months



Western Blotting

Image 1. Human Raji cells probed with WFS1 Polyclonal Antibody, unconjugated at 1:300 overnight at 4°C followed by a conjugated secondary antibody at 1:10000 for 90 minutes at 37°C.