

Datasheet for ABIN1385899
anti-PET112L antibody (AA 101-200)[Go to Product page](#)

2 Images

Overview

Quantity:	100 µL
Target:	PET112L (PET112)
Binding Specificity:	AA 101-200
Reactivity:	Mouse
Host:	Rabbit
Clonality:	Polyclonal
Conjugate:	This PET112L antibody is un-conjugated
Application:	Western Blotting (WB), ELISA, Immunofluorescence (Cultured Cells) (IF (cc)), Immunofluorescence (Paraffin-embedded Sections) (IF (p)), Immunohistochemistry (Frozen Sections) (IHC (fro)), Immunohistochemistry (Paraffin-embedded Sections) (IHC (p)), Immunocytochemistry (ICC)

Product Details

Immunogen:	KLH conjugated synthetic peptide derived from human PET112L
Isotype:	IgG
Cross-Reactivity:	Mouse
Predicted Reactivity:	Human,Rat,Dog,Cow
Purification:	Purified by Protein A.

Target Details

Target:	PET112L (PET112)
---------	------------------

Target Details

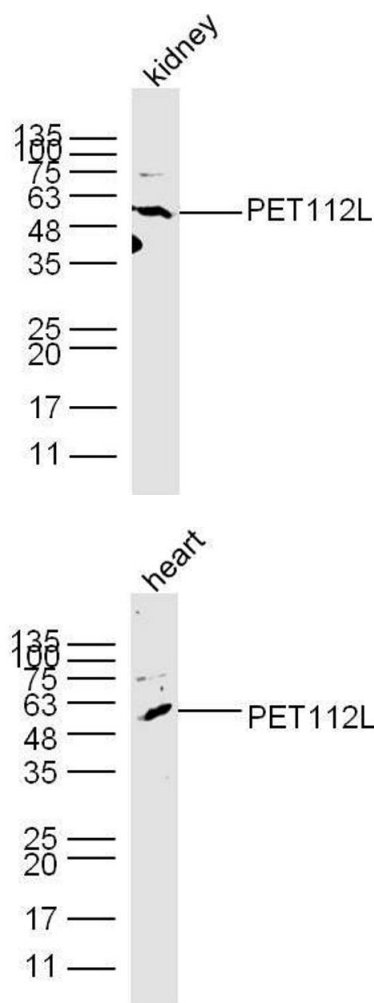
Alternative Name:	PET112L (PET112 Products)
Background:	<p>Synonyms: Cytochrome oxidase assembly factor PET112 homolog, GATB_HUMAN, GLU-ADT subunit B, HSPC199, mitochondrial, PET112, PET112 homolog yeast, PET112-like, Probable glutamyl-tRNA^{Gln} amidotransferase subunit B.</p> <p>Background: PET112L is the human homolog of the <i>S. cerevisiae</i> COX assembly protein pet112, a protein that is believed to play an important role in the translation of mitochondrial genes. PET112L, also known as HSPC199 or Glu-ADT subunit B (glutamyl-tRNA(Gln) amidotransferase subunit B), is a 557 amino acid protein belonging to the gatB/gatE family of proteins (GatB subfamily) and is believed to play a role in energy metabolism. Localizing to mitochondria, PET112L is expressed in tissues such as heart and muscle, which exhibit high rates of oxidative phosphorylation. The gene encoding PET112L is overexpressed in recurrent ependymoma.</p>

Application Details

Application Notes:	WB 1:300-5000 ELISA 1:500-1000 IHC-P 1:200-400 IHC-F 1:100-500 IF(IHC-P) 1:50-200 IF(IHC-F) 1:50-200 IF(ICC) 1:50-200 ICC 1:100-500
Restrictions:	For Research Use only

Handling

Format:	Liquid
Concentration:	1 µg/µL
Buffer:	0.01M TBS(pH 7.4) with 1 % BSA, 0.02 % Proclin300 and 50 % Glycerol.
Preservative:	ProClin
Precaution of Use:	This product contains ProClin: a POISONOUS AND HAZARDOUS SUBSTANCE, which should be handled by trained staff only.
Storage:	4 °C,-20 °C
Storage Comment:	Shipped at 4°C. Store at -20°C for one year. Avoid repeated freeze/thaw cycles.



Western Blotting

Image 1. Mouse kidney lysates probed with PET112L Polyclonal Antibody, unconjugated at 1:300 overnight at 4°C followed by a conjugated secondary antibody at 1:10000 for 60 minutes at 37°C.

Western Blotting

Image 2. Mouse heart lysates probed with PET112L Polyclonal Antibody, unconjugated at 1:300 overnight at 4°C followed by a conjugated secondary antibody at 1:10000 for 60 minutes at 37°C.