



Datasheet for ABIN1385912
anti-Endomucin antibody (AA 21-120)



[Go to Product page](#)

2 Images

Overview

Quantity:	100 µL
Target:	Endomucin (EMCN)
Binding Specificity:	AA 21-120
Reactivity:	Human, Mouse
Host:	Rabbit
Clonality:	Polyclonal
Conjugate:	This Endomucin antibody is un-conjugated
Application:	Immunofluorescence (Cultured Cells) (IF (cc)), Immunofluorescence (Paraffin-embedded Sections) (IF (p)), ELISA, Immunohistochemistry (Frozen Sections) (IHC (fro))

Product Details

Immunogen:	KLH conjugated synthetic peptide derived from human Endomucin
Isotype:	IgG
Cross-Reactivity:	Human, Mouse
Purification:	Purified by Protein A.

Target Details

Target:	Endomucin (EMCN)
Alternative Name:	Endomucin (EMCN Products)
Background:	Synonyms: EMCN2, MUC14, Endomucin, Endomucin-2, Gastric cancer antigen Ga34, Mucin-14,

Target Details

MUC-14, EMCN

Background: Endothelial sialomucin, also called endomucin or mucin-like sialoglycoprotein, which interferes with the assembly of focal adhesion complexes and inhibits interaction between cells and the extracellular matrix.

Gene ID: 51705

UniProt: [Q9ULC0](#)

Application Details

Application Notes: ELISA 1:500-1000
IHC-P 1:200-400
IHC-F 1:100-500
IF(IHC-P) 1:50-200
IF(IHC-F) 1:50-200
IF(ICC) 1:50-200

Restrictions: For Research Use only

Handling

Format: Liquid

Concentration: 1 µg/µL

Buffer: 0.01M TBS(pH 7.4) with 1 % BSA, 0.02 % Proclin300 and 50 % Glycerol.

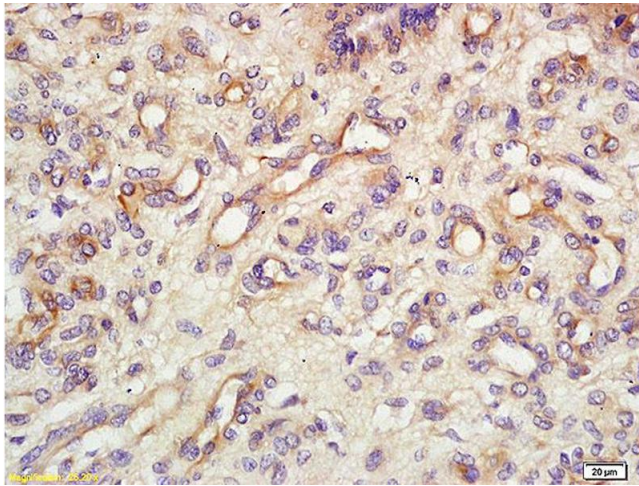
Preservative: ProClin

Precaution of Use: This product contains ProClin: a POISONOUS AND HAZARDOUS SUBSTANCE, which should be handled by trained staff only.

Storage: 4 °C,-20 °C

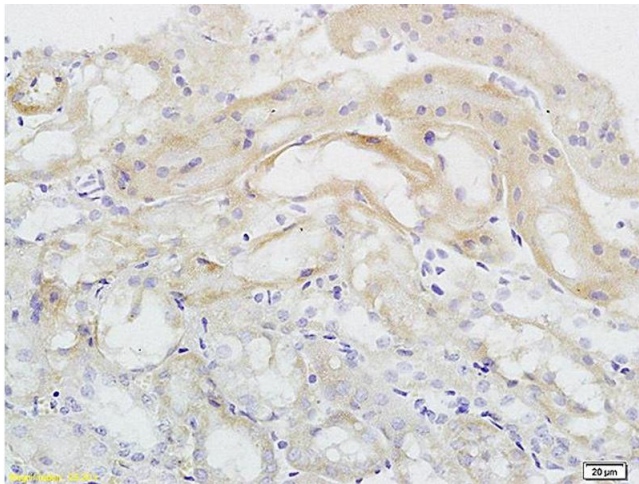
Storage Comment: Shipped at 4°C. Store at -20°C for one year. Avoid repeated freeze/thaw cycles.

Expiry Date: 12 months



Immunohistochemistry

Image 1. Formalin-fixed and paraffin embedded mouse tumor tissue labeled with Anti Endomucin Polyclonal Antibody, Unconjugated (ABIN1385912) at 1:200 followed by conjugation to the secondary antibody and DAB staining



Immunohistochemistry

Image 2. Formalin-fixed and paraffin embedded rat kidney labeled with Anti Endomucin Polyclonal Antibody, Unconjugated (ABIN1385912) at 1:200 followed by conjugation to the secondary antibody and DAB staining