



[Go to Product page](#)

Datasheet for ABIN1385925  
**anti-NLRX1 antibody (AA 111-210)**

2 Images

Overview

Quantity:	100 µL
Target:	NLRX1
Binding Specificity:	AA 111-210
Reactivity:	Human
Host:	Rabbit
Clonality:	Polyclonal
Conjugate:	This NLRX1 antibody is un-conjugated
Application:	Western Blotting (WB), ELISA, Immunofluorescence (Cultured Cells) (IF (cc)), Immunofluorescence (Paraffin-embedded Sections) (IF (p)), Immunohistochemistry (Paraffin-embedded Sections) (IHC (p)), Immunohistochemistry (Frozen Sections) (IHC (fro))

Product Details

Immunogen:	KLH conjugated synthetic peptide derived from human NLR family member X1
Isotype:	IgG
Predicted Reactivity:	Human,Mouse,Rat,Dog,Cow,Sheep,Pig,Horse
Purification:	Purified by Protein A.

Target Details

Target:	NLRX1
Alternative Name:	NLRX1 ( <a href="#">NLRX1 Products</a> )

## Target Details

---

Background: Synonyms: NOD5, NOD9, NOD26, DLNB26, CLR11.3, NLR family member X1, Caterpillar protein 11.3, Nucleotide-binding oligomerization domain protein 26, Nucleotide-binding oligomerization domain protein 5, Nucleotide-binding oligomerization domain protein 9, NLRX1

Background: Participates in antiviral signaling. Acts as a negative regulator of MAVS-mediated antiviral responses, through the inhibition of the virus-induced RLH (RIG-like helicase)-MAVS interaction (PubMed:18200010). Has no inhibitory function on NF-Kappa-B and type 1 interferon signaling pathways, but enhances NF-Kappa-B and JUN N-terminal kinase dependent signaling through the production of reactive oxygen species (PubMed:18219313).

Gene ID: 79671

UniProt: [Q86UT6](#)

Pathways: [SARS-CoV-2 Protein Interactome](#)

## Application Details

---

Application Notes: WB 1:300-5000  
ELISA 1:500-1000  
IHC-P 1:200-400  
IHC-F 1:100-500  
IF(IHC-P) 1:50-200  
IF(IHC-F) 1:50-200  
IF(ICC) 1:50-200

Restrictions: For Research Use only

## Handling

---

Format: Liquid

Concentration: 1 µg/µL

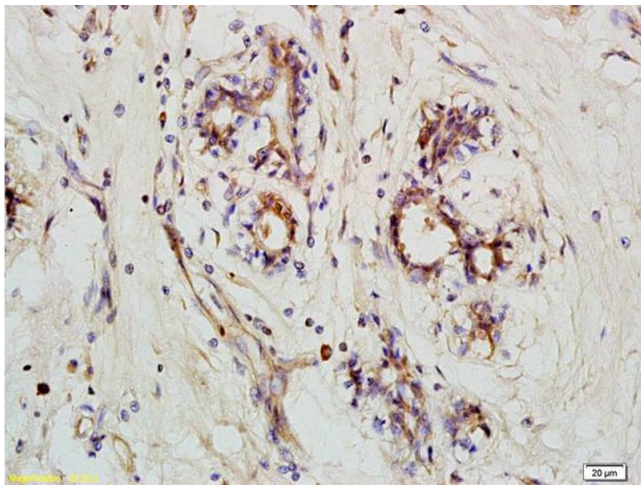
Buffer: 0.01M TBS( pH 7.4) with 1 % BSA, 0.02 % Proclin300 and 50 % Glycerol.

Preservative: ProClin

Precaution of Use: This product contains ProClin: a POISONOUS AND HAZARDOUS SUBSTANCE, which should be handled by trained staff only.

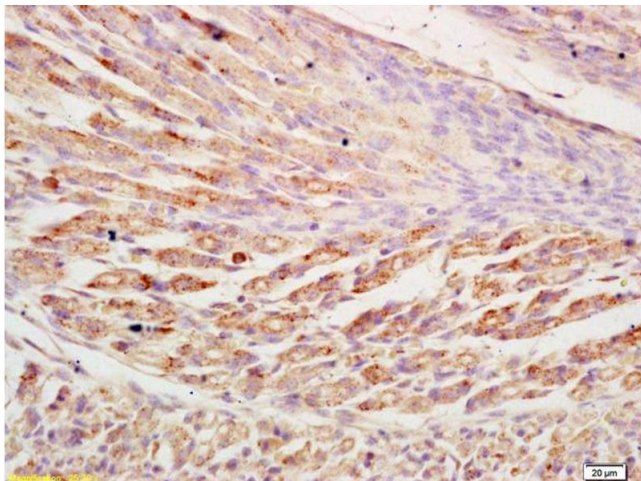
Storage: 4 °C,-20 °C

Storage Comment: Shipped at 4°C. Store at -20°C for one year. Avoid repeated freeze/thaw cycles.



#### Immunohistochemistry

**Image 1.** Formalin-fixed and paraffin embedded human breast carcinoma labeled with Anti-NLRX1 Polyclonal Antibody, Unconjugated (ABIN1385925) at 1:200 followed by conjugation to the secondary antibody and DAB staining



#### Immunohistochemistry

**Image 2.** Formalin-fixed and paraffin embedded mouse embryonic muscle labeled with Anti-NLRX1 Polyclonal Antibody, Unconjugated (ABIN1385925) at 1:200 followed by conjugation to the secondary antibody and DAB staining