

Datasheet for ABIN1385976
anti-UBE2D2 antibody (AA 31-130)

2 Images

[Go to Product page](#)

Overview

Quantity:	100 µL
Target:	UBE2D2
Binding Specificity:	AA 31-130
Reactivity:	Human, Mouse
Host:	Rabbit
Clonality:	Polyclonal
Conjugate:	This UBE2D2 antibody is un-conjugated
Application:	Western Blotting (WB), ELISA, Immunofluorescence (Cultured Cells) (IF (cc)), Immunofluorescence (Paraffin-embedded Sections) (IF (p)), Immunohistochemistry (Paraffin-embedded Sections) (IHC (p)), Immunohistochemistry (Frozen Sections) (IHC (fro))

Product Details

Immunogen:	KLH conjugated synthetic peptide derived from human UBE2D2
Isotype:	IgG
Cross-Reactivity:	Human, Mouse
Predicted Reactivity:	Rat,Cow,Sheep,Horse,Chicken,Rabbit
Purification:	Purified by Protein A.

Target Details

Target:	UBE2D2
---------	--------

Target Details

Alternative Name:	UBE2D2 (UBE2D2 Products)
Background:	<p>Synonyms: PUBC 1, PUBC1, UB2D2_HUMAN, UBC 4, UBC 4/5, UBC4, UBC4/5, UBC4/5 homolog yeast, UBCH 5B, UBCH5B, UBE2D2, Ubiquitin carrier protein, Ubiquitin carrier protein D2, Ubiquitin conjugating enzyme E2 17 kDa 2, Ubiquitin conjugating enzyme E2 D2, Ubiquitin conjugating enzyme E2D 2 homologous to yeast UBC4/5, Ubiquitin conjugating enzyme E2D 2 UBC4/5 homolog yeast, Ubiquitin conjugating enzyme E2D 2, Ubiquitin protein ligase D2, Ubiquitin-conjugating enzyme E2 D2, Ubiquitin-conjugating enzyme E217KB 2, Ubiquitin-conjugating enzyme E2-17 kDa 2, Ubiquitin-protein ligase D2, E217KB2.</p> <p>Background: Ubiquitin is an abundant, highly conserved protein found in all eukaryotic cells either free or covalently attached to cellular proteins. The primary function of ubiquitin in mammalian systems is to clear abnormal, foreign, and improperly folded proteins by targeting them for proteasome degradation. UBE2D proteins, including UBE2D1 (ubiquitin-conjugating enzyme E2D1 or UBC5A), UBE2D2 (ubiquitin-conjugating enzyme E2D2 or UBC5B) and UBE2D3 (ubiquitin-conjugating enzyme E2D3 or UBC5C), are E2 ubiquitin-conjugating enzymes that catalyze the ubiquitination of I^κBα in a phosphorylation and SCFB-TRCP-dependent manner. Specifically, E1 first transfers a ubiquitin residue to the E2 component (a UBE2D protein), and the UBE2D protein then associates with an E3 ubiquitin-protein ligase, which immediately transfers that residue to a protein that is targeted for degradation.</p>
Gene ID:	7322
Pathways:	Activation of Innate immune Response , Toll-Like Receptors Cascades

Application Details

Application Notes:	WB 1:300-5000 ELISA 1:500-1000 IHC-P 1:200-400 IHC-F 1:100-500 IF(IHC-P) 1:50-200 IF(IHC-F) 1:50-200 IF(ICC) 1:50-200
Restrictions:	For Research Use only

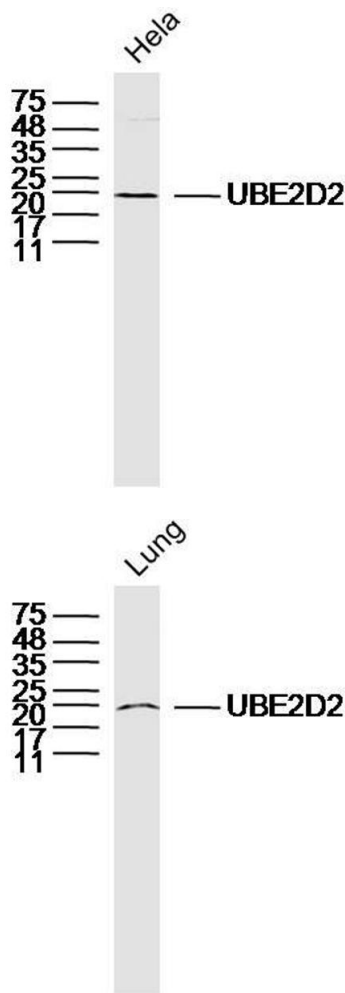
Handling

Format:	Liquid
---------	--------

Handling

Concentration:	1 µg/µL
Buffer:	0.01M TBS(pH 7.4) with 1 % BSA, 0.02 % Proclin300 and 50 % Glycerol.
Preservative:	ProClin
Precaution of Use:	This product contains ProClin: a POISONOUS AND HAZARDOUS SUBSTANCE, which should be handled by trained staff only.
Storage:	4 °C,-20 °C
Storage Comment:	Shipped at 4°C. Store at -20°C for one year. Avoid repeated freeze/thaw cycles.
Expiry Date:	12 months

Images



Western Blotting

Image 1. HeLa lysates probed with UBE2D2 Polyclonal Antibody, Unconjugated at 1:300 dilution and 4°C overnight incubation. Followed by conjugated secondary antibody incubation at 1:10000 for 60 min at 37°C.

Western Blotting

Image 2. Mouse lung lysates probed with UBE2D2 Polyclonal Antibody, Unconjugated at 1:300 dilution and 4°C overnight incubation. Followed by conjugated secondary antibody incubation at 1:10000 for 60 min at 37°C.