

Datasheet for ABIN1385977  
**anti-TCF21 antibody (AA 41-140)**[Go to Product page](#)

## 1 Image

## Overview

Quantity:	100 µL
Target:	TCF21
Binding Specificity:	AA 41-140
Reactivity:	Human, Mouse, Rat
Host:	Rabbit
Clonality:	Polyclonal
Conjugate:	This TCF21 antibody is un-conjugated
Application:	Western Blotting (WB), ELISA, Immunohistochemistry (Paraffin-embedded Sections) (IHC (p)), Immunocytochemistry (ICC), Immunohistochemistry (Frozen Sections) (IHC (fro))

## Product Details

Immunogen:	KLH conjugated synthetic peptide derived from human TCF-21/POD1
Isotype:	IgG
Cross-Reactivity:	Human, Mouse, Rat
Predicted Reactivity:	Cow,Pig,Horse,Rabbit
Purification:	Purified by Protein A.

## Target Details

Target:	TCF21
Alternative Name:	POD1 ( <a href="#">TCF21 Products</a> )

## Target Details

Background: Synonyms: POD1, bHLHa23, Transcription factor 21, TCF-21, Capsulin, Class A basic helix-loop-helix protein 23, Epicardin, Podocyte-expressed 1, Pod-1, TCF21

Background: Involved in epithelial-mesenchymal interactions in kidney and lung morphogenesis that include epithelial differentiation and branching morphogenesis. May play a role in the specification or differentiation of one or more subsets of epicardial cell types.

Gene ID: 6943

UniProt: [O43680](#)

Pathways: [Intracellular Steroid Hormone Receptor Signaling Pathway](#), [Regulation of Intracellular Steroid Hormone Receptor Signaling](#)

## Application Details

Application Notes: WB 1:300-5000  
ELISA 1:500-1000  
IHC-P 1:200-400  
IHC-F 1:100-500  
ICC 1:100-500

Restrictions: For Research Use only

## Handling

Format: Liquid

Concentration: 1 µg/µL

Buffer: 0.01M TBS( pH 7.4) with 1 % BSA, 0.02 % Proclin300 and 50 % Glycerol.

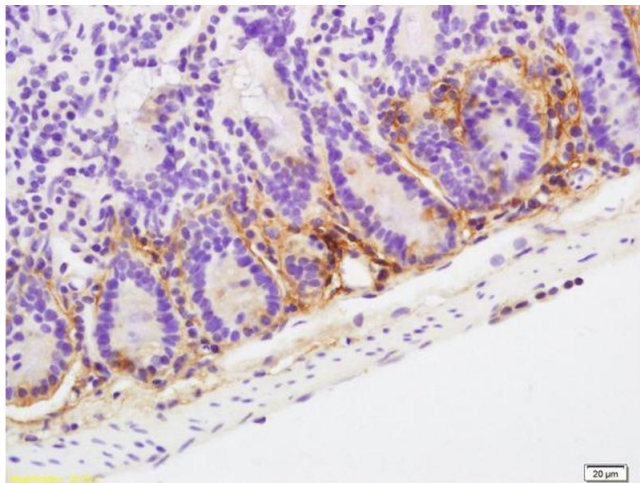
Preservative: ProClin

Precaution of Use: This product contains ProClin: a POISONOUS AND HAZARDOUS SUBSTANCE, which should be handled by trained staff only.

Storage: 4 °C,-20 °C

Storage Comment: Shipped at 4°C. Store at -20°C for one year. Avoid repeated freeze/thaw cycles.

Expiry Date: 12 months



#### Immunohistochemistry

**Image 1.** Formalin-fixed and paraffin embedded mouse small intestine labeled with Anti-POD1/TCF-21 Polyclonal Antibody, Unconjugated (ABIN1385977) at 1:200 followed by conjugation to the secondary antibody and DAB staining