



[Go to Product page](#)

Datasheet for ABIN1385980
anti-GPS1 antibody (AA 324-370)

2 Images

Overview

Quantity:	100 µL
Target:	GPS1
Binding Specificity:	AA 324-370
Reactivity:	Human, Mouse, Rat
Host:	Rabbit
Clonality:	Polyclonal
Conjugate:	This GPS1 antibody is un-conjugated
Application:	Western Blotting (WB), Immunofluorescence (Paraffin-embedded Sections) (IF (p)), Immunohistochemistry (Paraffin-embedded Sections) (IHC (p))

Product Details

Immunogen:	KLH conjugated synthetic peptide derived from human CSN1
Isotype:	IgG
Cross-Reactivity:	Human, Mouse, Rat
Purification:	Purified by Protein A.

Target Details

Target:	GPS1
Alternative Name:	CSN1 (GPS1 Products)
Background:	Synonyms: CSN1, COPS1, COP9 signalosome complex subunit 1, SGN1, Signalosome subunit

Target Details

1, G protein pathway suppressor 1, GPS-1, JAB1-containing signalosome subunit 1, Protein MFH, GPS1

Background: Essential component of the COP9 signalosome complex (CSN), a complex involved in various cellular and developmental processes. The CSN complex is an essential regulator of the ubiquitin (Ubl) conjugation pathway by mediating the deneddylation of the cullin subunits of SCF-type E3 ligase complexes, leading to decrease the Ubl ligase activity of SCF-type complexes such as SCF, CSA or DDB2. The complex is also involved in phosphorylation of p53/TP53, c-jun/JUN, IκappaBα/NFKBIA, ITPK1 and IRF8/ICSBP, possibly via its association with CK2 and PKD kinases. CSN-dependent phosphorylation of TP53 and JUN promotes and protects degradation by the Ubl system, respectively. Suppresses G-protein- and mitogen-activated protein kinase-mediated signal transduction.

Gene ID: 2873

UniProt: [Q13098](#)

Pathways: [Cell Division Cycle](#)

Application Details

Application Notes: WB 1:300-5000
IHC-P 1:200-400
IF(IHC-P) 1:50-200

Restrictions: For Research Use only

Handling

Format: Liquid

Concentration: 1 µg/µL

Buffer: 0.01M TBS(pH 7.4) with 1 % BSA, 0.02 % Proclin300 and 50 % Glycerol.

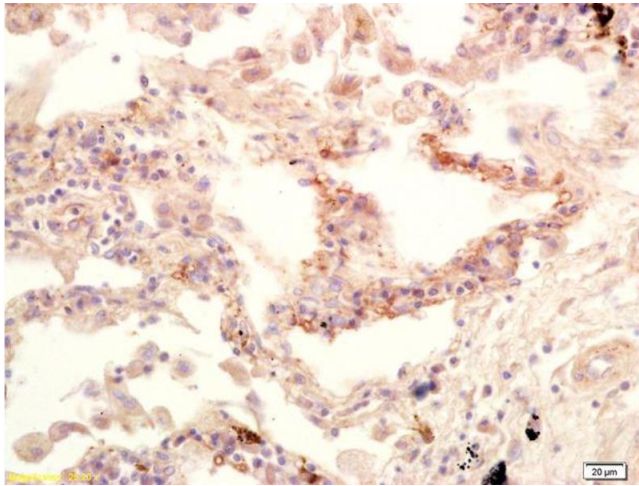
Preservative: ProClin

Precaution of Use: This product contains ProClin: a POISONOUS AND HAZARDOUS SUBSTANCE, which should be handled by trained staff only.

Storage: 4 °C, -20 °C

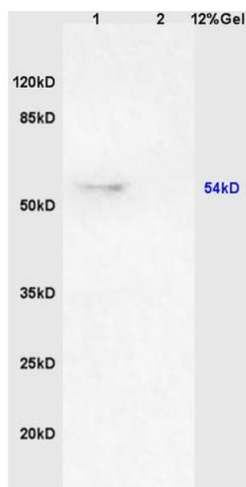
Storage Comment: Shipped at 4°C. Store at -20°C for one year. Avoid repeated freeze/thaw cycles.

Expiry Date: 12 months



Immunohistochemistry

Image 1. Formalin-fixed and paraffin embedded human lung carcinoma labeled with Anti-GPS1/CSN1 Polyclonal Antibody, Unconjugated (ABIN1385980) at 1:200 followed by conjugation to the secondary antibody and DAB staining.



SDS-PAGE

Image 2. Lane 1: rat brain lysates Lane 2: human colon carcinoma lysates probed with Anti GPS1/CSN1 Polyclonal Antibody, Unconjugated (ABIN1385980) at 1:200 in 4C. Followed by conjugation to secondary antibody at 1:3000 90min in 37C. Predicted band 54kD. Observed band size: 54kD.