

Datasheet for ABIN1386010

anti-NDE1 antibody**1** Image[Go to Product page](#)

Overview

Quantity:	100 µL
Target:	NDE1
Reactivity:	Human, Mouse, Rat
Host:	Rabbit
Clonality:	Polyclonal
Conjugate:	This NDE1 antibody is un-conjugated
Application:	Western Blotting (WB), Immunofluorescence (Paraffin-embedded Sections) (IF (p)), Immunohistochemistry (Paraffin-embedded Sections) (IHC (p))

Product Details

Immunogen:	KLH conjugated synthetic peptide derived from human NDE1
Isotype:	IgG
Cross-Reactivity:	Human, Mouse, Rat
Purification:	Purified by Protein A.

Target Details

Target:	NDE1
Alternative Name:	NDE1 (NDE1 Products)
Background:	Synonyms: HOM TES 87, LIS1 interacting protein NUDE1 rat homolog, LIS1 interacting protein NUDE1, LIS4, NDE 1, NDE1, NDE-1, NDE1_HUMAN, Nuclear distribution gene E homolog 1, Nuclear distribution protein nudE homolog 1, NUDE 1, NudE, NudE nuclear distribution gene E

Target Details

homolog 1 A. nidulans, NudE nuclear distribution gene E homolog 1, NUDE1.

Background: Required for centrosome duplication. Essential for the development of the cerebral cortex. May regulate the production of neurons by controlling the orientation of the mitotic spindle during division of cortical neuronal progenitors of the proliferative ventricular zone of the brain. Orientation of the division plane perpendicular to the layers of the cortex gives rise to two proliferative neuronal progenitors whereas parallel orientation of the division plane yields one proliferative neuronal progenitor and a post-mitotic neuron. A premature shift towards a neuronal fate within the progenitor population may result in an overall reduction in the final number of neurons and an increase in the number of neurons in the deeper layers of the cortex (By similarity). Required for formation and function of the mitotic spindle.

Gene ID: 54820

Application Details

Application Notes: WB 1:300-5000
IHC-P 1:200-400
IF(IHC-P) 1:50-200

Restrictions: For Research Use only

Handling

Format: Liquid

Concentration: 1 µg/µL

Buffer: 0.01M TBS(pH 7.4) with 1 % BSA, 0.02 % Proclin300 and 50 % Glycerol.

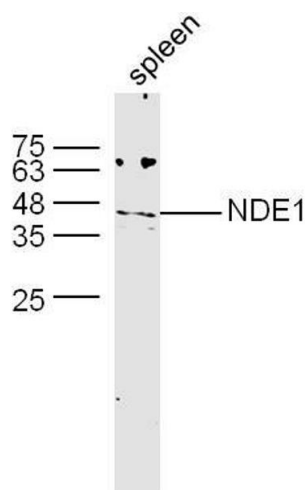
Preservative: ProClin

Precaution of Use: This product contains ProClin: a POISONOUS AND HAZARDOUS SUBSTANCE, which should be handled by trained staff only.

Storage: 4 °C,-20 °C

Storage Comment: Shipped at 4°C. Store at -20°C for one year. Avoid repeated freeze/thaw cycles.

Expiry Date: 12 months



Western Blotting

Image 1. Mouse spleen lysates probed with NDE1 Polyclonal Antibody, unconjugated at 1:300 overnight at 4°C followed by a conjugated secondary antibody at 1:10000 for 60 minutes at 37°C.