

Datasheet for ABIN1386018  
**anti-IGF2BP1 antibody (AA 31-130)**[Go to Product page](#)

## 1 Image

## Overview

Quantity:	100 µL
Target:	IGF2BP1
Binding Specificity:	AA 31-130
Reactivity:	Human, Rat, Mouse
Host:	Rabbit
Clonality:	Polyclonal
Conjugate:	This IGF2BP1 antibody is un-conjugated
Application:	ELISA, Immunofluorescence (Cultured Cells) (IF (cc)), Immunofluorescence (Paraffin-embedded Sections) (IF (p)), Immunohistochemistry (Paraffin-embedded Sections) (IHC (p)), Immunohistochemistry (Frozen Sections) (IHC (fro)), Immunocytochemistry (ICC)

## Product Details

Immunogen:	KLH conjugated synthetic peptide derived from human IGF2BP1/IMP1
Isotype:	IgG
Cross-Reactivity:	Human, Mouse, Rat
Predicted Reactivity:	Dog,Cow,Sheep,Pig,Horse,Chicken,Rabbit,Zebrafish
Purification:	Purified by Protein A.

## Target Details

Target:	IGF2BP1
---------	---------

## Target Details

Alternative Name:	IGF2BP1 ( <a href="#">IGF2BP1 Products</a> )
Background:	<p>Synonyms: IMP1, ZBP1, CRDBP, IMP-1, CRD-BP, VICKZ1, Insulin-like growth factor 2 mRNA-binding protein 1, IGF2 mRNA-binding protein 1, Coding region determinant-binding protein, IGF-II mRNA-binding protein 1, VICKZ family member 1, Zipcode-binding protein 1, ZBP-1, IGF2BP1</p> <p>Background: RNA-binding factor that recruits target transcripts to cytoplasmic protein-RNA complexes (mRNPs). This transcript 'caging' into mRNPs allows mRNA transport and transient storage. It also modulates the rate and location at which target transcripts encounter the translational apparatus and shields them from endonuclease attacks or microRNA-mediated degradation. Plays a direct role in the transport and translation of transcripts required for axonal regeneration in adult sensory neurons (By similarity). Regulates localized beta-actin/ACTB mRNA translation, a crucial process for cell polarity, cell migration and neurite outgrowth. Co-transcriptionally associates with the ACTB mRNA in the nucleus. This binding involves a conserved 54-nucleotide element in the ACTB mRNA 3'-UTR, known as the 'zipcode'. The RNP thus formed is exported to the cytoplasm, binds to a motor protein and is transported along the cytoskeleton to the cell periphery. During transport, prevents ACTB mRNA from being translated into protein. When the RNP complex reaches its destination near the plasma membrane, IGF2BP1 is phosphorylated. This releases the mRNA, allowing ribosomal 40S and 60S subunits to assemble and initiate ACTB protein synthesis. Monomeric ACTB then assembles into the subcortical actin cytoskeleton (By similarity). During neuronal development, key regulator of neurite outgrowth, growth cone guidance and neuronal cell migration, presumably through the spatiotemporal fine tuning of protein synthesis, such as that of ACTB (By similarity). May regulate mRNA transport to activated synapses (By similarity). Binds to and stabilizes ABCB1/MDR-1 mRNA (By similarity). During interstitial wound repair, interacts with and stabilizes PTGS2 transcript. PTGS2 mRNA stabilization may be crucial for colonic mucosal wound healing (By similarity). Binds to the 3'-UTR of IGF2 mRNA by a mechanism of cooperative and sequential dimerization and regulates IGF2 mRNA subcellular localization and translation.</p>

Gene ID: 10642

UniProt: [Q9NZI8](#)

## Application Details

Application Notes:	ELISA 1:500-1000
	IHC-P 1:200-400
	IHC-F 1:100-500

Application Details

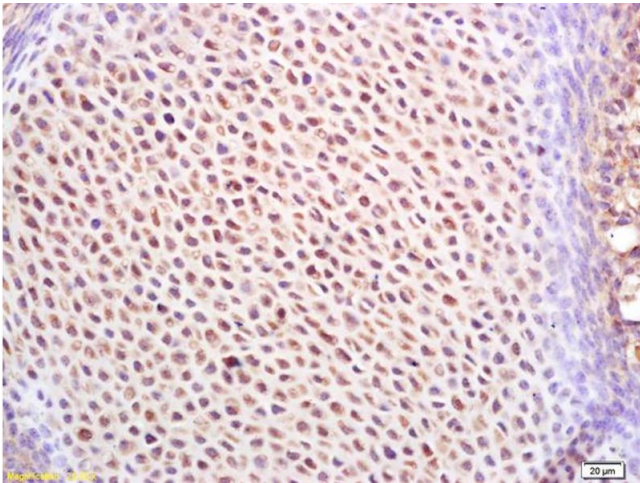
	IF(IHC-P) 1:50-200
	IF(IHC-F) 1:50-200
	IF(ICC) 1:50-200
	ICC 1:100-500

Restrictions: For Research Use only

Handling

Format:	Liquid
Concentration:	1 µg/µL
Buffer:	0.01M TBS( pH 7.4) with 1 % BSA, 0.02 % Proclin300 and 50 % Glycerol.
Preservative:	ProClin
Precaution of Use:	This product contains ProClin: a POISONOUS AND HAZARDOUS SUBSTANCE, which should be handled by trained staff only.
Storage:	4 °C,-20 °C
Storage Comment:	Shipped at 4°C. Store at -20°C for one year. Avoid repeated freeze/thaw cycles.
Expiry Date:	12 months

Images



Immunohistochemistry

**Image 1.** Formalin-fixed and paraffin embedded mouse embryo labeled with Rabbit Anti IGF2BP1/IMP1 Polyclonal Antibody, Unconjugated (ABIN1386018) at 1:200 followed by conjugation to the secondary antibody and DAB staining