

Datasheet for ABIN1386033  
**anti-TULP3 antibody (AA 251-350)**[Go to Product page](#)

## 1 Image

## Overview

Quantity:	100 µL
Target:	TULP3
Binding Specificity:	AA 251-350
Reactivity:	Human
Host:	Rabbit
Clonality:	Polyclonal
Conjugate:	This TULP3 antibody is un-conjugated
Application:	Western Blotting (WB), ELISA, Immunohistochemistry (Paraffin-embedded Sections) (IHC (p)), Immunocytochemistry (ICC), Immunofluorescence (Cultured Cells) (IF (cc)), Immunofluorescence (Paraffin-embedded Sections) (IF (p)), Immunohistochemistry (Frozen Sections) (IHC (fro))

## Product Details

Immunogen:	KLH conjugated synthetic peptide derived from human TULP3
Isotype:	IgG
Cross-Reactivity:	Human
Predicted Reactivity:	Mouse,Rat,Dog,Horse,Chicken
Purification:	Purified by Protein A.

## Target Details

Target:	TULP3
---------	-------

## Target Details

Alternative Name:	TULP3 ( <a href="#">TULP3 Products</a> )
Background:	<p>Synonyms: Tubby like protein 3, Tubby related protein 3, Tubby-like protein 3, Tubby-related protein 3, TUBL 3, TUBL3, TULP 3, TULP3, TULP3_HUMAN.</p> <p>Background: Mutations in the mouse Tub gene gradually lead to obesity, strongly resembling the late-onset obesity observed in the human population. In addition to excessive deposition of adipose tissue, mice with the Tub phenotype also suffer retinal degeneration and neurosensory hearing loss. A human homolog of the Tub gene has been identified, as have three related proteins, called Tubby-like protein 1 (TULP1), TULP2 and TULP3. When compared to TULP1 and TULP2, TULP3 has a wider tissue expression and is phylogenetically more similar to Tub than either TULP1 or TULP2. TULP1, expressed specifically in the retina, maps to the chromosomal region known to be involved in retinitis pigmentosa, while TULP2 maps within the minimal interval for the rod-cone dystrophy. TULP3 maps to human chromosome 12p13, and shares 69 % homology to mouse TULP3. Human RNA from testis, ovary, thyroid and spinal cord contain highly detectable levels of TULP3 transcripts. In the retina, TULP3 is expressed specifically in the inner nuclear layer and ganglion cell layer. TULP1, TULP2 and TULP3 may comprise a unique family of bipartite transcription factors.</p>
Pathways:	<a href="#">Regulation of G-Protein Coupled Receptor Protein Signaling, Tube Formation</a>

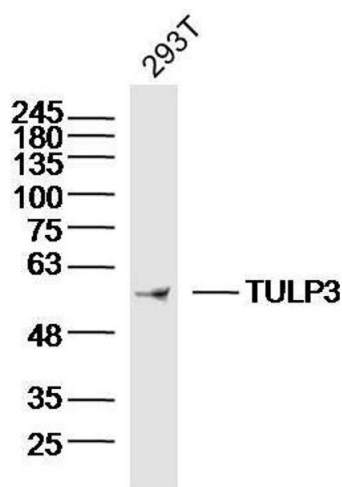
## Application Details

Application Notes:	WB 1:300-5000 ELISA 1:500-1000 IHC-P 1:200-400 IHC-F 1:100-500 IF(IHC-P) 1:50-200 IF(IHC-F) 1:50-200 IF(ICC) 1:50-200 ICC 1:100-500
Restrictions:	For Research Use only
Handling	
Format:	Liquid
Concentration:	1 µg/µL
Buffer:	0.01M TBS( pH 7.4) with 1 % BSA, 0.02 % Proclin300 and 50 % Glycerol.

Handling

Preservative:	ProClin
Precaution of Use:	This product contains ProClin: a POISONOUS AND HAZARDOUS SUBSTANCE, which should be handled by trained staff only.
Storage:	4 °C,-20 °C
Storage Comment:	Shipped at 4°C. Store at -20°C for one year. Avoid repeated freeze/thaw cycles.
Expiry Date:	12 months

Images



Western Blotting

**Image 1.** 293T Cell lysates probed with TULP3 Polyclonal Antibody, unconjugated at 1:300 overnight at 4°C followed by a conjugated secondary antibody for 60 minutes at 37°C.