



[Go to Product page](#)

Datasheet for ABIN1386099

anti-HLA-DM antibody (AA 101-200)

2 Images

Overview

| | |
|----------------------|--|
| Quantity: | 100 µL |
| Target: | HLA-DM |
| Binding Specificity: | AA 101-200 |
| Reactivity: | Mouse |
| Host: | Rabbit |
| Clonality: | Polyclonal |
| Conjugate: | This HLA-DM antibody is un-conjugated |
| Application: | ELISA, Immunofluorescence (Cultured Cells) (IF (cc)), Immunofluorescence (Paraffin-embedded Sections) (IF (p)), Immunohistochemistry (Frozen Sections) (IHC (fro)), Immunohistochemistry (Paraffin-embedded Sections) (IHC (p)), Western Blotting (WB) |

Product Details

| | |
|-----------------------|--|
| Immunogen: | KLH conjugated synthetic peptide derived from human HLA DM |
| Isotype: | IgG |
| Cross-Reactivity: | Mouse |
| Predicted Reactivity: | Human,Rat,Dog,Cow,Pig,Horse |
| Purification: | Purified by Protein A. |

Target Details

| | |
|---------|--------|
| Target: | HLA-DM |
|---------|--------|

Target Details

Alternative Name: HLA DM

Background: Synonyms: Class II histocompatibility antigen M alpha chain, D6S222E, DMA, HLA class II histocompatibility antigen DM alpha chain, HLA DMA, HLADM, Major histocompatibility complex class II DM alpha, MHC class II antigen DMA, Really interesting new gene 6 protein, Ring 6, Ring6, DMA_HUMAN.

Background: Human Leukocyte Antigens are highly polymorphic proteins that are involved in the presentation of antigens to the T-cell receptor. There are two classes of HLA antigens, class I (HLA-A, HLA-B and HLA-C) and class II (HLA-D). This antibody can be used for HLA typing. HLA DM plays a critical role in catalyzing the release of class II HLA-associated invariant chain-derived peptides (CLIP) from newly synthesized class II HLA molecules and freeing the peptide binding site for acquisition of antigenic peptides.

Gene ID: 3108

Application Details

Application Notes: WB 1:300-5000
ELISA 1:500-1000
IHC-P 1:200-400
IHC-F 1:100-500
IF(IHC-P) 1:50-200
IF(IHC-F) 1:50-200
IF(ICC) 1:50-200

Restrictions: For Research Use only

Handling

Format: Liquid

Concentration: 1 µg/µL

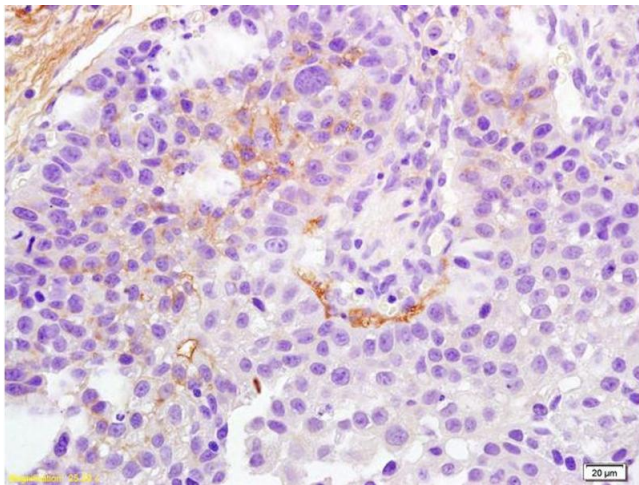
Buffer: 0.01M TBS(pH 7.4) with 1 % BSA, 0.02 % Proclin300 and 50 % Glycerol.

Preservative: ProClin

Precaution of Use: This product contains ProClin: a POISONOUS AND HAZARDOUS SUBSTANCE, which should be handled by trained staff only.

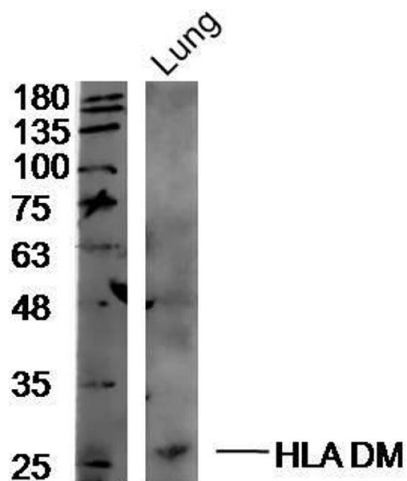
Storage: 4 °C,-20 °C

Storage Comment: Shipped at 4°C. Store at -20°C for one year. Avoid repeated freeze/thaw cycles.



Immunohistochemistry

Image 1. Formalin-fixed and paraffin embedded human bladder carcinoma labeled with Anti HLA DM Polyclonal Antibody, Unconjugated (ABIN1386099) at 1:200 followed by conjugation to the secondary antibody and DAB staining



Western Blotting

Image 2. Mouse lung lysates probed with Rabbit Anti-HLA DM Polyclonal Antibody, Unconjugated at 1:300 overnight at 4°C. Followed by a conjugated secondary antibody -HRP) at 1:5000 for 90 min at 37°C.