

Datasheet for ABIN1386141
anti-C9ORF72 antibody (AA 391-481)[Go to Product page](#)

3 Images

Overview

Quantity:	100 µL
Target:	C9ORF72
Binding Specificity:	AA 391-481
Reactivity:	Human, Rat, Mouse
Host:	Rabbit
Clonality:	Polyclonal
Conjugate:	This C9ORF72 antibody is un-conjugated
Application:	ELISA, Western Blotting (WB), Flow Cytometry (FACS), Immunofluorescence (Cultured Cells) (IF (cc)), Immunofluorescence (Paraffin-embedded Sections) (IF (p)), Immunohistochemistry (Paraffin-embedded Sections) (IHC (p)), Immunocytochemistry (ICC), Immunohistochemistry (Frozen Sections) (IHC (fro))

Product Details

Immunogen:	KLH conjugated synthetic peptide derived from human C9orf72
Isotype:	IgG
Cross-Reactivity:	Human, Mouse, Rat
Predicted Reactivity:	Dog,Cow,Pig,Horse,Chicken
Purification:	Purified by Protein A.

Target Details

Target:	C9ORF72
---------	---------

Target Details

Alternative Name:	C9orf72 (C9ORF72 Products)
Background:	<p>Synonyms: ALSFTD, FTDALS, Protein C9orf72, C9orf72</p> <p>Background: Chromosome 9 consists of about 145 million bases and 4 % of the human genome and encodes nearly 900 genes. Considered to play a role in gender determination, deletion of the distal portion of 9p can lead to development of male to female sex reversal, the phenotype of a female with a male X,Y genotype. Hereditary hemorrhagic telangiectasia, which is characterized by harmful vascular defects, is associated with the chromosome 9 gene encoding endoglin protein, ENG. Familial dysautonomia is also associated with chromosome 9 though through the gene IKBKAP. Notably, chromosome 9 encompasses the largest interferon family gene cluster. Chromosome 9 is partnered with chromosome 22 in the translocation leading to the aberrant production of BCR-ABL fusion protein often found in leukemias. The C9orf72 gene product has been provisionally designated C9orf72 pending further characterization. There are two isoforms of C9orf72 that are produced as a result of alternative splicing events.</p>
Gene ID:	203228
UniProt:	Q96LT7

Application Details

Application Notes:	WB 1:300-5000 ELISA 1:500-1000 FCM 1:20-100 IHC-P 1:200-400 IHC-F 1:100-500 IF(IHC-P) 1:50-200 IF(IHC-F) 1:50-200 IF(ICC) 1:50-200 ICC 1:100-500
Restrictions:	For Research Use only

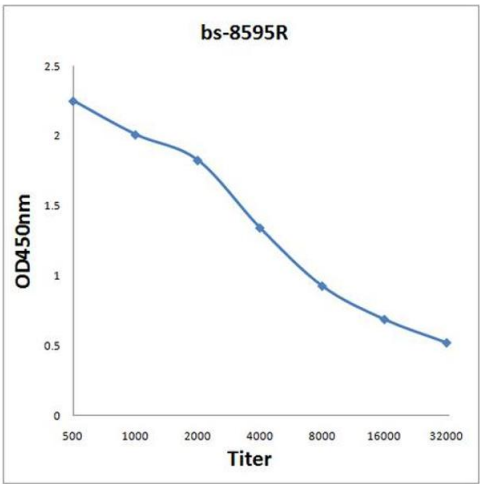
Handling

Format:	Liquid
Concentration:	1 µg/µL
Buffer:	0.01M TBS(pH 7.4) with 1 % BSA, 0.02 % Proclin300 and 50 % Glycerol.

Handling

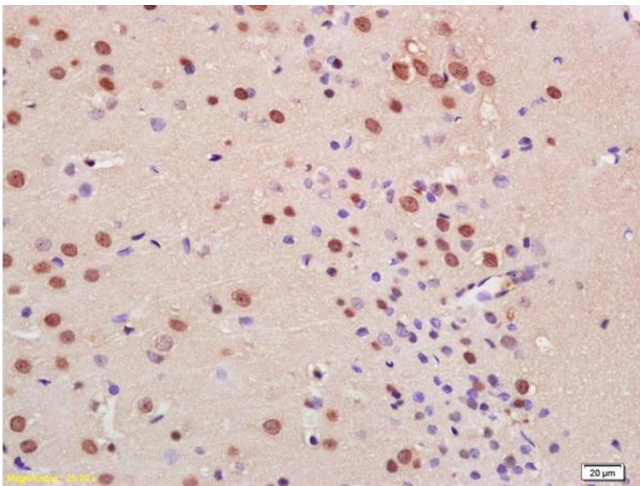
Preservative:	ProClin
Precaution of Use:	This product contains ProClin: a POISONOUS AND HAZARDOUS SUBSTANCE, which should be handled by trained staff only.
Storage:	4 °C,-20 °C
Storage Comment:	Shipped at 4°C. Store at -20°C for one year. Avoid repeated freeze/thaw cycles.
Expiry Date:	12 months

Images



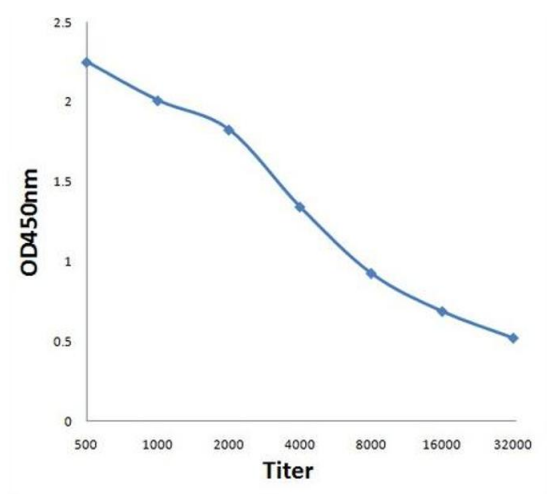
ELISA

Image 1. Antigen: 2 µg/100 µL Primary: Antiserum, 1:500, 1:1000, 1:2000, 1:4000, 1:8000, 1:16000, 1:32000; Secondary: HRP conjugated Rabbit Anti-Goat IgG at 1: 5000; TMB staining Read the data in Microplate Reader by 450nm.



Immunohistochemistry

Image 2. Formalin-fixed and paraffin embedded rat brain with labeled Anti-C9orf72 Polyclonal Antibody, Unconjugated (ABIN1386141) at 1:200, followed by conjugation to the secondary antibody and DAB staining



ELISA

Image 3. Antigen: 0.2ug/100ul, Primary: Antiserum, 1:500, 1:1000, 1:2000, 1:4000, 1:8000, 1:16000, 1:32000, Secondary: HRP conjugated Goat-Anti-Rabbit IgG at 1: 5000, TMB staining, Read the data in MicroplateReader by 450nm