

Datasheet for ABIN1386145
anti-SLC25A37 antibody[Go to Product page](#)

1 Image

Overview

Quantity:	100 µL
Target:	SLC25A37
Reactivity:	Human, Rat, Mouse
Host:	Rabbit
Clonality:	Polyclonal
Conjugate:	This SLC25A37 antibody is un-conjugated
Application:	Western Blotting (WB), Immunofluorescence (Paraffin-embedded Sections) (IF (p)), Immunohistochemistry (Paraffin-embedded Sections) (IHC (p))

Product Details

Immunogen:	KLH conjugated synthetic peptide derived from human Mitoferrin 1
Isotype:	IgG
Cross-Reactivity:	Human, Mouse, Rat
Purification:	Purified by Protein A.

Target Details

Target:	SLC25A37
Alternative Name:	Mitoferrin 1 (SLC25A37 Products)
Background:	Synonyms: SLC25A37, HT015, MFRN, Mitochondrial iron transporter 1, Mitochondrial solute carrier protein, Mitoferrin1, Mitoferrin-1, MSC, MSCP, predicted protein of HQ2217, PRO1278, PRO1584, PRO2217, Solute carrier family 25 member 37.

Target Details

Background: Mitoferrin1, SLC25A37, belongs to the mitochondrial carrier family and contains 3 Solcar repeats. It is a mitochondrial iron transporter that specifically mediates iron uptake in developing erythroid cells and plays an essential role in heme biosynthesis.

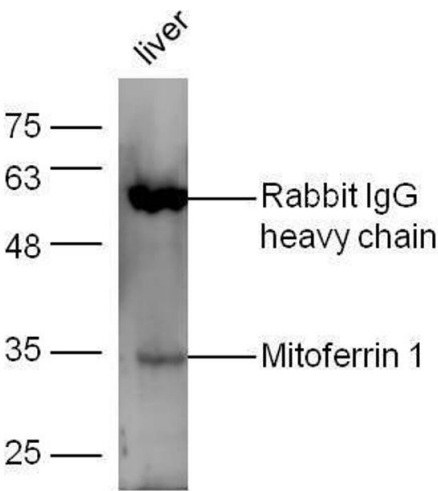
Gene ID:	51312
Pathways:	Transition Metal Ion Homeostasis

Application Details

Application Notes:	WB 1:300-5000 IHC-P 1:200-400 IF(IHC-P) 1:50-200
Restrictions:	For Research Use only

Handling

Format:	Liquid
Concentration:	1 µg/µL
Buffer:	0.01M TBS(pH 7.4) with 1 % BSA, 0.02 % Proclin300 and 50 % Glycerol.
Preservative:	ProClin
Precaution of Use:	This product contains ProClin: a POISONOUS AND HAZARDOUS SUBSTANCE, which should be handled by trained staff only.
Storage:	4 °C,-20 °C
Storage Comment:	Shipped at 4°C. Store at -20°C for one year. Avoid repeated freeze/thaw cycles.
Expiry Date:	12 months



Western Blotting

Image 1. Mouse liver lysates probed with Anti-Mitoferrin 1 Polyclonal Antibody, Unconjugated at 1:5000 for 90 min at 37°C.