

Datasheet for ABIN1386171  
**anti-PDE7B antibody (AA 281-360)**

## 5 Images

[Go to Product page](#)

## Overview

Quantity:	100 µL
Target:	PDE7B
Binding Specificity:	AA 281-360
Reactivity:	Human, Rat, Mouse
Host:	Rabbit
Clonality:	Polyclonal
Conjugate:	This PDE7B antibody is un-conjugated
Application:	Western Blotting (WB), ELISA, Flow Cytometry (FACS), Immunohistochemistry (Paraffin-embedded Sections) (IHC (p)), Immunofluorescence (Cultured Cells) (IF (cc)), Immunofluorescence (Paraffin-embedded Sections) (IF (p)), Immunocytochemistry (ICC), Immunohistochemistry (Frozen Sections) (IHC (fro))

## Product Details

Immunogen:	KLH conjugated synthetic peptide derived from human PDE7B
Isotype:	IgG
Specificity:	Due to the sequence similarity, there is a chance that this antibody will recognize PDE7A, but the sequence is not continuous.
Cross-Reactivity:	Human, Mouse, Rat
Predicted Reactivity:	Dog,Cow,Sheep,Pig,Horse
Purification:	Purified by Protein A.

## Target Details

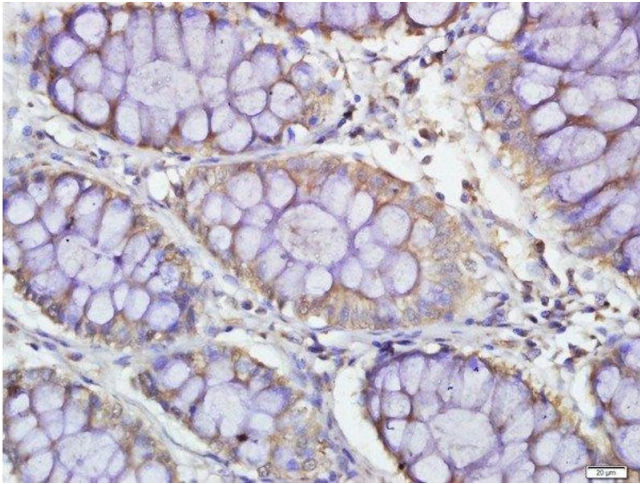
Target:	PDE7B
Alternative Name:	PDE7B ( <a href="#">PDE7B Products</a> )
Background:	Synonyms: bA472E5.1, cAMP-specific 3',5'-cyclic phosphodiesterase 7B, PDE7B Background: Hydrolyzes the second messenger cAMP, which is a key regulator of many important physiological processes. May be involved in the control of cAMP-mediated neural activity and cAMP metabolism in the brain.
Gene ID:	27115
UniProt:	<a href="#">Q9NP56</a>
Pathways:	<a href="#">cAMP Metabolic Process</a>

## Application Details

Application Notes:	WB 1:300-5000 ELISA 1:500-1000 FCM 1:20-100 IHC-P 1:200-400 IHC-F 1:100-500 IF(IHC-P) 1:50-200 IF(IHC-F) 1:50-200 IF(ICC) 1:50-200 ICC 1:100-500
Restrictions:	For Research Use only

## Handling

Format:	Liquid
Concentration:	1 µg/µL
Buffer:	0.01M TBS( pH 7.4) with 1 % BSA, 0.02 % Proclin300 and 50 % Glycerol.
Preservative:	ProClin
Precaution of Use:	This product contains ProClin: a POISONOUS AND HAZARDOUS SUBSTANCE, which should be handled by trained staff only.
Storage:	4 °C,-20 °C
Storage Comment:	Shipped at 4°C. Store at -20°C for one year. Avoid repeated freeze/thaw cycles.

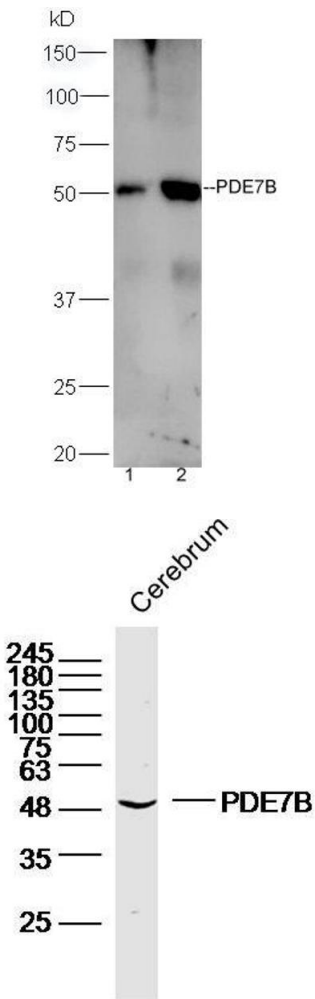


**Immunohistochemistry (Paraffin-embedded Sections)**

**Image 1.** Paraformaldehyde-fixed, paraffin embedded human colon carcinoma, Antigen retrieval by boiling in sodium citrate buffer (pH6.0) for 15min, Block endogenous peroxidase by 3% hydrogen peroxide for 20 minutes, Blocking buffer (normal goat serum) at 37°C for 30min, Antibody incubation with PDE7B Polyclonal Antibody, Unconjugated at 1:500 overnight at 4°C, followed by a conjugated secondary for 20 minutes and DAB staining.

**Western Blotting**

**Image 2.** Lane 1:mouse liver lysates Lane 2:mouse brain probed with Rabbit Anti-PDE7B Polyclonal Antibody, Unconjugated (ABIN1386171) at 1:300 overnight at 4 °C. Followed by conjugation to secondary antibody at 1:5000 for 90 min at 37 °C.



**Western Blotting**

**Image 3.** Mouse cerebrum lysates probed with PDE7B Polyclonal Antibody, unconjugated at 1:300 overnight at 4°C followed by a conjugated secondary antibody at 1:10000 for 90 minutes at 37°C.

Please check the [product details page](#) for more images. Overall 5 images are available for ABIN1386171.