



[Go to Product page](#)

Datasheet for ABIN1386175

anti-Aggrecan antibody (AA 601-700)

2 Images

Overview

Quantity:	100 µL
Target:	Aggrecan (ACAN)
Binding Specificity:	AA 601-700
Reactivity:	Rat, Mouse, Rabbit
Host:	Rabbit
Clonality:	Polyclonal
Conjugate:	This Aggrecan antibody is un-conjugated
Application:	ELISA, Immunocytochemistry (ICC), Immunohistochemistry (Paraffin-embedded Sections) (IHC (p)), Immunofluorescence (Cultured Cells) (IF (cc)), Immunofluorescence (Paraffin-embedded Sections) (IF (p)), Immunohistochemistry (Frozen Sections) (IHC (fro))

Product Details

Immunogen:	KLH conjugated synthetic peptide derived from Human Aggrecan
Isotype:	IgG
Cross-Reactivity:	Mouse, Rat
Purification:	Purified by Protein A.

Target Details

Target:	Aggrecan (ACAN)
Alternative Name:	Aggrecan (ACAN Products)

Target Details

Background: Synonyms: AGC1, CSPG1, MSK16, Cartilage-specific proteoglycan core protein, CSPCP, Aggrecan core protein, Chondroitin sulfate proteoglycan 1

Background: The large chondroitin sulfate proteoglycan, aggrecan, is the predominant proteoglycan present in cartilage. Aggrecan is a member of the chondroitin sulphate proteoglycan family, which also includes versican/PG-M, neurocan and brevican. Aggrecan is a complex multidomain macromolecule that undergoes extensive processing and post-translational modification. Aggrecan in cartilage forms aggregates with hyaluronan and link protein, embedded in a collagen network. Aggrecan accounts for the compressive stiffness and resilience of the hyaline cartilage. Many forms of inflammatory arthritis are shown to be accompanied with aggrecan degradation and loss from the cartilage. Brevican is a brain proteoglycan of the aggrecan/versican/neurocan family. In the adult brain, the brevican core protein undergoes proteolytic cleavage and exists as a full-length form a carboxy-terminal fragment and an amino-terminal fragment.

UniProt: [P16112](#)

Pathways: [Glycosaminoglycan Metabolic Process](#), [Dicarboxylic Acid Transport](#)

Application Details

Application Notes: WB 1:300-5000
ELISA 1:500-1000
IHC-P 1:200-400
IHC-F 1:100-500
IF(IHC-P) 1:50-200
IF(IHC-F) 1:50-200
IF(ICC) 1:50-200
ICC 1:100-500

Restrictions: For Research Use only

Handling

Format: Liquid

Concentration: 1 µg/µL

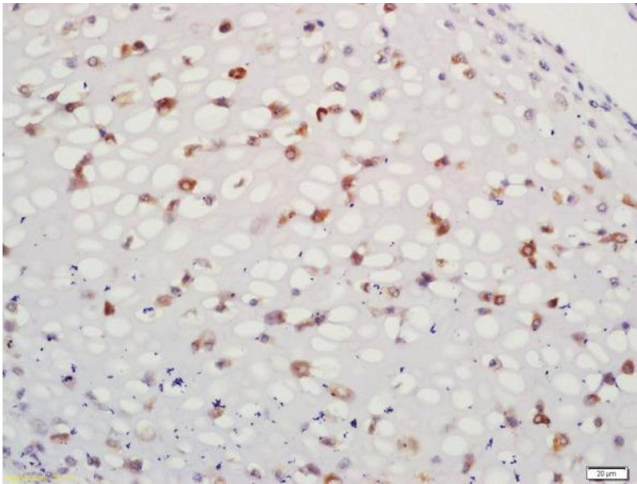
Buffer: 0.01M TBS(pH 7.4) with 1 % BSA, 0.02 % Proclin300 and 50 % Glycerol.

Preservative: ProClin

Handling

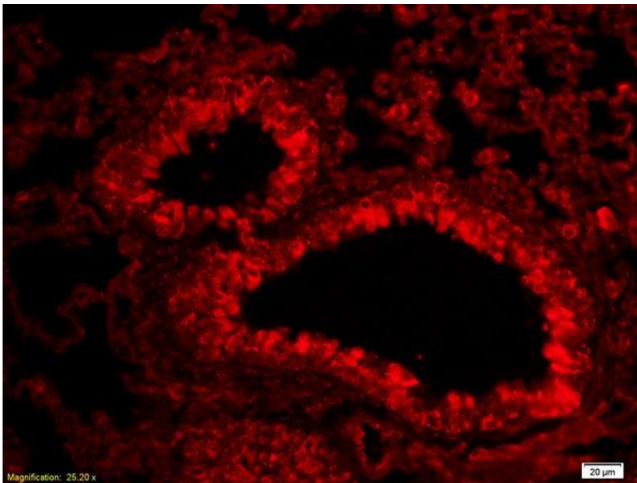
Precaution of Use:	This product contains ProClin: a POISONOUS AND HAZARDOUS SUBSTANCE, which should be handled by trained staff only.
Storage:	4 °C,-20 °C
Storage Comment:	Shipped at 4°C. Store at -20°C for one year. Avoid repeated freeze/thaw cycles.
Expiry Date:	12 months

Images



Immunohistochemistry

Image 1. Formalin-fixed and paraffin embedded bone of mouse embryo labeled with Anti-CATSPER Polyclonal Antibody, Unconjugated (ABIN1386175) at 1:200 followed by conjugation to the secondary antibody and DAB staining



Immunofluorescence

Image 2. Formalin-fixed and paraffin-embedded rat lung labeled with Anti-Aggrecan Polyclonal Antibody, Unconjugated (ABIN1386175) 1:200, overnight at 4°C, The secondary antibody was Goat Anti-Rabbit IgG, Cy3 conjugated used at 1:200 dilution for 40 minutes at 37°C.