

Datasheet for ABIN1386197
anti-CCKAR antibody (AA 161-200)[Go to Product page](#)

1 Image

Overview

Quantity:	100 µL
Target:	CCKAR
Binding Specificity:	AA 161-200
Reactivity:	Human, Rat, Mouse, Chicken
Host:	Rabbit
Clonality:	Polyclonal
Conjugate:	This CCKAR antibody is un-conjugated
Application:	Western Blotting (WB), ELISA, Immunohistochemistry (Paraffin-embedded Sections) (IHC (p)), Flow Cytometry (FACS), Immunofluorescence (Cultured Cells) (IF (cc)), Immunofluorescence (Paraffin-embedded Sections) (IF (p)), Immunocytochemistry (ICC), Immunohistochemistry (Frozen Sections) (IHC (fro))

Product Details

Immunogen:	KLH conjugated synthetic peptide derived from human CCKAR
Isotype:	IgG
Cross-Reactivity:	Chicken, Human, Mouse, Rat
Predicted Reactivity:	Dog,Cow,Sheep,Pig,Horse
Purification:	Purified by Protein A.

Target Details

Target:	CCKAR
---------	-------

Target Details

Alternative Name:	CCKAR (CCKAR Products)
Background:	<p>Synonyms: CCK-A, CCK1R, CCKRA, CCK1-R, Cholecystokinin receptor type A, CCK-A receptor, CCK-AR, Cholecystokinin-1 receptor, CCKAR</p> <p>Background: Receptor for cholecystokinin. Mediates pancreatic growth and enzyme secretion, smooth muscle contraction of the gall bladder and stomach. Has a 1000-fold higher affinity for CCK rather than for gastrin. It modulates feeding and dopamine-induced behavior in the central and peripheral nervous system. This receptor mediates its action by association with G proteins that activate a phosphatidylinositol-calcium second messenger system.</p>
Gene ID:	886
UniProt:	P32238
Pathways:	Positive Regulation of Peptide Hormone Secretion , Hormone Transport , Feeding Behaviour

Application Details

Application Notes:	WB 1:300-5000 ELISA 1:500-1000 FCM 1:20-100 IHC-P 1:200-400 IHC-F 1:100-500 IF(IHC-P) 1:50-200 IF(IHC-F) 1:50-200 IF(ICC) 1:50-200 ICC 1:100-500
Restrictions:	For Research Use only

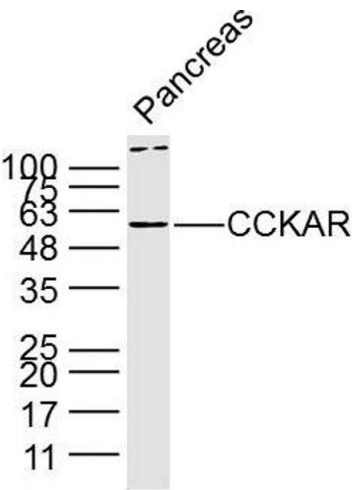
Handling

Format:	Liquid
Concentration:	1 µg/µL
Buffer:	0.01M TBS(pH 7.4) with 1 % BSA, 0.02 % Proclin300 and 50 % Glycerol.
Preservative:	ProClin
Precaution of Use:	This product contains ProClin: a POISONOUS AND HAZARDOUS SUBSTANCE, which should be handled by trained staff only.

Handling

Storage:	4 °C,-20 °C
Storage Comment:	Shipped at 4°C. Store at -20°C for one year. Avoid repeated freeze/thaw cycles.
Expiry Date:	12 months

Images



Western Blotting

Image 1. Lane 1: Mouse pancreas lysates probed with Anti CCKAR Polyclonal Antibody, Unconjugated (bs-11514R) at 1:300 overnight at 4°C. Followed by a conjugated secondary antibody at 1:5000 for 90 min at 37°C.