

Datasheet for ABIN1386216

**anti-Glutamate Receptor 1 antibody (pSer849)**[Go to Product page](#)**2** Images

## Overview

Quantity:	100 µL
Target:	Glutamate Receptor 1 (GLUR1)
Binding Specificity:	pSer849
Reactivity:	Human, Rat, Mouse
Host:	Rabbit
Clonality:	Polyclonal
Conjugate:	This Glutamate Receptor 1 antibody is un-conjugated
Application:	Western Blotting (WB), ELISA, Immunofluorescence (Cultured Cells) (IF (cc)), Immunofluorescence (Paraffin-embedded Sections) (IF (p)), Immunohistochemistry (Paraffin-embedded Sections) (IHC (p)), Immunohistochemistry (Frozen Sections) (IHC (fro))

## Product Details

Immunogen:	KLH conjugated synthetic phosphopeptide derived from human GluR1 around the phosphorylation site of Ser849 [QQ(p-S)IN]
Isotype:	IgG
Cross-Reactivity:	Human, Mouse, Rat
Predicted Reactivity:	Dog,Cow,Sheep,Pig,Horse,Chicken
Purification:	Purified by Protein A.

## Target Details

Target:	Glutamate Receptor 1 (GLUR1)
---------	------------------------------

## Target Details

Alternative Name:	GluR1 ( <a href="#">GLUR1 Products</a> )
Background:	<p>Synonyms: GluR1 phospho Ser849, GluR1 phospho S849, p- GluR1Ser849, p- GluR1S849, GLUR 1, GLUR A, AMPA 1, AMPA selective glutamate receptor 1, GLUH 1, GLUH1, GluR K1, GluR-1, GluR-A, GluR-K1, GLUR1, GLURA , GluRK1, Glutamate receptor 1, Glutamate receptor ionotropic AMPA 1, Gria 1, Gria1 , Gria1, HBGR1, MGC133252.</p> <p>Background: Glutamate receptors are the predominant excitatory neurotransmitter receptors in the mammalian brain and are activated in a variety of normal neurophysiologic processes. These receptors are heteromeric protein complexes with multiple subunits, each possessing transmembrane regions, and all arranged to form a ligand-gated ion channel. The classification of glutamate receptors is based on their activation by different pharmacologic agonists. This gene belongs to a family of alpha-amino-3-hydroxy-5-methyl-4-isoxazole propionate (AMPA) receptors. Alternatively spliced transcript variants encoding different isoforms have been found for this gene. [provided by RefSeq, Jul 2008].</p>
Gene ID:	2890
Pathways:	<a href="#">PI3K-Akt Signaling</a>

## Application Details

Application Notes:	WB 1:300-5000 ELISA 1:500-1000 IHC-P 1:200-400 IHC-F 1:100-500 IF(IHC-P) 1:50-200 IF(IHC-F) 1:50-200 IF(ICC) 1:50-200
Restrictions:	For Research Use only

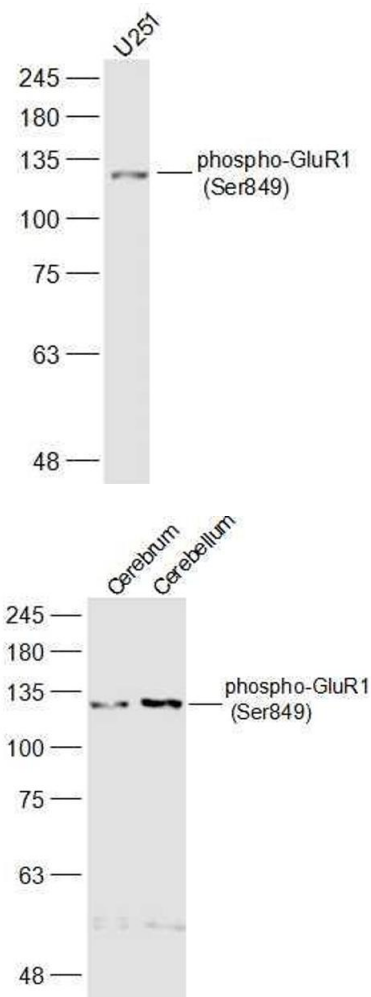
## Handling

Format:	Liquid
Concentration:	1 µg/µL
Buffer:	0.01M TBS( pH 7.4) with 1 % BSA, 0.02 % Proclin300 and 50 % Glycerol.
Preservative:	ProClin
Precaution of Use:	This product contains ProClin: a POISONOUS AND HAZARDOUS SUBSTANCE, which should be

Handling

	handled by trained staff only.
Storage:	4 °C,-20 °C
Storage Comment:	Shipped at 4°C. Store at -20°C for one year. Avoid repeated freeze/thaw cycles.
Expiry Date:	12 months

Images



Western Blotting

**Image 1.** U251 lysates probed with phospho-GluR1 (Ser849) Polyclonal Antibody, Unconjugated at 1:500 dilution and 4°C overnight incubation. Followed by conjugated secondary antibody incubation at 1:10000 for 60 min at 37°C.

Western Blotting

**Image 2.** Lane 1: Mouse Cerebrum lysates Lane 2: Mouse Cerebellum lysates probed with phospho-GluR1 (Ser849) Polyclonal Antibody, Unconjugated at 1:500 dilution and 4°C overnight incubation. Followed by conjugated secondary antibody incubation at 1:10000 for 60 min at 37°C.