



[Go to Product page](#)

Datasheet for ABIN1386255
anti-KLF1/2/4 antibody (AA 279-303)

1 Image

Overview

Quantity:	100 µL
Target:	KLF1/2/4
Binding Specificity:	AA 279-303
Reactivity:	Human, Mouse, Rat
Host:	Rabbit
Clonality:	Polyclonal
Conjugate:	This KLF1/2/4 antibody is un-conjugated
Application:	Western Blotting (WB), Immunofluorescence (Paraffin-embedded Sections) (IF (p)), Immunohistochemistry (Paraffin-embedded Sections) (IHC (p))

Product Details

Immunogen:	KLH conjugated synthetic peptide derived from human KLF1
Isotype:	IgG
Cross-Reactivity:	Human, Mouse, Rat
Purification:	Purified by Protein A.

Target Details

Target:	KLF1/2/4
Abstract:	KLF1/2/4 Products
Background:	Synonyms: EKLF, INLU, CDAN4, HBFQTL6, Krueppel-like factor 1, Erythroid krueppel-like

Target Details

transcription factor, KLF1

Background: Transcription regulator of erythrocyte development that probably serves as a general switch factor during erythropoiesis. Is a dual regulator of fetal-to-adult globin switching. Binds to the CACCC box in the beta-globin gene promoter and acts as a preferential activator of this gene. Furthermore, it binds to the BCL11A promoter and activates expression of BCL11A, which in turn represses the HBG1 and HBG2 genes. This dual activity ensures that, in most adults, fetal hemoglobin levels are low. Able to activate CD44 and AQP1 promoters. When sumoylated, acts as a transcriptional repressor by promoting interaction with CDH2/MI2beta and also represses megakaryocytic differentiation (By similarity).

Gene ID: 10661

UniProt: [Q13351](#)

Application Details

Application Notes: WB 1:300-5000
IHC-P 1:200-400
IF(IHC-P) 1:50-200

Restrictions: For Research Use only

Handling

Format: Liquid

Concentration: 1 µg/µL

Buffer: 0.01M TBS(pH 7.4) with 1 % BSA, 0.02 % Proclin300 and 50 % Glycerol.

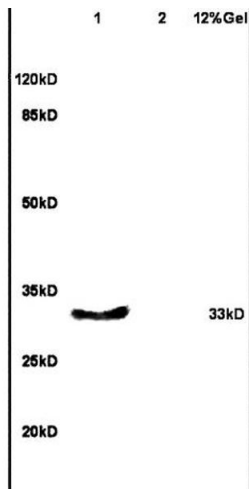
Preservative: ProClin

Precaution of Use: This product contains ProClin: a POISONOUS AND HAZARDOUS SUBSTANCE, which should be handled by trained staff only.

Storage: 4 °C, -20 °C

Storage Comment: Shipped at 4°C. Store at -20°C for one year. Avoid repeated freeze/thaw cycles.

Expiry Date: 12 months



ELISA

Image 1. Lane 1: mouse embryo lysates Lane 2: mouse intestine lysates probed with Anti- EKLF/KLF1, 2, 4 Polyclonal Antibody, Unconjugated (ABIN1386255) at 1:200 in 4 °C. Followed by conjugation to secondary antibody at 1:3000 90min in 37 °C. Predicted band 33kD. Observed band size: 33kD