

Datasheet for ABIN1386293
anti-WT1 antibody (AA 301-400)[Go to Product page](#)

2 Images

1 Publication

Overview

Quantity:	100 µL
Target:	WT1
Binding Specificity:	AA 301-400
Reactivity:	Human, Mouse, Rat, Cow
Host:	Rabbit
Clonality:	Polyclonal
Conjugate:	This WT1 antibody is un-conjugated
Application:	Flow Cytometry (FACS), Western Blotting (WB), ELISA, Immunohistochemistry (Paraffin-embedded Sections) (IHC (p)), Immunofluorescence (Cultured Cells) (IF (cc)), Immunofluorescence (Paraffin-embedded Sections) (IF (p)), Immunohistochemistry (Frozen Sections) (IHC (fro))

Product Details

Immunogen:	KLH conjugated synthetic peptide derived from human Wilms Tumor Protein
Isotype:	IgG
Cross-Reactivity:	Cow, Human, Mouse, Rat
Predicted Reactivity:	Dog,Cow,Sheep,Pig,Chicken
Purification:	Purified by Protein A.

Target Details

Target:	WT1
---------	-----

Target Details

Alternative Name:	Wilms Tumor Protein (WT1 Products)
Background:	<p>Synonyms: GUD, AWT1, WAGR, WT33, NPHS4, WIT-2, EWS-WT1, Wilms tumor protein, WT1</p> <p>Background: Transcription factor that plays an important role in cellular development and cell survival. Regulates the expression of numerous target genes, including EPO. Plays an essential role for development of the urogenital system. Recognizes and binds to the DNA sequence 5'-CGCCCCCGC-3'. It has a tumor suppressor as well as an oncogenic role in tumor formation.</p> <p>Function may be isoform-specific: isoforms lacking the KTS motif may act as transcription factors. Isoforms containing the KTS motif may bind mRNA and play a role in mRNA metabolism or splicing. Isoform 1 has lower affinity for DNA, and can bind RNA.</p>
Molecular Weight:	55kDa
Gene ID:	7490
UniProt:	P19544
Pathways:	Tube Formation

Application Details

Application Notes:	WB 1:300-5000 ELISA 1:500-1000 FCM 1:20-100 IHC-P 1:200-400 IHC-F 1:100-500 IF(IHC-P) 1:50-200 IF(IHC-F) 1:50-200 IF(ICC) 1:50-200
Restrictions:	For Research Use only

Handling

Format:	Liquid
Concentration:	1 µg/µL
Buffer:	0.01M TBS(pH 7.4) with 1 % BSA, 0.02 % Proclin300 and 50 % Glycerol.
Preservative:	ProClin
Precaution of Use:	This product contains ProClin: a POISONOUS AND HAZARDOUS SUBSTANCE, which should be

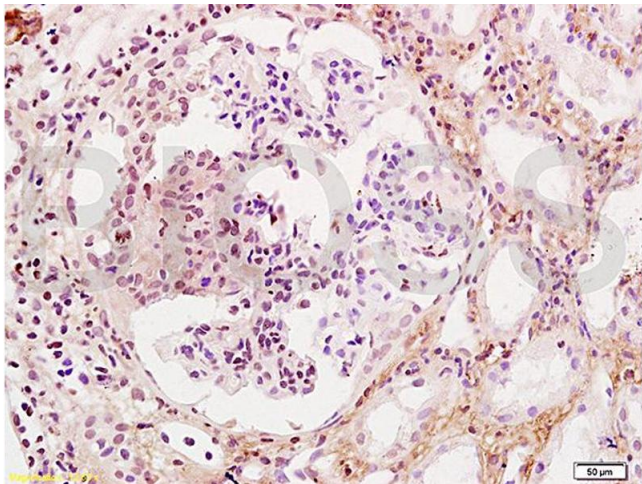
Handling

	handled by trained staff only.
Storage:	4 °C,-20 °C
Storage Comment:	Shipped at 4°C. Store at -20°C for one year. Avoid repeated freeze/thaw cycles.
Expiry Date:	12 months

Publications

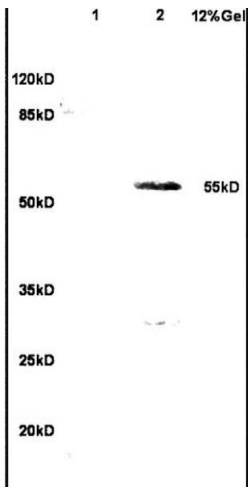
Product cited in:	Xiao, Guan, Nie, Wang, Sun, He, Huang, Zhang, Yang, Wang, Zhao: "Rapamycin promotes podocyte autophagy and ameliorates renal injury in diabetic mice." in: Molecular and cellular biochemistry , Vol. 394, Issue 1-2, pp. 145-54, (2014) (PubMed).
-------------------	---

Images



Immunohistochemistry

Image 1. Formalin-fixed and human kidney tissue labeled with Anti-WT-1/Wilms Tumor Protein Polyclonal Antibody, Unconjugated (ABIN1386293) at 1:200 followed by conjugation to the secondary antibody and DAB staining



SDS-PAGE

Image 2. L1 human colon carcinoma lysates L2 rat brain lysates probed with Anti- WT-1/Wilms Tumor Protein Polyclonal Antibody, Unconjugated (ABIN1386293) at 1:200 in 4 °C. Followed by conjugation to secondary antibody at 1:3000 90min in 37 °C. Predicted band 55kD. Observed band size: 55kD