



[Go to Product page](#)

Datasheet for ABIN1386304

## anti-FAM84A antibody (AA 151-250)

2 Images

1 Publication

### Overview

Quantity:	100 µL
Target:	FAM84A
Binding Specificity:	AA 151-250
Reactivity:	Rat
Host:	Rabbit
Clonality:	Polyclonal
Conjugate:	This FAM84A antibody is un-conjugated
Application:	ELISA, Western Blotting (WB), Immunofluorescence (Cultured Cells) (IF (cc)), Immunofluorescence (Paraffin-embedded Sections) (IF (p)), Immunohistochemistry (Paraffin-embedded Sections) (IHC (p)), Immunohistochemistry (Frozen Sections) (IHC (fro)), Immunocytochemistry (ICC)

### Product Details

Immunogen:	KLH conjugated synthetic peptide derived from human NSE1/FAM84A
Isotype:	IgG
Cross-Reactivity:	Rat
Predicted Reactivity:	Human,Mouse,Dog,Cow,Pig,Chicken,Zebrafish
Purification:	Purified by Protein A.

### Target Details

Target:	FAM84A
---------	--------

## Target Details

---

Alternative Name: Nse1/Fam84a ([FAM84A Products](#))

---

Background: Synonyms: FAM 84A, Family with sequence similarity 84 member A, family with sequence similarity 84, member A, FLJ35392, Neurologic sensory protein 1, Neurological/sensory 1, NSE 1, NSE1, PP11517, Protein FAM84A, Protein NSE1.

Background: FAM84A is a 292 amino acid protein that belongs to the FAM84 family of proteins. Predominantly expressed in testis, FAM84A shares 44 % amino acid identity with the related protein FAM84B. FAM84A localizes to a subcellular membrane region where there is no contact between neighboring cells and is believed to play a role in cell morphology and motility. More specifically, the expression of FAM84A increases cell motility. Two FAM84A isoforms are expressed due to alternative splicing events. Isoform 2 can be phosphorylated on various serine residues and this phosphorylation is associated with cellular morphology. FAM84A is upregulated in colorectal cancer, lung cancer, pancreatic cancer, cholangiocarcinoma and bladder cancer tissues. Via its ability to increase cell motility, FAM84A may contribute to the invasion and metastasis of cancer cells.

---

Gene ID: 3859

---

## Application Details

---

Application Notes: WB 1:300-5000  
ELISA 1:500-1000  
IHC-P 1:200-400  
IHC-F 1:100-500  
IF(IHC-P) 1:50-200  
IF(IHC-F) 1:50-200  
IF(ICC) 1:50-200  
ICC 1:100-500

---

Restrictions: For Research Use only

---

## Handling

---

Format: Liquid

---

Concentration: 1 µg/µL

---

Buffer: 0.01M TBS( pH 7.4) with 1 % BSA, 0.02 % Proclin300 and 50 % Glycerol.

---

Preservative: ProClin

---

## Handling

Precaution of Use: This product contains ProClin: a POISONOUS AND HAZARDOUS SUBSTANCE, which should be handled by trained staff only.

Storage: 4 °C, -20 °C

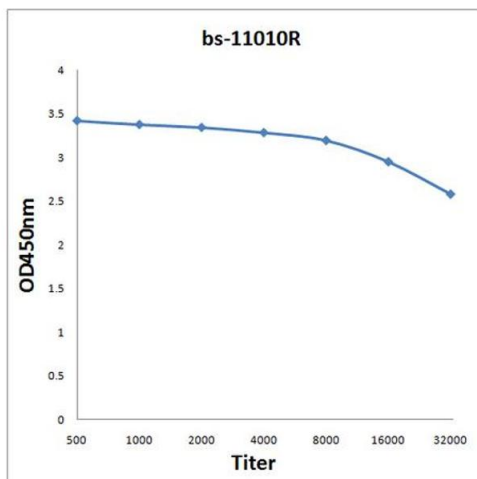
Storage Comment: Shipped at 4°C. Store at -20°C for one year. Avoid repeated freeze/thaw cycles.

Expiry Date: 12 months

## Publications

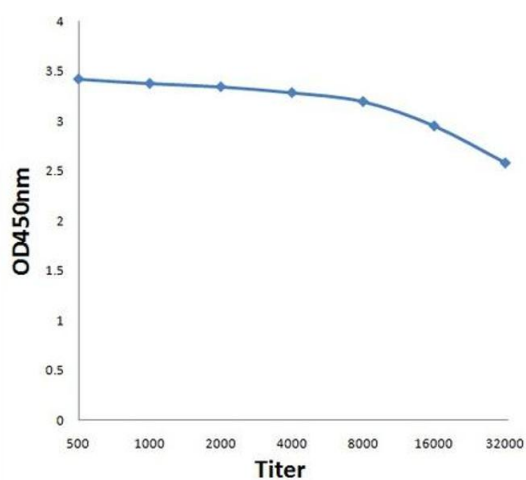
Product cited in: Wang, Xu, Qin, Wang, Ma, Luo, Zhang: "Myocardin-related transcription factor-A is a key regulator in retinoic acid-induced neural-like differentiation of adult bone marrow-derived mesenchymal stem cells." in: **Gene**, Vol. 523, Issue 2, pp. 178-86, (2013) ([PubMed](#)).

## Images



### ELISA

**Image 1.** Antigen: 2 µg/100 µL Primary: Antiserum, 1:500, 1:1000, 1:2000, 1:4000, 1:8000, 1:16000, 1:32000; Secondary: HRP conjugated Rabbit Anti-Goat IgG at 1: 5000; TMB staining Read the data in Microplate Reader by 450nm.



### ELISA

**Image 2.** Antigen: 0.2ug/100ul, Primary: Antiserum, 1:500, 1:1000, 1:2000, 1:4000, 1:8000, 1:16000, 1:32000, Secondary: HRP conjugated Goat-Anti-Rabbit IgG at 1: 5000, TMB staining, Read the data in MicroplateReader by 450nm