

Datasheet for ABIN1386315
anti-Complement C2 antibody (AA 401-500)[Go to Product page](#)

1 Image

Overview

Quantity:	100 µL
Target:	Complement C2
Binding Specificity:	AA 401-500
Reactivity:	Human
Host:	Rabbit
Clonality:	Polyclonal
Conjugate:	This Complement C2 antibody is un-conjugated
Application:	ELISA, Immunocytochemistry (ICC), Immunofluorescence (Cultured Cells) (IF (cc)), Immunofluorescence (Paraffin-embedded Sections) (IF (p)), Immunohistochemistry (Paraffin-embedded Sections) (IHC (p)), Immunohistochemistry (Frozen Sections) (IHC (fro))

Product Details

Immunogen:	KLH conjugated synthetic peptide derived from human Complement C2a fragment
Isotype:	IgG
Predicted Reactivity:	Human, Mouse, Rat, Dog, Pig, Horse
Purification:	Purified by Protein A.

Target Details

Target:	Complement C2
Abstract:	Complement C2 Products

Target Details

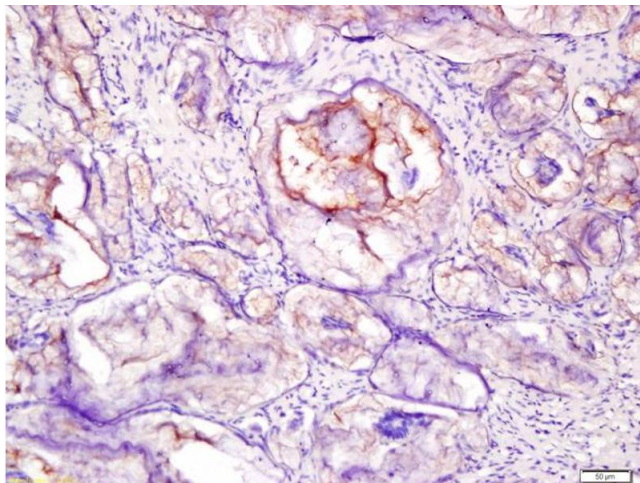
Background:	Synonyms: C02, ARMD14, Complement C2, C3/C5 convertase, C2 Background: Component C2 which is part of the classical pathway of the complement system is cleaved by activated factor C1 into two fragments: C2b and C2a. C2a, a serine protease, then combines with complement factor C4b to generate the C3 or C5 convertase.
Gene ID:	717
UniProt:	P06681

Application Details

Application Notes:	ELISA 1:500-1000 IHC-P 1:200-400 IHC-F 1:100-500 IF(IHC-P) 1:50-200 IF(IHC-F) 1:50-200 IF(ICC) 1:50-200 ICC 1:100-500
Restrictions:	For Research Use only

Handling

Format:	Liquid
Concentration:	1 µg/µL
Buffer:	0.01M TBS(pH 7.4) with 1 % BSA, 0.02 % Proclin300 and 50 % Glycerol.
Preservative:	ProClin
Precaution of Use:	This product contains ProClin: a POISONOUS AND HAZARDOUS SUBSTANCE, which should be handled by trained staff only.
Storage:	4 °C,-20 °C
Storage Comment:	Shipped at 4°C. Store at -20°C for one year. Avoid repeated freeze/thaw cycles.
Expiry Date:	12 months



Immunohistochemistry

Image 1. Formalin-fixed and paraffin embedded human rectal carcinoma labeled with Anti-Complement C2 Polyclonal Antibody, Unconjugated (ABIN1386315) at 1:200 followed by conjugation to the secondary antibody and DAB staining