

Datasheet for ABIN1386329
anti-CXCL12 antibody (AA 24-70)[Go to Product page](#)

1 Image

3 Publications

Overview

Quantity:	100 µL
Target:	CXCL12
Binding Specificity:	AA 24-70
Reactivity:	Rat
Host:	Rabbit
Clonality:	Polyclonal
Conjugate:	This CXCL12 antibody is un-conjugated
Application:	Western Blotting (WB), ELISA, Immunohistochemistry (Paraffin-embedded Sections) (IHC (p)), Immunofluorescence (Paraffin-embedded Sections) (IF (p)), Immunofluorescence (Cultured Cells) (IF (cc)), Immunohistochemistry (Frozen Sections) (IHC (fro))

Product Details

Immunogen:	KLH conjugated synthetic peptide derived from human SDF-1/CXCL12
Isotype:	IgG
Cross-Reactivity:	Rat
Predicted Reactivity:	Human, Mouse, Dog, Pig, Chicken, Guinea Pig
Purification:	Purified by Protein A.

Target Details

Target:	CXCL12
---------	--------

Target Details

Alternative Name:	SDF1 (CXCL12 Products)
Background:	<p>Synonyms: IRH, PBSF, SDF1, TLSF, TPAR1, SCYB12, Stromal cell-derived factor 1, SDF-1, hSDF-1, C-X-C motif chemokine 12, Intercrine reduced in hepatomas, hIRH, Pre-B cell growth-stimulating factor, CXCL12, SDF1A, SDF1B</p> <p>Background: Chemoattractant active on T-lymphocytes, monocytes, but not neutrophils. Activates the C-X-C chemokine receptor CXCR4 to induce a rapid and transient rise in the level of intracellular calcium ions and chemotaxis. Also binds to atypical chemokine receptor ACKR3, which activates the beta-arrestin pathway and acts as a scavenger receptor for SDF-1. SDF-1-beta(3-72) and SDF-1-alpha(3-67) show a reduced chemotactic activity. Binding to cell surface proteoglycans seems to inhibit formation of SDF-1-alpha(3-67) and thus to preserve activity on local sites. Acts as a positive regulator of monocyte migration and a negative regulator of monocyte adhesion via the LYN kinase. Stimulates migration of monocytes and T-lymphocytes through its receptors, CXCR4 and ACKR3, and decreases monocyte adherence to surfaces coated with ICAM-1, a ligand for beta-2 integrins. SDF1A/CXCR4 signaling axis inhibits beta-2 integrin LFA-1 mediated adhesion of monocytes to ICAM-1 through LYN kinase. Inhibits CXCR4-mediated infection by T-cell line-adapted HIV-1. Plays a protective role after myocardial infarction. Induces down-regulation and internalization of ACKR3 expressed in various cells. Has several critical functions during embryonic development, required for B-cell lymphopoiesis, myelopoiesis in bone marrow and heart ventricular septum formation.</p>
Gene ID:	6387
UniProt:	P48061
Pathways:	Regulation of Cell Size , CXCR4-mediated Signaling Events , Negative Regulation of intrinsic apoptotic Signaling

Application Details

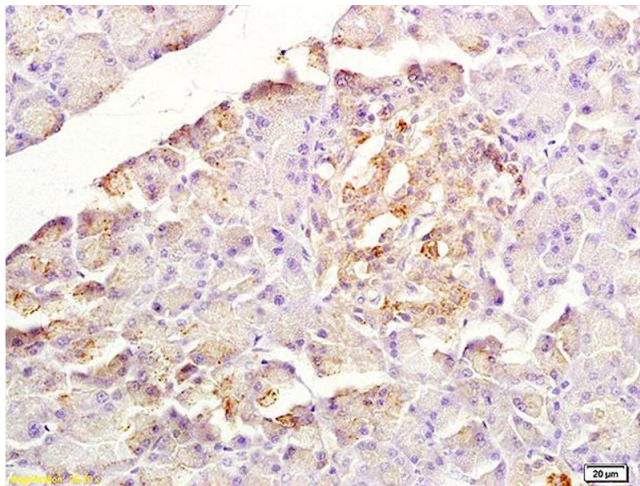
Application Notes:	WB 1:300-5000 ELISA 1:500-1000 IHC-P 1:200-400 IHC-F 1:100-500 IF(IHC-P) 1:50-200 IF(IHC-F) 1:50-200 IF(ICC) 1:50-200
Restrictions:	For Research Use only

Handling

Format:	Liquid
Concentration:	1 µg/µL
Buffer:	0.01M TBS(pH 7.4) with 1 % BSA, 0.02 % Proclin300 and 50 % Glycerol.
Preservative:	ProClin
Precaution of Use:	This product contains ProClin: a POISONOUS AND HAZARDOUS SUBSTANCE, which should be handled by trained staff only.
Storage:	4 °C,-20 °C
Storage Comment:	Shipped at 4°C. Store at -20°C for one year. Avoid repeated freeze/thaw cycles.
Expiry Date:	12 months

Publications

Product cited in:	<p>Wang, Chen, Tang, Jiang, Ji: "AMD3100 Attenuates Matrix Metalloprotease-3 and -9 Expressions and Prevents Cartilage Degradation in a Monosodium Iodo-Acetate-Induced Rat Model of Temporomandibular Osteoarthritis." in: Journal of oral and maxillofacial surgery : official journal of the American Association of Oral and Maxillofacial Surgeons, Vol. 74, Issue 5, pp. 927.e1-927.e13, (2016) (PubMed).</p> <p>Grootaert, da Costa Martins, Bitsch, Pintelon, De Meyer, Martinet, Schrijvers: "Defective autophagy in vascular smooth muscle cells accelerates senescence and promotes neointima formation and atherogenesis." in: Autophagy, (2015) (PubMed).</p> <p>Pei, Zeng, Han, Liao, Zhou, Li, Zhang, Liu, Zhang, Liu, Yao, Xu: "Renal interstitial infiltration and tertiary lymphoid organ neogenesis in IgA nephropathy." in: Clinical journal of the American Society of Nephrology : CJASN, Vol. 9, Issue 2, pp. 255-64, (2014) (PubMed).</p>
-------------------	--



Immunohistochemistry

Image 1. Formalin-fixed and paraffin embedded rat pancreas labeled with Anti-SDF-1/CXCL12 Polyclonal Antibody, Unconjugated (ABIN1386329) at 1:200 followed by conjugation to the secondary antibody and DAB staining