

Datasheet for ABIN1386375
anti-GLDN antibody (AA 365-460)[Go to Product page](#)

4 Images

Overview

Quantity:	100 µL
Target:	GLDN
Binding Specificity:	AA 365-460
Reactivity:	Human, Mouse, Rat
Host:	Rabbit
Clonality:	Polyclonal
Conjugate:	This GLDN antibody is un-conjugated
Application:	Western Blotting (WB), ELISA, Immunofluorescence (Cultured Cells) (IF (cc)), Immunofluorescence (Paraffin-embedded Sections) (IF (p)), Immunocytochemistry (ICC), Immunohistochemistry (Frozen Sections) (IHC (fro)), Immunohistochemistry (Paraffin-embedded Sections) (IHC (p))

Product Details

Immunogen:	KLH conjugated synthetic peptide derived from human Gliomedin/COLM
Isotype:	IgG
Cross-Reactivity:	Human, Mouse, Rat
Predicted Reactivity:	Dog,Cow,Sheep,Pig,Horse
Purification:	Purified by Protein A.

Target Details

Target:	GLDN
---------	------

Target Details

Alternative Name:	Gliomedin (GLDN Products)
Background:	<p>Synonyms: CANCER RELATED GENE LIVER 2, Cancer related gene-Liver 2, CLOM, collomin, Colm gene name, COLM, Colmedin, CRG L2, FLJ23917, Gldn gene name, UNC 112, GLDN_HUMAN.</p> <p>Background: Gliomedin is a 551 amino acid protein encoded by the human gene GLDN. Gliomedin is thought to play a role in the formation of the nodes of Ranvier along myelinated axons. Accumulation of Na⁺ channels at the nodes of Ranvier is a prerequisite for saltatory conduction. In peripheral nerves, clustering of these channels along the axolemma is regulated by myelinating Schwann cells through an unknown mechanism. Gliomedin is a glial ligand for Neurofascin and NrCAM, two axonal immunoglobulin cell adhesion molecules that are associated with Na⁺ channels at the nodes of Ranvier. Gliomedin is expressed by myelinating Schwann cells and accumulates at the edges of each myelin segment during development, where it aligns with the forming nodes. Gliomedin is a single-pass type II membrane protein localized to the nodes of Ranvier and is specifically expressed in spinal cord, brain, placenta and sciatic nerve. It is more abundant in peripheral than central nervous system.</p>

Application Details

Application Notes:	WB 1:300-5000 ELISA 1:500-1000 IHC-P 1:200-400 IHC-F 1:100-500 IF(IHC-P) 1:50-200 IF(IHC-F) 1:50-200 IF(ICC) 1:50-200 ICC 1:100-500
Restrictions:	For Research Use only

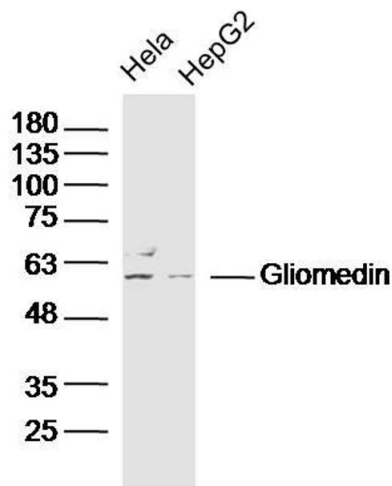
Handling

Format:	Liquid
Concentration:	1 µg/µL
Buffer:	0.01M TBS(pH 7.4) with 1 % BSA, 0.02 % Proclin300 and 50 % Glycerol.
Preservative:	ProClin
Precaution of Use:	This product contains ProClin: a POISONOUS AND HAZARDOUS SUBSTANCE, which should be

Handling

	handled by trained staff only.
Storage:	4 °C,-20 °C
Storage Comment:	Shipped at 4°C. Store at -20°C for one year. Avoid repeated freeze/thaw cycles.
Expiry Date:	12 months

Images



Western Blotting

Image 1. Lane 1: HeLa lysates Lane 2: HepG2 lysates probed with Gliomedin Polyclonal Antibody, Unconjugated at 1:300 dilution and 4°C overnight incubation. Followed by conjugated secondary antibody incubation at 1:10000 for 60 min at 37°C.

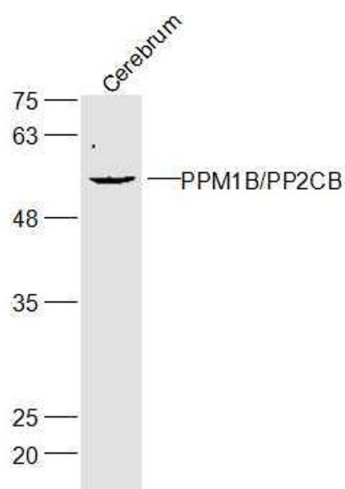
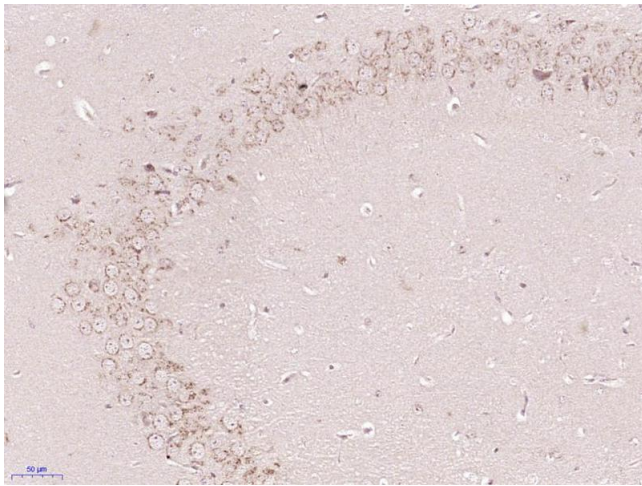


Image 2. Mouse cerebrum lysates probed with Gliomedin Polyclonal Antibody, Unconjugated at 1:300 dilution and 4°C overnight incubation. Followed by conjugated secondary antibody incubation at 1:10000 for 60 min at 37°C.



Immunohistochemistry (Paraffin-embedded Sections)

Image 3. Paraformaldehyde-fixed, paraffin embedded Mouse brain Antigen retrieval by boiling in sodium citrate buffer (pH6.0) for 15min Block endogenous peroxidase by 3% hydrogen peroxide for 20 minutes Blocking buffer (normal goat serum) at 37°C for 30min Antibody incubation with Gliomedin Polyclonal Antibody, Unconjugated at 1:400 overnight at 4°C, DAB staining.

Please check the [product details page](#) for more images. Overall 4 images are available for ABIN1386375.