

Datasheet for ABIN1386483  
**anti-TMED10 antibody (AA 101-200)**[Go to Product page](#)

## 2 Images

## Overview

Quantity:	100 µL
Target:	TMED10
Binding Specificity:	AA 101-200
Reactivity:	Human, Mouse
Host:	Rabbit
Clonality:	Polyclonal
Conjugate:	This TMED10 antibody is un-conjugated
Application:	Western Blotting (WB), ELISA, Immunohistochemistry (Paraffin-embedded Sections) (IHC (p)), Immunofluorescence (Cultured Cells) (IF (cc)), Immunofluorescence (Paraffin-embedded Sections) (IF (p)), Immunohistochemistry (Frozen Sections) (IHC (fro)), Immunocytochemistry (ICC)

## Product Details

Immunogen:	KLH conjugated synthetic peptide derived from human TMP21
Isotype:	IgG
Specificity:	KO-Validated
Cross-Reactivity:	Human, Mouse
Predicted Reactivity:	Rat,Dog,Cow,Chicken,Rabbit
Purification:	Purified by Protein A.

## Target Details

Target:	TMED10
Alternative Name:	TMP21 ( <a href="#">TMED10 Products</a> )
Background:	<p>Synonyms: p23, p24 family protein delta 1, p24delta, p24delta1, S31I125, S31III125, TMED 10, TMED10, Tmp 21 I, Tmp 21, Tmp 21 I, Transmembrane emp24 domain containing protein 10, Transmembrane emp24-like trafficking protein 10 yeast, Transmembrane protein Tmp21, Transmembrane trafficking protein 21kD, 1110014C03Rik, 21 kDa transmembrane trafficking protein, MGC102351, TMEDA_HUMAN.</p> <p>Background: MP21 is a member of the EMP24/GP25L/p24 cargo family of proteins that regulates vesicular trafficking in the early secretory pathway. TMP21 is a ubiquitously expressed single-pass type I membrane protein localizing to the Golgi cisternae and the plasma membrane. It contains one GOLD (Golgi dynamics) domain and participates in protein transport and quality control between the endoplasmic reticulum (ER) and the Golgi complex. In addition, TMP21 is a component of the heteromeric secretase complex (or Presenilin complex) and functions to regulate the ?secretase activity. Two isoforms, namely TMP21-I and TMP21-II, exist for this protein.</p>

## Application Details

Application Notes:	WB 1:300-5000 ELISA 1:500-1000 IHC-P 1:200-400 IHC-F 1:100-500 IF(IHC-P) 1:50-200 IF(IHC-F) 1:50-200 IF(ICC) 1:50-200 ICC 1:100-500
Restrictions:	For Research Use only

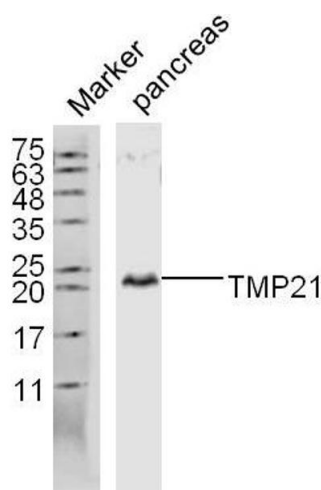
## Handling

Format:	Liquid
Concentration:	1 µg/µL
Buffer:	0.01M TBS( pH 7.4) with 1 % BSA, 0.02 % Proclin300 and 50 % Glycerol.
Preservative:	ProClin

Handling

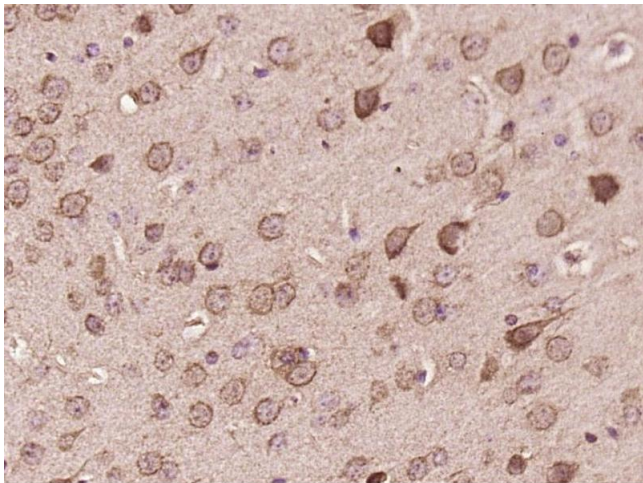
Precaution of Use:	This product contains ProClin: a POISONOUS AND HAZARDOUS SUBSTANCE, which should be handled by trained staff only.
Storage:	4 °C,-20 °C
Storage Comment:	Shipped at 4°C. Store at -20°C for one year. Avoid repeated freeze/thaw cycles.
Expiry Date:	12 months

Images



Western Blotting

**Image 1.** Lane 1: Mouse pancreas lysates probed with TMP21 Polyclonal Antibody, Unconjugated at 1:300 overnight at 4°C. Followed by a conjugated secondary antibody at 1:5000 for 90 min at 37°C.



Immunohistochemistry (Paraffin-embedded Sections)

**Image 2.** Paraformaldehyde-fixed, paraffin embedded mouse brain, Antigen retrieval by boiling in sodium citrate buffer (pH6) for 15min, Block endogenous peroxidase by 3% hydrogen peroxide for 30 minutes, Blocking buffer (normal goat serum) at 37°C for 20min, Antibody incubation with TMP21 Polyclonal Antibody, Unconjugated at 1:200 overnight at 4°C, followed by a conjugated secondary and DAB staining.