

Datasheet for ABIN1386488  
**anti-CTBP1 antibody (pSer422)**

## 2 Images

[Go to Product page](#)

## Overview

Quantity:	100 µL
Target:	CTBP1
Binding Specificity:	pSer422
Reactivity:	Rat, Zebrafish (Danio rerio)
Host:	Rabbit
Clonality:	Polyclonal
Conjugate:	This CTBP1 antibody is un-conjugated
Application:	ELISA, Immunohistochemistry (Paraffin-embedded Sections) (IHC (p)), Immunocytochemistry (ICC), Immunofluorescence (Cultured Cells) (IF (cc)), Immunofluorescence (Paraffin-embedded Sections) (IF (p)), Immunohistochemistry (Frozen Sections) (IHC (fro))

## Product Details

Immunogen:	KLH conjugated synthetic phosphopeptide derived from human CTBP1 around the phosphorylation site of Ser422
Isotype:	IgG
Cross-Reactivity:	Rat, Zebrafish (Danio rerio)
Predicted Reactivity:	Human,Mouse,Dog,Cow,Horse,Chicken
Purification:	Purified by Protein A.

## Target Details

Target:	CTBP1
---------	-------

## Target Details

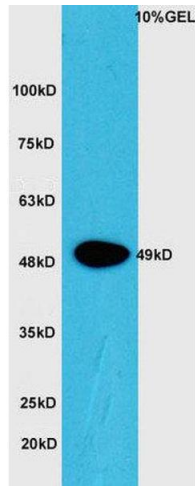
Alternative Name:	CTBP1 ( <a href="#">CTBP1 Products</a> )
Background:	<p>Synonyms: CTBP1 phospho Ser422, p-CTBP1 Ser422, CtBP1 phospho S422, BARS, C terminal binding protein 1, CTBP, CTBP1, MGC104684, CTBP1_HUMAN, C-terminal-binding protein 1, CtBP1.</p> <p>Background: CtBP1 associates in complexes with histone deacetylases (HDAC), the G9a histone methyltransferase, and LSD1 histone demethylase illustrating its role in transcriptional repression. Through its association with centrosomes, CtBP1 appears to also play a role in mitosis and Golgi complex organization.</p>
Pathways:	<a href="#">Retinoic Acid Receptor Signaling Pathway</a>

## Application Details

Application Notes:	ELISA 1:500-1000 IHC-P 1:200-400 IHC-F 1:100-500 IF(IHC-P) 1:50-200 IF(IHC-F) 1:50-200 IF(ICC) 1:50-200 ICC 1:100-500
Restrictions:	For Research Use only

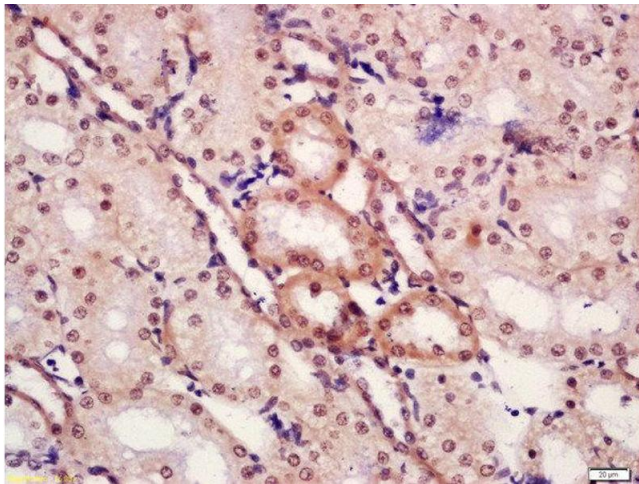
## Handling

Format:	Liquid
Concentration:	1 µg/µL
Buffer:	0.01M TBS( pH 7.4) with 1 % BSA, 0.02 % Proclin300 and 50 % Glycerol.
Preservative:	ProClin
Precaution of Use:	This product contains ProClin: a POISONOUS AND HAZARDOUS SUBSTANCE, which should be handled by trained staff only.
Storage:	4 °C,-20 °C
Storage Comment:	Shipped at 4°C. Store at -20°C for one year. Avoid repeated freeze/thaw cycles.
Expiry Date:	12 months



### Western Blotting

**Image 1.** Lane 1: Mouse intestine lysate probed with Rabbit Anti-CTBP1 (Ser422) Polyclonal Antibody, Unconjugated (ABIN1386488) at 1:300 overnight at 4 °C. Followed by conjugation to secondary antibody at 1:5000 for 90 min at 37 °C.



### Immunohistochemistry (Paraffin-embedded Sections)

**Image 2.** Formalin-fixed and paraffin embedded rat kidney tissue labeled with Anti-CTBP1 (Ser422) Polyclonal Antibody, Unconjugated at 1:300 followed by conjugation to the secondary antibody and DAB staining.