

Datasheet for ABIN1386498
anti-NAB2 antibody (AA 221-320)[Go to Product page](#)

1 Image

Overview

Quantity:	100 µL
Target:	NAB2
Binding Specificity:	AA 221-320
Reactivity:	Mouse
Host:	Rabbit
Clonality:	Polyclonal
Conjugate:	This NAB2 antibody is un-conjugated
Application:	Western Blotting (WB), ELISA, Immunohistochemistry (Paraffin-embedded Sections) (IHC (p))

Product Details

Immunogen:	KLH conjugated synthetic peptide derived from human NAB2
Isotype:	IgG
Cross-Reactivity:	Mouse
Predicted Reactivity:	Human,Rat,Dog,Cow,Sheep,Pig,Horse,Rabbit
Purification:	Purified by Protein A.

Target Details

Target:	NAB2
Alternative Name:	NAB2/MADER (NAB2 Products)
Background:	Synonyms: EGR 1 binding protein 2, EGR-1-binding protein 2, EGR1 binding protein 2, MADER,

Target Details

Melanoma associated delayed early response protein, Melanoma-associated delayed early response protein, MGC75085, Nab 2, nab2, NAB2_HUMAN, NGFI A binding protein 2 EGR1 binding protein 2, NGFI A binding protein 2, NGFI-A-binding protein 2, Protein MADER.

Background: Transcriptional control is in part regulated by interactions between DNA-bound transcription factors, such as Egr-1/NGFI-A, and coregulatory proteins, such as NAB (for NGFI-A-binding proteins). The evolutionarily conserved NAB proteins, NAB1 and NAB2 are corepressors of EGF-1/NGFI-A. Both NAB1 and NAB2 contain an amino terminal NAB conserved domain 1 (NCB1), which is required for binding NGFI-A, and a carboxy terminal NCD2 domain, which is responsible for the repressor function of NAB proteins. NAB2 is principally localized in the nucleus and may play a role in the downregulation of NGFI-A activity as well as in controlling fundamental processes such as cell division, differentiation and apoptosis. NAB2 localizes to chromosome 12q13.3-14.1, a region that is rearranged in several solid tumors, lipomas, and liposarcomas.

Application Details

Application Notes:	WB 1:300-5000 ELISA 1:500-1000 IHC-P 1:200-400
Restrictions:	For Research Use only

Handling

Format:	Liquid
Concentration:	1 µg/µL
Buffer:	0.01M TBS(pH 7.4) with 1 % BSA, 0.02 % Proclin300 and 50 % Glycerol.
Preservative:	ProClin
Precaution of Use:	This product contains ProClin: a POISONOUS AND HAZARDOUS SUBSTANCE, which should be handled by trained staff only.
Storage:	4 °C,-20 °C
Storage Comment:	Shipped at 4°C. Store at -20°C for one year. Avoid repeated freeze/thaw cycles.
Expiry Date:	12 months

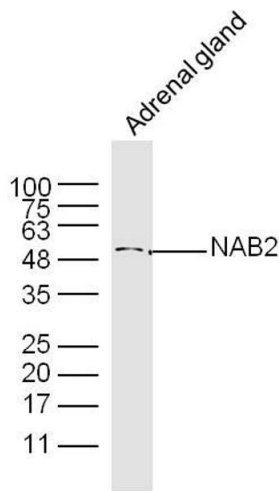


Image 1. Mouse adrenal Gland lysates probed with NAB2 Polyclonal Antibody, Unconjugated at 1:300 dilution and 4°C overnight incubation. Followed by conjugated secondary antibody incubation at 1:10000 for 60 min at 37°C.