

Datasheet for ABIN1386573
anti-SGSH antibody (AA 301-388)[Go to Product page](#)

1 Image

Overview

Quantity:	100 µL
Target:	SGSH
Binding Specificity:	AA 301-388
Reactivity:	Rat
Host:	Rabbit
Clonality:	Polyclonal
Conjugate:	This SGSH antibody is un-conjugated
Application:	Western Blotting (WB), ELISA, Immunofluorescence (Cultured Cells) (IF (cc)), Immunofluorescence (Paraffin-embedded Sections) (IF (p)), Immunocytochemistry (ICC), Immunohistochemistry (Paraffin-embedded Sections) (IHC (p)), Immunohistochemistry (Frozen Sections) (IHC (fro))

Product Details

Immunogen:	KLH conjugated synthetic peptide derived from human Sulphamidase
Isotype:	IgG
Cross-Reactivity:	Rat
Predicted Reactivity:	Human,Mouse,Dog
Purification:	Purified by Protein A.

Target Details

Target:	SGSH
---------	------

Target Details

Alternative Name:	SGSH/Sulphamidase (SGSH Products)
Background:	<p>Synonyms: HSS, SFMD, MPS3A, N-sulphoglucosamine sulphohydrolase, Sulfoglucosamine sulfamidase, Sulphamidase, SGSH</p> <p>Background: Sulfatases are enzymes that hydrolyse a diverse range of sulfate esters. Deficiency of lysosomal sulfatases leads to human diseases characterized by the accumulation of either GAGs (glycosaminoglycans) or sulfolipids. Sulfamidase, also known as HSS, SFMD, MPS3A or SGSH, is a 502 amino acid lysosome that belongs to the sulfatase family. It has been suggested that sulfamidase may be involved in the lysosomal degradation of heparan sulfate. Defects in the gene encoding sulfamidase are the cause of Sanfilippo syndrome A, an autosomal recessive lysosomal storage disease caused by impaired degradation of heparan sulfate. Sanfilippo syndrome A is characterized by severe central nervous system degeneration but relatively mild somatic manifestations.</p>
Gene ID:	6448
UniProt:	P51688
Pathways:	Glycosaminoglycan Metabolic Process

Application Details

Application Notes:	WB 1:300-5000 ELISA 1:500-1000 IHC-P 1:200-400 IHC-F 1:100-500 IF(IHC-P) 1:50-200 IF(IHC-F) 1:50-200 IF(ICC) 1:50-200 ICC 1:100-500
Restrictions:	For Research Use only

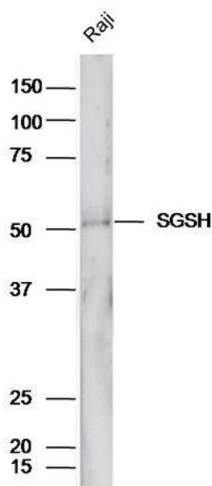
Handling

Format:	Liquid
Concentration:	1 µg/µL
Buffer:	0.01M TBS(pH 7.4) with 1 % BSA, 0.02 % Proclin300 and 50 % Glycerol.
Preservative:	ProClin

Handling

Precaution of Use:	This product contains ProClin: a POISONOUS AND HAZARDOUS SUBSTANCE, which should be handled by trained staff only.
Storage:	4 °C,-20 °C
Storage Comment:	Shipped at 4°C. Store at -20°C for one year. Avoid repeated freeze/thaw cycles.
Expiry Date:	12 months

Images



Western Blotting

Image 1. Raji cell lysates probed with Anti-SGSH/Sulphamidase Polyclonal Antibody, Unconjugated (ABIN1386573) at 1:300 in 4°C. Followed by conjugation to secondary antibody at 1:3000 90min in 37°C.