



[Go to Product page](#)

Datasheet for ABIN1386609
anti-NPDC1 antibody (AA 75-180)

1 Image

Overview

Quantity:	100 µL
Target:	NPDC1
Binding Specificity:	AA 75-180
Reactivity:	Mouse
Host:	Rabbit
Clonality:	Polyclonal
Conjugate:	This NPDC1 antibody is un-conjugated
Application:	Western Blotting (WB), ELISA, Immunofluorescence (Paraffin-embedded Sections) (IF (p)), Immunofluorescence (Cultured Cells) (IF (cc)), Immunohistochemistry (Paraffin-embedded Sections) (IHC (p)), Immunohistochemistry (Frozen Sections) (IHC (fro)), Immunocytochemistry (ICC)

Product Details

Immunogen:	KLH conjugated synthetic peptide derived from human NPDC1
Isotype:	IgG
Cross-Reactivity:	Mouse
Predicted Reactivity:	Human,Rat
Purification:	Purified by Protein A.

Target Details

Target:	NPDC1
---------	-------

Target Details

Alternative Name: NPDC1 ([NPDC1 Products](#))

Background: Synonyms: AI314472, CAB1, Neural proliferation differentiation and control protein 1, NPDC-1, NPDC1, NPDC1_HUMAN.

Background: NPDC-1 (Neural Proliferation Differentiation and Control-1) is expressed in neurons once they have stopped dividing and begun to differentiate. NPDC-1 is transported from the Golgi apparatus via vesicles before becoming internalized by endosomes at the cell membrane. NPDC-1 interacts with Cdk2, D-type cyclins, and the transcription factor E2F1. This interaction can lead to an increased replication time, and might have implications in final neural differentiation and apoptosis. NPDC-1 has been shown to colocalize with synaptic vesicle proteins: synaptophysin, synaptobrevin 2, and Rab3 GEP (Rab3 GTP/GDP exchange protein). One function of NPDC-1 is to regulate retinoic acid-mediated events by directly interacting with retinoid receptors. The amino acid sequence of NPDC-1 is highly conserved between mouse, rat, and human.

Application Details

Application Notes: WB 1:300-5000
ELISA 1:500-1000
IHC-P 1:200-400
IHC-F 1:100-500
IF(IHC-P) 1:50-200
IF(IHC-F) 1:50-200
IF(ICC) 1:50-200
ICC 1:100-500

Restrictions: For Research Use only

Handling

Format: Liquid

Concentration: 1 µg/µL

Buffer: 0.01M TBS(pH 7.4) with 1 % BSA, 0.02 % Proclin300 and 50 % Glycerol.

Preservative: ProClin

Precaution of Use: This product contains ProClin: a POISONOUS AND HAZARDOUS SUBSTANCE, which should be handled by trained staff only.

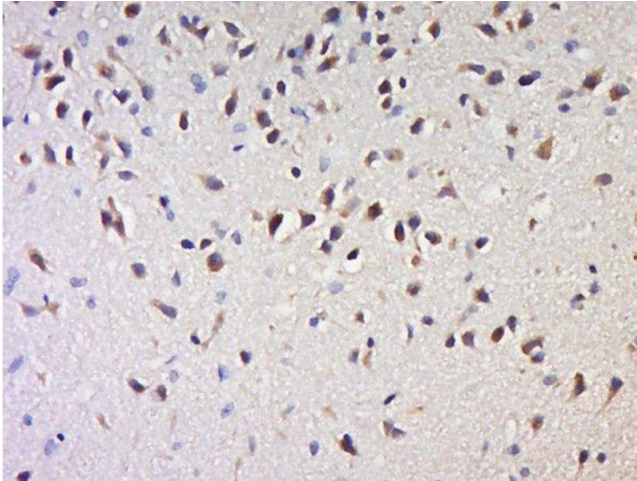
Handling

Storage: 4 °C,-20 °C

Storage Comment: Shipped at 4°C. Store at -20°C for one year. Avoid repeated freeze/thaw cycles.

Expiry Date: 12 months

Images



Immunohistochemistry (Paraffin-embedded Sections)

Image 1. Paraformaldehyde-fixed, paraffin embedded rat brain tissue, Antigen retrieval by boiling in sodium citrate buffer(pH6) for 15min, Block endogenous peroxidase by 3% hydrogen peroxide for 30 minutes, Blocking buffer (normal goat serum) at 37°C for 20min, Antibody incubation with Rabbit Anti-NPDC1 Polyclonal Antibody, Unconjugated at 1:500 overnight at 4°C, followed by a conjugated secondary and DAB staining