

Datasheet for ABIN1386670
anti-HTR1F antibody (AA 1-100)

2 Images

[Go to Product page](#)

Overview

Quantity:	100 µL
Target:	HTR1F
Binding Specificity:	AA 1-100
Reactivity:	Human, Rat, Mouse
Host:	Rabbit
Clonality:	Polyclonal
Conjugate:	This HTR1F antibody is un-conjugated
Application:	Western Blotting (WB), Immunohistochemistry (Paraffin-embedded Sections) (IHC (p)), ELISA, Immunofluorescence (Cultured Cells) (IF (cc)), Immunofluorescence (Paraffin-embedded Sections) (IF (p)), Immunocytochemistry (ICC), Immunohistochemistry (Frozen Sections) (IHC (fro))

Product Details

Immunogen:	KLH conjugated synthetic peptide derived from human 5HT1F Receptor/SR-1F
Isotype:	IgG
Cross-Reactivity:	Human, Mouse, Rat
Predicted Reactivity:	Dog,Cow,Sheep,Pig,Rabbit
Purification:	Purified by Protein A.

Target Details

Target:	HTR1F
---------	-------

Target Details

Alternative Name: 5HT1F Receptor/SR-1F ([HTR1F Products](#))

Background: Synonyms: 5 HT 1F, 5 HT1F, 5 hydroxytryptamine serotonin receptor 1F, 5 hydroxytryptamine 1F receptor, 5 hydroxytryptamine receptor 1E beta, 5 hydroxytryptamine receptor 1F, 5 hydroxytryptamine serotonin receptor 1E beta, 5 hydroxytryptamine serotonin receptor 1F, 5HT 1F, 5HT1F, HTR 1F, HTR1EB, HTR1EL, HTR1F, MR 77, MR77, Serotonin receptor 1E beta, Serotonin receptor gene, 5HT1F_HUMAN.

Background: The members of the G-protein-coupled receptor family are distinguished by their slow transmitting response to ligand binding. These seven transmembrane proteins include the adrenergic, serotonin and dopamine receptors. The effect of the signaling molecule can be excitatory or inhibitory depending on the type of receptor to which it binds. b-adrenergic bound to adrenaline activates adenylyl cyclase, while a2-adrenergic receptor bound to adrenaline inhibits adenylyl cyclase. Like the a2-adrenergic receptor, serotonin receptor functions are also mediated by G proteins that inhibit the activity of adenylyl cyclase. The serotonin receptors have been classified into several categories, designated SR-17 (5HT17). Subtypes within the SR-1 group include SR-1A, -1B, -1D, -1E and -1F.

Pathways: [JAK-STAT Signaling](#)

Application Details

Application Notes: WB 1:300-5000
ELISA 1:500-1000
IHC-P 1:200-400
IHC-F 1:100-500
IF(IHC-P) 1:50-200
IF(IHC-F) 1:50-200
IF(ICC) 1:50-200
ICC 1:100-500

Restrictions: For Research Use only

Handling

Format: Liquid

Concentration: 1 µg/µL

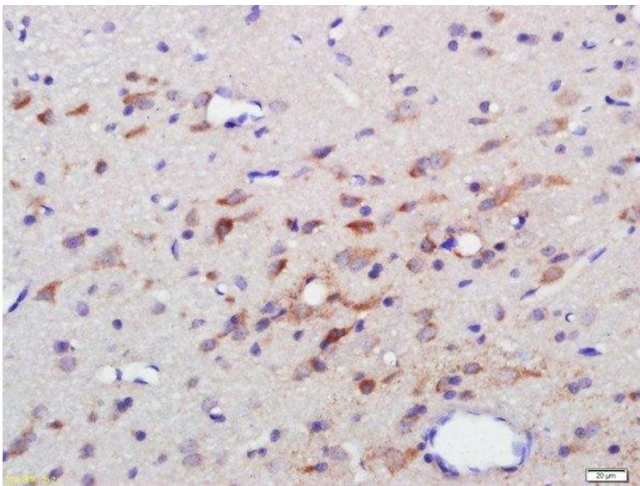
Buffer: 0.01M TBS(pH 7.4) with 1 % BSA, 0.02 % Proclin300 and 50 % Glycerol.

Preservative: ProClin

Handling

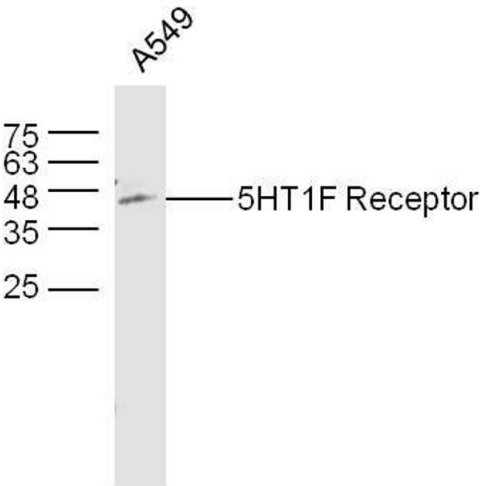
Precaution of Use:	This product contains ProClin: a POISONOUS AND HAZARDOUS SUBSTANCE, which should be handled by trained staff only.
Storage:	4 °C,-20 °C
Storage Comment:	Shipped at 4°C. Store at -20°C for one year. Avoid repeated freeze/thaw cycles.
Expiry Date:	12 months

Images



Immunohistochemistry (Paraffin-embedded Sections)

Image 1. Paraformaldehyde-fixed, paraffin embedded rat brain, Antigen retrieval by boiling in sodium citrate buffer (pH6) for 15min, Block endogenous peroxidase by 3% hydrogen peroxide for 30 minutes, Blocking buffer (normal goat serum) at 37°C for 20min, Antibody incubation with 5HT1F Receptor/SR-1F Polyclonal Antibody, Unconjugated (at 1:500 overnight at 4°C, followed by a conjugated secondary and DAB staining.



Western Blotting

Image 2. A549 (hu) lysates probed with 5HT1F Receptor/SR-1F Polyclonal Antibody, unconjugated at 1:300 overnight at 4°C followed by a conjugated secondary antibody at 1:10000 for 60 minutes at 37°C.