

Datasheet for ABIN1386751  
**anti-CPSF4 antibody (AA 81-180)**

## 2 Images

[Go to Product page](#)

## Overview

Quantity:	100 µL
Target:	CPSF4
Binding Specificity:	AA 81-180
Reactivity:	Human, Mouse
Host:	Rabbit
Clonality:	Polyclonal
Conjugate:	This CPSF4 antibody is un-conjugated
Application:	Western Blotting (WB), ELISA, Immunohistochemistry (Frozen Sections) (IHC (fro)), Immunohistochemistry (Paraffin-embedded Sections) (IHC (p))

## Product Details

Immunogen:	KLH conjugated synthetic peptide derived from human CPSF4
Isotype:	IgG
Cross-Reactivity:	Human, Mouse
Predicted Reactivity:	Rat,Dog,Cow,Pig,Horse,Chicken,Rabbit
Purification:	Purified by Protein A.

## Target Details

Target:	CPSF4
Alternative Name:	CPSF4 ( <a href="#">CPSF4 Products</a> )

## Target Details

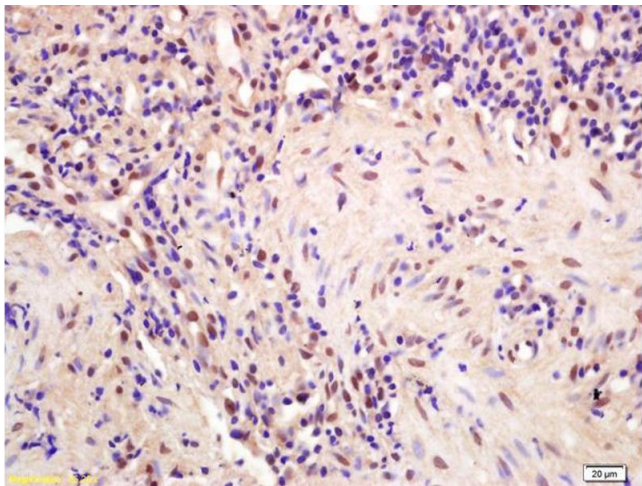
Background:	Synonyms: NAR, NEB1, CPSF30, Cleavage and polyadenylation specificity factor subunit 4, Cleavage and polyadenylation specificity factor 30 kDa subunit, CPSF 30 kDa subunit, NS1 effector domain-binding protein 1, Neb-1, No arches homolog, CPSF4 Background: Component of the cleavage and polyadenylation specificity factor (CPSF) complex that play a key role in pre-mRNA 3'-end formation, recognizing the AAUAAA signal sequence and interacting with poly(A) polymerase and other factors to bring about cleavage and poly(A) addition. CPSF4 binds RNA polymers with a preference for poly(U).
Gene ID:	10898
UniProt:	<a href="#">O95639</a>

## Application Details

Application Notes:	WB 1:300-5000 ELISA 1:500-1000 IHC-P 1:200-400 IHC-F 1:100-500
Restrictions:	For Research Use only

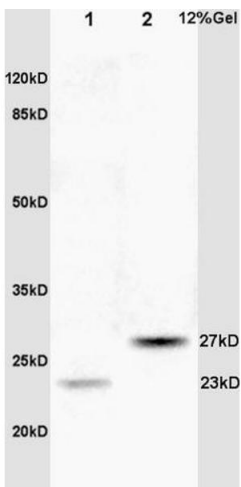
## Handling

Format:	Liquid
Concentration:	1 µg/µL
Buffer:	0.01M TBS( pH 7.4) with 1 % BSA, 0.02 % Proclin300 and 50 % Glycerol.
Preservative:	ProClin
Precaution of Use:	This product contains ProClin: a POISONOUS AND HAZARDOUS SUBSTANCE, which should be handled by trained staff only.
Storage:	4 °C,-20 °C
Storage Comment:	Shipped at 4°C. Store at -20°C for one year. Avoid repeated freeze/thaw cycles.
Expiry Date:	12 months



### Immunohistochemistry

**Image 1.** Formalin-fixed and paraffin embedded human gastric carcinoma labeled with Anti-CPSF4/CPSF30 Polyclonal Antibody, Unconjugated (ABIN1386751) at 1:200 followed by conjugation to the secondary antibody and DAB staining



### SDS-PAGE

**Image 2.** Lane 1: rat brain lysates Lane 2: human colon carcinoma lysates probed with Anti CPSF4/CPSF30 Polyclonal Antibody, Unconjugated (ABIN1386751) at 1:200 in 4 °C. Followed by conjugation to secondary antibody at 1:3000 90min in 37 °C. Predicted band 27kD. Observed band size: 23kD, 27kD.