

Datasheet for ABIN1386771
anti-CD1d1 antibody (AA 165-270)[Go to Product page](#)

2 Images

Overview

Quantity:	100 µL
Target:	CD1d1 (CD1D1)
Binding Specificity:	AA 165-270
Reactivity:	Mouse
Host:	Rabbit
Clonality:	Polyclonal
Conjugate:	This CD1d1 antibody is un-conjugated
Application:	Flow Cytometry (FACS), Western Blotting (WB), Immunohistochemistry (Paraffin-embedded Sections) (IHC (p)), ELISA

Product Details

Immunogen:	KLH conjugated synthetic peptide derived from mouse CD1d1
Isotype:	IgG
Cross-Reactivity:	Mouse
Predicted Reactivity:	Rat
Purification:	Purified by Protein A.

Target Details

Target:	CD1d1 (CD1D1)
Alternative Name:	CD1d1 (CD1D1 Products)

Target Details

Background:	Synonyms: Cd1a, Cd1d, CD1.1, Ly-38, AI747460, Antigen-presenting glycoprotein CD1d1, CD1d.1, Cd1d1 Background: Antigen-presenting protein that binds self and non-self glycolipids and presents them to T-cell receptors on natural killer T-cells.
-------------	--

Gene ID:	12479
----------	-------

UniProt:	P11609
----------	------------------------

Application Details

Application Notes:	WB 1:300-5000 ELISA 1:500-1000 FCM 1:20-100 IHC-P 1:200-400
--------------------	--

Restrictions:	For Research Use only
---------------	-----------------------

Handling

Format:	Liquid
---------	--------

Concentration:	1 µg/µL
----------------	---------

Buffer:	0.01M TBS(pH 7.4) with 1 % BSA, 0.02 % Proclin300 and 50 % Glycerol.
---------	---

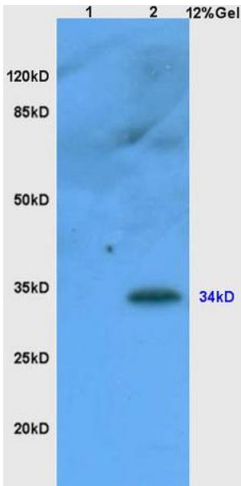
Preservative:	ProClin
---------------	---------

Precaution of Use:	This product contains ProClin: a POISONOUS AND HAZARDOUS SUBSTANCE, which should be handled by trained staff only.
--------------------	--

Storage:	4 °C,-20 °C
----------	-------------

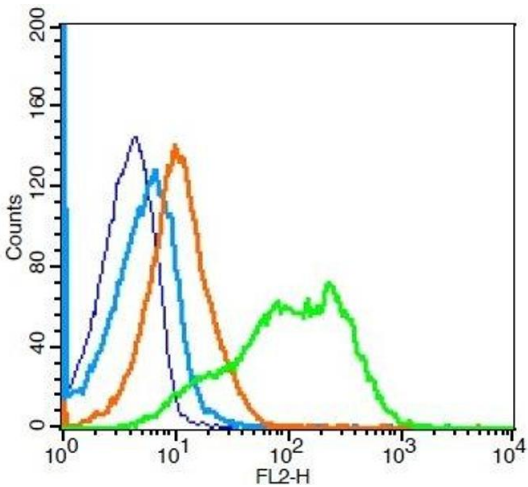
Storage Comment:	Shipped at 4°C. Store at -20°C for one year. Avoid repeated freeze/thaw cycles.
------------------	---

Expiry Date:	12 months
--------------	-----------



SDS-PAGE

Image 1. Lane 1: mouse liver lysates Lane 2: mouse thymus lysates probed with Anti CD1A Polyclonal Antibody, Unconjugated (ABIN1386771) at 1:200 in 4 °C. Followed by conjugation to secondary antibody at 1:3000 90min in 37 °C. Predicted band 34kD. Observed band size: 34kD



Flow Cytometry

Image 2. Mouse splenocytes probed with CD1d1 Polyclonal Antibody, Unconjugated at 1:100 for 30 minutes followed by incubation with a PE Conjugated secondary (green) for 30 minutes compared to control cells (blue), secondary only (light blue) and isotype control (orange).