



[Go to Product page](#)

Datasheet for ABIN1386819
anti-SKP1 antibody (AA 81-163)

1 Image

Overview

Quantity:	100 µL
Target:	SKP1
Binding Specificity:	AA 81-163
Reactivity:	Mouse, Rat
Host:	Rabbit
Clonality:	Polyclonal
Conjugate:	This SKP1 antibody is un-conjugated
Application:	Western Blotting (WB), ELISA, Immunofluorescence (Cultured Cells) (IF (cc)), Immunohistochemistry (Paraffin-embedded Sections) (IHC (p)), Immunofluorescence (Paraffin-embedded Sections) (IF (p)), Immunohistochemistry (Frozen Sections) (IHC (fro))

Product Details

Immunogen:	KLH conjugated synthetic peptide derived from human SKP1
Isotype:	IgG
Cross-Reactivity:	Mouse, Rat
Predicted Reactivity:	Human, Sheep
Purification:	Purified by Protein A.

Target Details

Target:	SKP1
---------	------

Target Details

Alternative Name: SKP1 ([SKP1 Products](#))

Background: Synonyms: Cyclin A/CDK2 associated p19, Cyclin A/CDK2 associated protein p19, Cyclin-A/CDK2-associated protein p19, EMC 19, EMC19, OCP 2, OCP II, OCP II protein, OCP-2, OCP-II, OCP2, OCP2, organ of Corti protein 2, Organ of Corti protein II, p19A, p19skp1, RNA polymerase II elongation factor like protein, RNA polymerase II elongation factor like protein OCP2, RNA polymerase II elongation factor-like protein, S phase kinase associated protein 1, S phase kinase associated protein 1A, S phase kinase associated protein 1A p19A, S-phase kinase-associated protein 1, SIII, Skp 1, SKP 1A, skp1, SKP1_HUMAN, SKP1A, TCEB1L, Transcription elongation factor B SIII polypeptide 1 like, Transcription Elongation Factor B 1 like, Transcription Elongation Factor B 1-like, Transcription elongation factor B, Transcription elongation factor B SIII polypeptide 1 like.

Background: Essential component of the SCF (SKP1-CUL1-F-box protein) ubiquitin ligase complex, which mediates the ubiquitination of proteins involved in cell cycle progression, signal transduction and transcription. In the SCF complex, serves as an adapter that links the F-box protein to CUL1. SCF(BTRC) mediates the ubiquitination of NFKBIA at 'Lys-21' and 'Lys-22', the degradation frees the associated NFKB1-RELA dimer to translocate into the nucleus and to activate transcription. SCF(Cyclin F) directs ubiquitination of CP110.

Gene ID: 6500

Pathways: [Cell Division Cycle](#), [Hedgehog Signaling](#), [Mitotic G1-G1/S Phases](#)

Application Details

Application Notes: WB 1:300-5000
ELISA 1:500-1000
IHC-P 1:200-400
IHC-F 1:100-500
IF(IHC-P) 1:50-200
IF(IHC-F) 1:50-200
IF(ICC) 1:50-200

Restrictions: For Research Use only

Handling

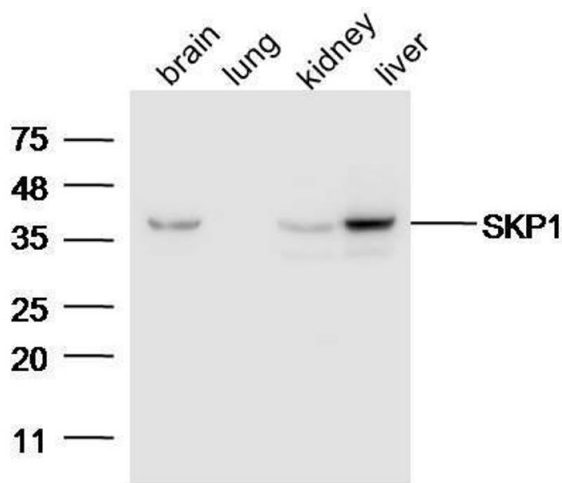
Format: Liquid

Concentration: 1 µg/µL

Handling

Buffer:	0.01M TBS(pH 7.4) with 1 % BSA, 0.02 % Proclin300 and 50 % Glycerol.
Preservative:	ProClin
Precaution of Use:	This product contains ProClin: a POISONOUS AND HAZARDOUS SUBSTANCE, which should be handled by trained staff only.
Storage:	4 °C,-20 °C
Storage Comment:	Shipped at 4°C. Store at -20°C for one year. Avoid repeated freeze/thaw cycles.
Expiry Date:	12 months

Images



Western Blotting

Image 1. Lane 1: Mouse brain lysates Lane 2: Mouse lung
Lane 3: Mouse Kidney Lane 4: Mouse Liver probed with Anti-SKP1 Polyclonal Antibody, Unconjugated at 1:5000 for 90 min at 37°C.