



[Go to Product page](#)

Datasheet for ABIN1386843
anti-APLP1 antibody (AA 1-100)

1 Image

Overview

| | |
|----------------------|---|
| Quantity: | 100 µL |
| Target: | APLP1 |
| Binding Specificity: | AA 1-100 |
| Reactivity: | Mouse |
| Host: | Rabbit |
| Clonality: | Polyclonal |
| Conjugate: | This APLP1 antibody is un-conjugated |
| Application: | Western Blotting (WB), ELISA, Immunofluorescence (Cultured Cells) (IF (cc)), Immunofluorescence (Paraffin-embedded Sections) (IF (p)), Immunohistochemistry (Paraffin-embedded Sections) (IHC (p)), Immunohistochemistry (Frozen Sections) (IHC (fro)), Immunocytochemistry (ICC) |

Product Details

| | |
|-----------------------|---|
| Immunogen: | KLH conjugated synthetic peptide derived from human APLP1 |
| Isotype: | IgG |
| Cross-Reactivity: | Mouse |
| Predicted Reactivity: | Human,Rat,Dog,Cow,Sheep,Horse |
| Purification: | Purified by Protein A. |

Target Details

| | |
|---------|-------|
| Target: | APLP1 |
|---------|-------|

Target Details

Alternative Name: [APLP1 \(APLP1 Products\)](#)

Background: Synonyms: AMYLOID BETA A4 PRECURSOR-LIKE PROTEIN 1, AMYLOID PRECURSOR-LIKE PROTEIN, Amyloid-like protein 1 precursor, APLP 1, APLP, APLP-1, Aplp1, APLP1_HUMAN, C30. Background: May play a role in postsynaptic function. The C-terminal gamma-secretase processed fragment, ALID1, activates transcription activation through APBB1 (Fe65) binding (By similarity). Couples to JIP signal transduction through C-terminal binding. May interact with cellular G-protein signaling pathways. Can regulate neurite outgrowth through binding to components of the extracellular matrix such as heparin and collagen I. The gamma-CTF peptide, C30, is a potent enhancer of neuronal apoptosis.

Gene ID: 333

Pathways: [cAMP Metabolic Process](#)

Application Details

Application Notes: WB 1:300-5000
ELISA 1:500-1000
IHC-P 1:200-400
IHC-F 1:100-500
IF(IHC-P) 1:50-200
IF(IHC-F) 1:50-200
IF(ICC) 1:50-200
ICC 1:100-500

Restrictions: For Research Use only

Handling

Format: Liquid

Concentration: 1 µg/µL

Buffer: 0.01M TBS(pH 7.4) with 1 % BSA, 0.02 % Proclin300 and 50 % Glycerol.

Preservative: ProClin

Precaution of Use: This product contains ProClin: a POISONOUS AND HAZARDOUS SUBSTANCE, which should be handled by trained staff only.

Storage: 4 °C, -20 °C

Handling

Storage Comment: Shipped at 4°C. Store at -20°C for one year. Avoid repeated freeze/thaw cycles.

Expiry Date: 12 months

Images

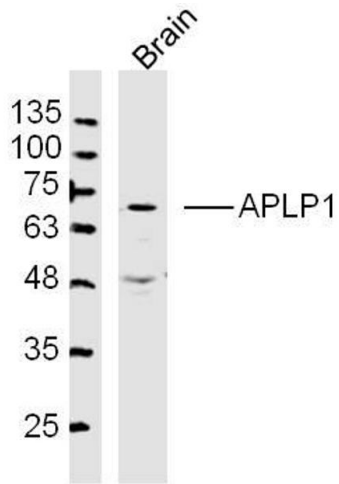


Image 1. Mouse Brain lysates probed with APLP1 Polyclonal Antibody, Unconjugated at 1:300 dilution and 4°C overnight incubation. Followed by conjugated secondary antibody incubation at 1:10000 for 60 min at 37°C.