

Datasheet for ABIN1386910
anti-DVL2 antibody (pThr224)[Go to Product page](#)

1 Image

Overview

Quantity:	100 µL
Target:	DVL2
Binding Specificity:	pThr224
Reactivity:	Human, Mouse, Rat
Host:	Rabbit
Clonality:	Polyclonal
Conjugate:	This DVL2 antibody is un-conjugated
Application:	Western Blotting (WB), Immunofluorescence (Paraffin-embedded Sections) (IF (p)), Immunohistochemistry (Paraffin-embedded Sections) (IHC (p))

Product Details

Immunogen:	KLH conjugated synthetic phosphopeptide derived from human DVL2 around the phosphorylation site of Thr224
Isotype:	IgG
Specificity:	This antibody will recognize DVL3 when phosphorylated at Thr205
Cross-Reactivity:	Human, Mouse, Rat
Purification:	Purified by Protein A.

Target Details

Target:	DVL2
---------	------

Target Details

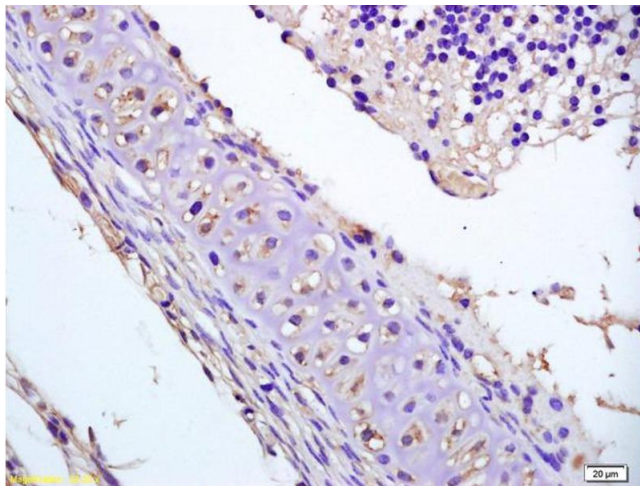
Alternative Name:	DVL2 (DVL2 Products)
Background:	<p>Synonyms: Segment polarity protein dishevelled homolog DVL-2, Dishevelled-2, DSH homolog 2, DVL2</p> <p>Background: Participates in Wnt signaling by binding to the cytoplasmic C-terminus of frizzled family members and transducing the Wnt signal to down-stream effectors. Promotes internalization and degradation of frizzled proteins upon Wnt signaling. Plays a role both in canonical and non-canonical Wnt signaling. Plays a role in the signal transduction pathways mediated by multiple Wnt genes (By similarity).</p>
Gene ID:	1856
UniProt:	O14641
Pathways:	Tube Formation

Application Details

Application Notes:	WB 1:300-5000 IHC-P 1:200-400 IF(IHC-P) 1:50-200
Restrictions:	For Research Use only

Handling

Format:	Liquid
Concentration:	1 µg/µL
Buffer:	0.01M TBS(pH 7.4) with 1 % BSA, 0.02 % Proclin300 and 50 % Glycerol.
Preservative:	ProClin
Precaution of Use:	This product contains ProClin: a POISONOUS AND HAZARDOUS SUBSTANCE, which should be handled by trained staff only.
Storage:	4 °C,-20 °C
Storage Comment:	Shipped at 4°C. Store at -20°C for one year. Avoid repeated freeze/thaw cycles.
Expiry Date:	12 months



Immunohistochemistry

Image 1. Formalin-fixed and paraffin embedded mouse embryo labeled with Anti-phospho-DVL2(Thr224) Polyclonal Antibody, Unconjugated (ABIN1386910) at 1:200 followed by conjugation to the secondary antibody and DAB staining.