

Datasheet for ABIN1386922  
**anti-RGC32 antibody (AA 98-137)**

3 Images

1 Publication

[Go to Product page](#)

## Overview

Quantity:	100 µL
Target:	RGC32 (C13orf15)
Binding Specificity:	AA 98-137
Reactivity:	Human, Mouse, Rat
Host:	Rabbit
Clonality:	Polyclonal
Conjugate:	This RGC32 antibody is un-conjugated
Application:	Western Blotting (WB), Immunofluorescence (Paraffin-embedded Sections) (IF (p)), Immunohistochemistry (Paraffin-embedded Sections) (IHC (p))

## Product Details

Immunogen:	KLH conjugated synthetic peptide derived from human RGC32
Isotype:	IgG
Cross-Reactivity:	Human, Mouse, Rat
Purification:	Purified by Protein A.

## Target Details

Target:	RGC32 (C13orf15)
Alternative Name:	RGC32 ( <a href="#">C13orf15 Products</a> )
Background:	Synonyms: RGC32, RGC-32, C13orf15, bA157L14.2, Regulator of cell cycle RGCC, Response

## Target Details

gene to complement 32 protein, RGCC

Background: Modulates the activity of cell cycle-specific kinases. Enhances CDK1 activity. May contribute to the regulation of the cell cycle. May inhibit growth of glioma cells by promoting arrest of mitotic progression at the G2/M transition. Fibrogenic factor contributing to the pathogenesis of renal fibrosis through fibroblast activation.

Gene ID: 28984

UniProt: [Q9H4X1](#)

## Application Details

Application Notes: WB 1:300-5000  
IHC-P 1:200-400  
IF(IHC-P) 1:50-200

Restrictions: For Research Use only

## Handling

Format: Liquid

Concentration: 1 µg/µL

Buffer: 0.01M TBS( pH 7.4) with 1 % BSA, 0.02 % Proclin300 and 50 % Glycerol.

Preservative: ProClin

Precaution of Use: This product contains ProClin: a POISONOUS AND HAZARDOUS SUBSTANCE, which should be handled by trained staff only.

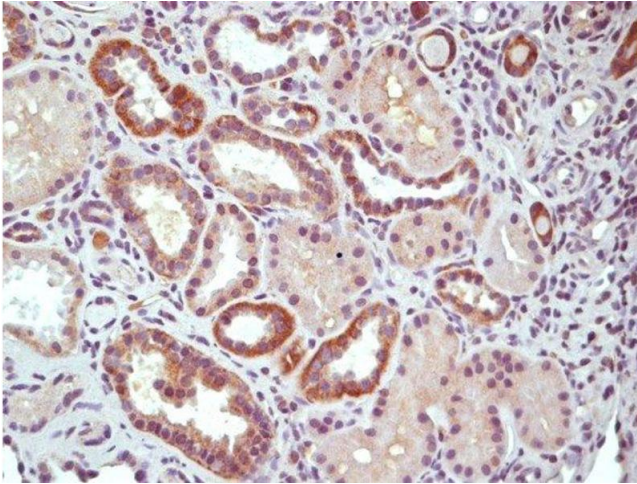
Storage: 4 °C,-20 °C

Storage Comment: Shipped at 4°C. Store at -20°C for one year. Avoid repeated freeze/thaw cycles.

Expiry Date: 12 months

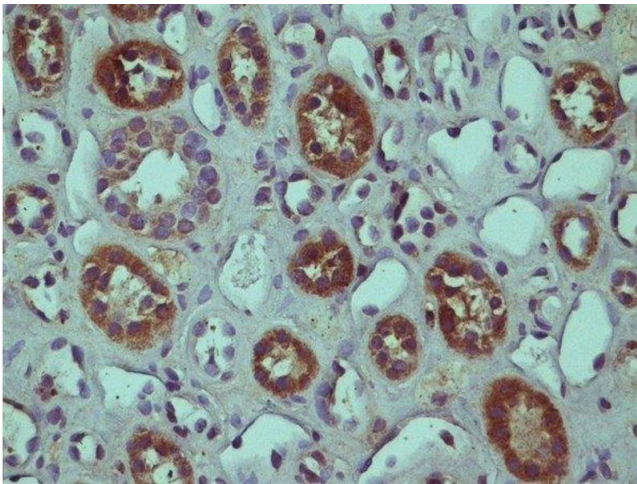
## Publications

Product cited in: Vlaicu, Tatomir, Boodhoo, Ito, Fosbrink, Cudrici, Mekala, Ciriello, Crişan, Boţan, Rus, Rus: "RGC-32 is expressed in the human atherosclerotic arterial wall: Role in C5b-9-induced cell proliferation and migration." in: **Experimental and molecular pathology**, Vol. 101, Issue 2, pp. 221-230, (2016) ([PubMed](#)).



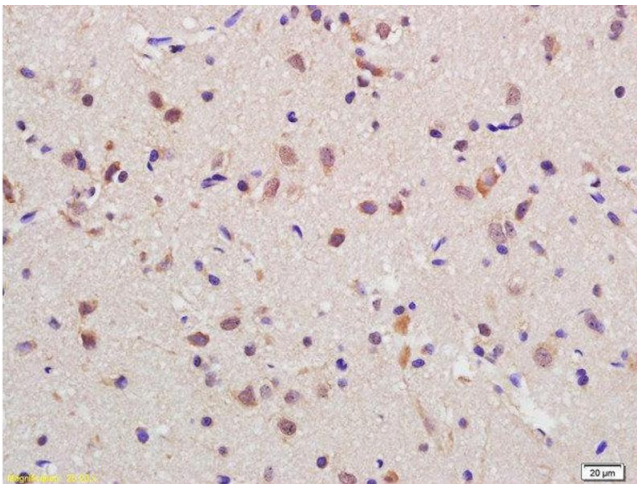
#### Immunohistochemistry (Paraffin-embedded Sections)

**Image 1.** This image was kindly submitted by Horea Rus of the University of Maryland. Paraffin embedded Human kidney tissue, Stained with Rabbit Anti-RGC-32 Polyclonal Antibody, Unconjugated at 1:200 dilution followed by the RTU Vectastain kit from Vector.



#### Immunohistochemistry (Paraffin-embedded Sections)

**Image 2.** This image was kindly submitted by Horea Rus of the University of Maryland. Paraffin embedded Human kidney tissue, Stained with Rabbit Anti-RGC-32 Polyclonal Antibody, Unconjugated at 1:200 dilution followed by the RTU Vectastain kit from Vector.



#### Immunohistochemistry (Paraffin-embedded Sections)

**Image 3.** Formalin-fixed and paraffin embedded rat brain labeled with Anti-RGC32 Polyclonal Antibody, Unconjugated at 1:200 followed by conjugation to the secondary antibody and DAB staining