

Datasheet for ABIN1386979
anti-IGSF21 antibody (AA 90-140)[Go to Product page](#)

1 Image

Overview

Quantity:	100 µL
Target:	IGSF21
Binding Specificity:	AA 90-140
Reactivity:	Human, Mouse, Rat
Host:	Rabbit
Clonality:	Polyclonal
Conjugate:	This IGSF21 antibody is un-conjugated
Application:	Western Blotting (WB), Immunofluorescence (Paraffin-embedded Sections) (IF (p)), Immunohistochemistry (Paraffin-embedded Sections) (IHC (p))

Product Details

Immunogen:	KLH conjugated synthetic peptide derived from human IGSF21
Isotype:	IgG
Cross-Reactivity:	Human, Mouse, Rat
Purification:	Purified by Protein A.

Target Details

Target:	IGSF21
Alternative Name:	IGSF21 (IGSF21 Products)
Background:	Synonyms: FLJ41177, IGSF 21, Immunoglobulin superfamily member 21, immunoglobulin

Target Details

superfamily member 21, MGC15730, RP11 121A23.1, IGS21_HUMAN, IgSF21

Background: IGSF21 is a 467 amino acid secreted protein that contains two Ig-like (immunoglobulin-like) domains and is a member of the immunoglobulin superfamily. Members of this family of proteins usually localize to the cell membrane, and may act as receptors in the immune response pathways. The gene encoding IGSF21 maps to human chromosome 1p36.13 and mouse chromosome 4 D3. Human chromosome 1 spans 260 million base pairs, contains over 3,000 genes and comprises nearly 8 % of the human genome. A large number of disease-associated genes are associated with chromosome 1, including those that are involved in familial adenomatous polyposis, Stickler syndrome, Parkinson's disease, Gaucher disease, schizophrenia and Usher syndrome. Aberrations in chromosome 1 are found in a variety of cancers, including head and neck cancer, malignant melanoma and multiple myeloma.

Gene ID: 84966

UniProt: [Q96ID5](#)

Application Details

Application Notes: WB 1:300-5000
IHC-P 1:200-400
IF(IHC-P) 1:50-200

Restrictions: For Research Use only

Handling

Format: Liquid

Concentration: 1 µg/µL

Buffer: 0.01M TBS(pH 7.4) with 1 % BSA, 0.02 % Proclin300 and 50 % Glycerol.

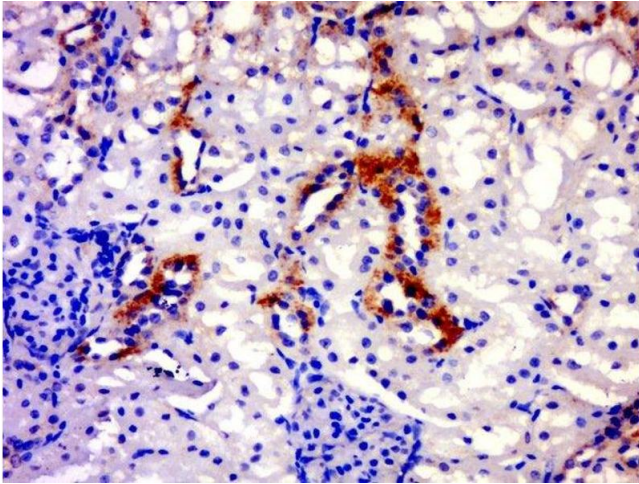
Preservative: ProClin

Precaution of Use: This product contains ProClin: a POISONOUS AND HAZARDOUS SUBSTANCE, which should be handled by trained staff only.

Storage: 4 °C,-20 °C

Storage Comment: Shipped at 4°C. Store at -20°C for one year. Avoid repeated freeze/thaw cycles.

Expiry Date: 12 months



Immunohistochemistry (Paraffin-embedded Sections)

Image 1. Paraformaldehyde-fixed, paraffin embedded rat kidney, Antigen retrieval by boiling in sodium citrate buffer (pH6.0) for 15min, Block endogenous peroxidase by 3% hydrogen peroxide for 20 minutes, Blocking buffer (normal goat serum) at 37°C for 30min, Antibody incubation with IGSF21 Polyclonal Antibody, Unconjugated at 1:500 overnight at 4°C, followed by a conjugated secondary for 20 minutes and DAB staining.