



[Go to Product page](#)

Datasheet for ABIN1386980
anti-GDPD2 antibody (AA 210-255)

1 Image

Overview

Quantity:	100 µL
Target:	GDPD2
Binding Specificity:	AA 210-255
Reactivity:	Human, Mouse, Rat
Host:	Rabbit
Clonality:	Polyclonal
Conjugate:	This GDPD2 antibody is un-conjugated
Application:	Western Blotting (WB), Immunofluorescence (Paraffin-embedded Sections) (IF (p)), Immunohistochemistry (Paraffin-embedded Sections) (IHC (p))

Product Details

Immunogen:	KLH conjugated synthetic peptide derived from human GDPD2/GDE3
Isotype:	IgG
Cross-Reactivity:	Human, Mouse, Rat
Purification:	Purified by Protein A.

Target Details

Target:	GDPD2
Alternative Name:	GDE3 (GDPD2 Products)
Background:	Synonyms: GDE3, OBDPF, Glycerophosphoinositol inositolphosphodiesterase GDPD2,

Target Details

Glycerophosphodiester phosphodiesterase 3, Glycerophosphodiester phosphodiesterase domain-containing protein 2, Osteoblast differentiation promoting factor, GDPD2, UNQ1935/PRO4418

Background: Has glycerophosphoinositol inositolphosphodiesterase activity and specifically hydrolyzes glycerophosphoinositol, with no activity for other substrates such as glycerophosphoinositol 4-phosphate, glycerophosphocholine, glycerophosphoethanolamine, and glycerophosphoserine. Accelerates the program of osteoblast differentiation and growth. May play a role in remodeling of the actin cytoskeleton (By similarity).

Gene ID: 54857

UniProt: [Q9HCC8](#)

Application Details

Application Notes: WB 1:300-5000
IHC-P 1:200-400
IF(IHC-P) 1:50-200

Restrictions: For Research Use only

Handling

Format: Liquid

Concentration: 1 µg/µL

Buffer: 0.01M TBS(pH 7.4) with 1 % BSA, 0.02 % Proclin300 and 50 % Glycerol.

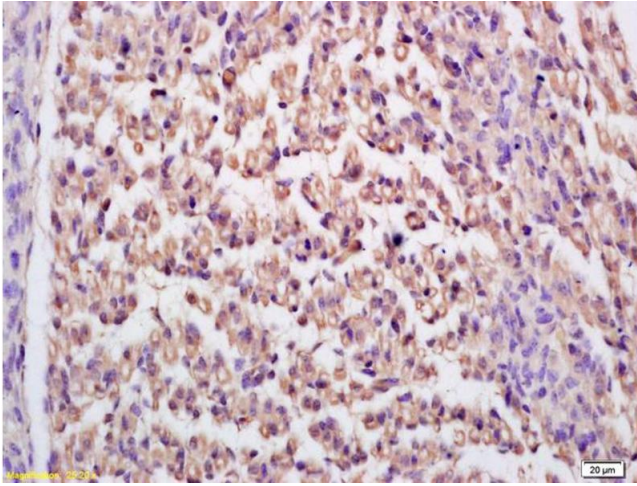
Preservative: ProClin

Precaution of Use: This product contains ProClin: a POISONOUS AND HAZARDOUS SUBSTANCE, which should be handled by trained staff only.

Storage: 4 °C,-20 °C

Storage Comment: Shipped at 4°C. Store at -20°C for one year. Avoid repeated freeze/thaw cycles.

Expiry Date: 12 months



Immunohistochemistry

Image 1. Formalin-fixed and paraffin embedded mouse embryo labeled with Rabbit Anti GDPD2/GDE3 Polyclonal Antibody, Unconjugated (ABIN1386980) at 1:200 followed by conjugation to the secondary antibody and DAB staining