



[Go to Product page](#)

Datasheet for ABIN1387012

anti-SASS6 antibody

1 Image

Overview

Quantity:	100 µL
Target:	SASS6
Reactivity:	Human, Mouse, Rat
Host:	Rabbit
Clonality:	Polyclonal
Conjugate:	This SASS6 antibody is un-conjugated
Application:	Western Blotting (WB), Immunofluorescence (Paraffin-embedded Sections) (IF (p)), Immunohistochemistry (Paraffin-embedded Sections) (IHC (p))

Product Details

Immunogen:	KLH conjugated synthetic peptide derived from human SASS6
Isotype:	IgG
Cross-Reactivity:	Human, Mouse, Rat
Purification:	Purified by Protein A.

Target Details

Target:	SASS6
Alternative Name:	SASS6 (SASS6 Products)
Background:	Synonyms: HsSAS 6, HsSAS6, MGC119440, SAS 6, SAS6, SASS 6, Spindle assembly 6 homolog C. elegans, Spindle assembly 6 homolog, Spindle assembly abnormal protein 6 homolog, PJA2_HUMAN.

Target Details

Background: SAS-6 (spindle assembly abnormal protein 6 homolog, HsSAS-6) is a 657 amino acid protein encoded by the human gene SAS6. SAS-6 is a component of the centrosome that contains one PISA (present in SAS-6) domain. LK4, SAS-6, CPAP and other centriole related proteins are required at different stages of procentriole formation and were associated with different centriolar structures. SAS-6 associates only transiently with nascent procentrioles, whereas CEP135 and CPAP form a core structure within the proximal lumen of both parental and nascent centrioles. SAS-6 is necessary for procentriole formation in human cell lines and is localized asymmetrically next to the centriole at the onset of procentriole formation. SAS-6 levels oscillate during the cell cycle, it is degraded in mitosis starting at anaphase, and it accumulates again at the end of the following G1 phase. The anaphase-promoting complex targets SAS-6 for degradation by the 26S Proteasome, and a KEN box in the C-terminus of SAS-6 is necessary for its degradation. Increased SAS-6 levels promoted the formation of multiple procentrioles forming next to a single centriole.

Gene ID: 163786

Application Details

Application Notes: WB 1:300-5000
IHC-P 1:200-400
IF(IHC-P) 1:50-200

Restrictions: For Research Use only

Handling

Format: Liquid

Concentration: 1 µg/µL

Buffer: 0.01M TBS(pH 7.4) with 1 % BSA, 0.02 % Proclin300 and 50 % Glycerol.

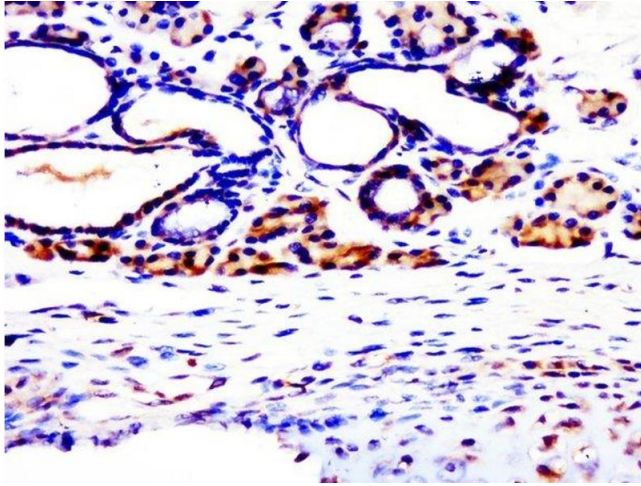
Preservative: ProClin

Precaution of Use: This product contains ProClin: a POISONOUS AND HAZARDOUS SUBSTANCE, which should be handled by trained staff only.

Storage: 4 °C, -20 °C

Storage Comment: Shipped at 4°C. Store at -20°C for one year. Avoid repeated freeze/thaw cycles.

Expiry Date: 12 months



Immunohistochemistry (Paraffin-embedded Sections)

Image 1. Paraformaldehyde-fixed, paraffin embedded rat thyroid, Antigen retrieval by boiling in sodium citrate buffer (pH6.0) for 15min, Block endogenous peroxidase by 3% hydrogen peroxide for 20 minutes, Blocking buffer (normal goat serum) at 37°C for 30min, Antibody incubation with SASS6 Polyclonal Antibody, Unconjugated at 1:400 overnight at 4°C, followed by a conjugated secondary for 20 minutes and DAB staining.