



[Go to Product page](#)

Datasheet for ABIN1387072

anti-TRIM8 antibody

2 Images

Overview

Quantity:	100 µL
Target:	TRIM8
Reactivity:	Human, Mouse, Rat
Host:	Rabbit
Clonality:	Polyclonal
Conjugate:	This TRIM8 antibody is un-conjugated
Application:	Western Blotting (WB), Immunofluorescence (Paraffin-embedded Sections) (IF (p)), Immunohistochemistry (Paraffin-embedded Sections) (IHC (p))

Product Details

Immunogen:	KLH conjugated synthetic peptide derived from human TRIM8/RNF27
Isotype:	IgG
Cross-Reactivity:	Human, Mouse, Rat
Purification:	Purified by Protein A.

Target Details

Target:	TRIM8
Alternative Name:	RNF27 (TRIM8 Products)
Background:	Synonyms: Lioblastoma expressed ring finger protein, Ring finger protein 27, RNF27, RP11-47A8.4, TRIM8, Tripartite mot containing 8, Tripartite mot protein TRIM8, TRIM8_HUMAN. Background: The tripartite motif (TRIM) family of proteins are characterized by a conserved

Target Details

TRIM domain that includes a coiled-coil region, a B-box type zinc finger, one RING finger and three zinc-binding domains. TRIM8 (tripartite motif containing 8), also known as GERP (glioblastoma-expressed RING finger protein) or RNF27 (RING finger protein 27), is a 551 amino acid protein that is thought to function as an E3 ubiquitin-protein ligase that promotes SOCS-1 proteasomal degradation. As a widely expressed homodimer, TRIM8 localizes to nuclear bodies and contains two B box-type zinc fingers and one RING-type zinc finger. TRIM8 is expressed in lung, heart, brain and skeletal muscle, with low levels detected in intestine, placenta, leukocytes and liver. The gene encoding TRIM8 maps to human chromosome 10q24.32.

Gene ID: 81603

UniProt: [Q9BZR9](#)

Application Details

Application Notes: WB 1:300-5000
IHC-P 1:200-400
IF(IHC-P) 1:50-200

Restrictions: For Research Use only

Handling

Format: Liquid

Concentration: 1 µg/µL

Buffer: 0.01M TBS(pH 7.4) with 1 % BSA, 0.02 % Proclin300 and 50 % Glycerol.

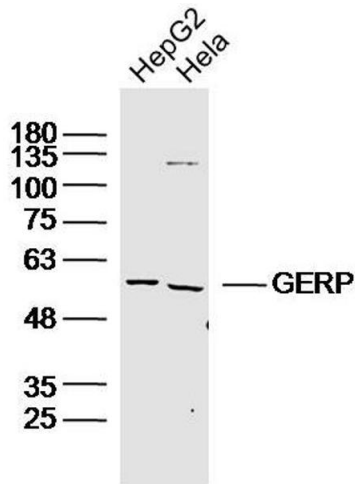
Preservative: ProClin

Precaution of Use: This product contains ProClin: a POISONOUS AND HAZARDOUS SUBSTANCE, which should be handled by trained staff only.

Storage: 4 °C,-20 °C

Storage Comment: Shipped at 4°C. Store at -20°C for one year. Avoid repeated freeze/thaw cycles.

Expiry Date: 12 months



Western Blotting

Image 1. Lane 1: HepG2 lysates Lane 2: HeLa lysates probed with GERP Polyclonal Antibody, Unconjugated at 1:300 dilution and 4°C overnight incubation. Followed by conjugated secondary antibody incubation at 1:10000 for 60 min at 37°C.

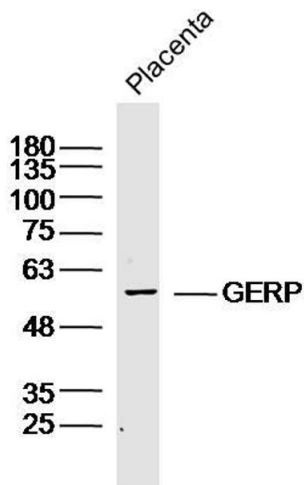


Image 2. Mouse placenta lysates probed with GERP Polyclonal Antibody, Unconjugated at 1:300 dilution and 4°C overnight incubation. Followed by conjugated secondary antibody incubation at 1:10000 for 60 min at 37°C.