



[Go to Product page](#)

Datasheet for ABIN1387106
anti-PINX1 antibody (AA 85-133)

1 Image

Overview

Quantity:	100 µL
Target:	PINX1
Binding Specificity:	AA 85-133
Reactivity:	Human, Mouse, Rat
Host:	Rabbit
Clonality:	Polyclonal
Conjugate:	This PINX1 antibody is un-conjugated
Application:	Western Blotting (WB), Immunofluorescence (Paraffin-embedded Sections) (IF (p)), Immunohistochemistry (Paraffin-embedded Sections) (IHC (p))

Product Details

Immunogen:	KLH conjugated synthetic peptide derived from human PINX-1
Isotype:	IgG
Cross-Reactivity:	Human, Mouse, Rat
Purification:	Purified by Protein A.

Target Details

Target:	PINX1
Alternative Name:	PINX-1 (PINX1 Products)
Background:	Synonyms: LPTL, LPTS, PIN2/TERF1-interacting telomerase inhibitor 1, Liver-related putative

Target Details

tumor suppressor, Pin2-interacting protein X1, Protein 67-11-3, TRF1-interacting protein 1, PINX1

Background: Microtubule-binding protein essential for faithful chromosome segregation.

Mediates TRF1 and TERT accumulation in nucleolus and enhances TRF1 binding to telomeres.

Inhibits telomerase activity. May inhibit cell proliferation and act as tumor suppressor.

Gene ID: 54984

UniProt: [Q96BK5](#)

Application Details

Application Notes: WB 1:300-5000
IHC-P 1:200-400
IF(IHC-P) 1:50-200

Restrictions: For Research Use only

Handling

Format: Liquid

Concentration: 1 µg/µL

Buffer: 0.01M TBS(pH 7.4) with 1 % BSA, 0.02 % Proclin300 and 50 % Glycerol.

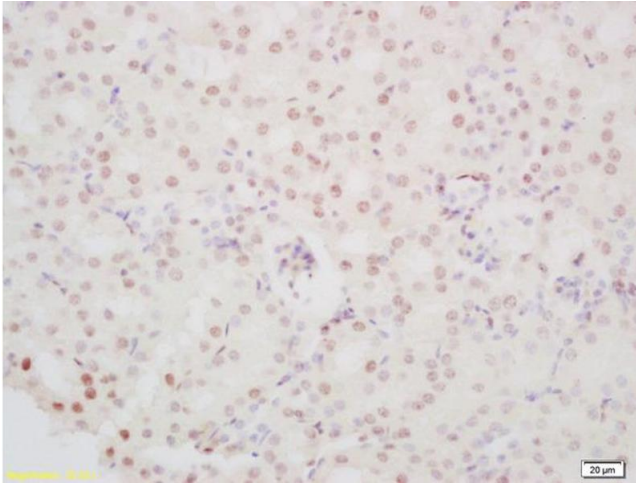
Preservative: ProClin

Precaution of Use: This product contains ProClin: a POISONOUS AND HAZARDOUS SUBSTANCE, which should be handled by trained staff only.

Storage: 4 °C,-20 °C

Storage Comment: Shipped at 4°C. Store at -20°C for one year. Avoid repeated freeze/thaw cycles.

Expiry Date: 12 months



Immunohistochemistry

Image 1. Formalin-fixed and paraffin embedded mouse kidney labeled with Anti-PINX-1 Polyclonal Antibody, Unconjugated (ABIN1387106) at 1:200 followed by conjugation to the secondary antibody and DAB staining