

Datasheet for ABIN1387108  
**anti-CDC25C antibody (AA 290-340)**[Go to Product page](#)[2 Images](#)[2 Publications](#)

## Overview

Quantity:	100 µL
Target:	CDC25C
Binding Specificity:	AA 290-340
Reactivity:	Human, Mouse, Rat
Host:	Rabbit
Clonality:	Polyclonal
Conjugate:	This CDC25C antibody is un-conjugated
Application:	Western Blotting (WB), Immunohistochemistry (Paraffin-embedded Sections) (IHC (p)), Immunofluorescence (Paraffin-embedded Sections) (IF (p))

## Product Details

Immunogen:	KLH conjugated synthetic peptide derived from human Cdc25C
Isotype:	IgG
Cross-Reactivity:	Human, Mouse, Rat
Purification:	Purified by Protein A.

## Target Details

Target:	CDC25C
Alternative Name:	Cdc25C ( <a href="#">CDC25C Products</a> )
Background:	Synonyms: CDC25, PPP1R6, M-phase inducer phosphatase 3, Dual specificity phosphatase

## Target Details

Cdc25C, CDC25C

Background: Functions as a dosage-dependent inducer in mitotic control. Tyrosine protein phosphatase required for progression of the cell cycle. When phosphorylated, highly effective in activating G2 cells into prophase. Directly dephosphorylates CDK1 and activates its kinase activity.

Gene ID: 995

UniProt: [P30307](#)

Pathways: [Cell Division Cycle, M Phase](#)

## Application Details

Application Notes: WB 1:300-5000  
IHC-P 1:200-400  
IF(IHC-P) 1:50-200

Restrictions: For Research Use only

## Handling

Format: Liquid

Concentration: 1 µg/µL

Buffer: 0.01M TBS( pH 7.4) with 1 % BSA, 0.02 % Proclin300 and 50 % Glycerol.

Preservative: ProClin

Precaution of Use: This product contains ProClin: a POISONOUS AND HAZARDOUS SUBSTANCE, which should be handled by trained staff only.

Storage: 4 °C,-20 °C

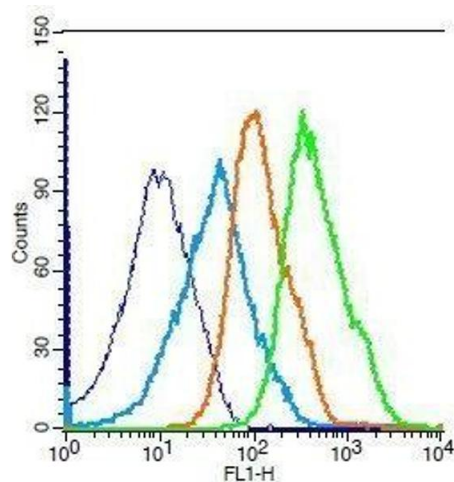
Storage Comment: Shipped at 4°C. Store at -20°C for one year. Avoid repeated freeze/thaw cycles.

Expiry Date: 12 months

## Publications

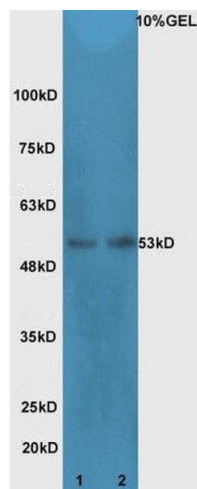
Product cited in: Ghate, Das, Chaudhuri, Panja, Mandal: "Sundew plant, a potential source of anti-inflammatory agents, selectively induces G2/M arrest and apoptosis in MCF-7 cells through upregulation of p53 and Bax/Bcl-2 ratio." in: **Cell death discovery**, Vol. 2, pp. 15062, (2016) ([PubMed](#)).

Ghate, Chaudhuri, Sarkar, Sajem, Panja, Rout, Mandal: "An antioxidant extract of tropical lichen, Parmotrema reticulatum, induces cell cycle arrest and apoptosis in breast carcinoma cell line MCF-7." in: **PLoS ONE**, Vol. 8, Issue 12, pp. e82293, (2013) ([PubMed](#)).



Flow Cytometry

**Image 1.** Mouse splenocytes probed with Rabbit Anti-Cdc25C Polyclonal Antibody, Unconjugated .



Western Blotting

**Image 2.** Lane 1: Mouse intestinal lysates Lane 2: mouse testicular lysates probed with Rabbit Anti-Cdc25C Polyclonal Antibody, Unconjugated (ABIN1387108) at 1:300 overnight at 4 °C. Followed by conjugation to secondary antibody at 1:5000 for 90 min at 37 °C.