

Datasheet for ABIN1387116
anti-SLC39A11 antibody[Go to Product page](#)

1 Image

Overview

Quantity:	100 µL
Target:	SLC39A11
Reactivity:	Human, Mouse, Rat
Host:	Rabbit
Clonality:	Polyclonal
Conjugate:	This SLC39A11 antibody is un-conjugated
Application:	Western Blotting (WB), Immunofluorescence (Paraffin-embedded Sections) (IF (p)), Immunohistochemistry (Paraffin-embedded Sections) (IHC (p))

Product Details

Immunogen:	KLH conjugated synthetic peptide derived from human SLC39A11
Isotype:	IgG
Cross-Reactivity:	Human, Mouse, Rat
Purification:	Purified by Protein A.

Target Details

Target:	SLC39A11
Alternative Name:	SLC39A11 (SLC39A11 Products)
Background:	Synonyms: C17orf26, S39AB_HUMAN, SLC39A11, Solute carrier family 39 metal ion transporter member 11, Solute carrier family 39 member 11, Zinc transporter ZIP11, ZIP-11, ZIP11, Zrt and Irt like protein 11, Zrt- and Irt-like protein 11.

Target Details

Background: Zinc is an essential cofactor that is involved in cell growth and development, as well as in protein, nucleic acid and lipid metabolism. The transport of zinc across the cell membrane is crucial for correct enzyme and overall cell function. SLC39A11 (solute carrier family 39 (metal ion transporter), member 11), also known as ZIP11 (Zrt- and Irt-like protein 11), is a 342 amino acid multi-pass membrane protein belonging to the ZIP transporter family. Expressed as multiple alternatively spliced isoforms, SLC39A11 acts as a zinc-influx transporter and is encoded by a gene located on human chromosome 17, which comprises over 2.5 % of the human genome and encodes over 1,200 genes, some of which are involved in tumor suppression and in the pathogenesis of Li-Fraumeni syndrome, early onset breast cancer and a predisposition to cancers of the ovary, colon, prostate gland and fallopian tubes.

Gene ID: 201266

Application Details

Application Notes: WB 1:300-5000
IHC-P 1:200-400
IF(IHC-P) 1:50-200

Restrictions: For Research Use only

Handling

Format: Liquid

Concentration: 1 µg/µL

Buffer: 0.01M TBS(pH 7.4) with 1 % BSA, 0.02 % Proclin300 and 50 % Glycerol.

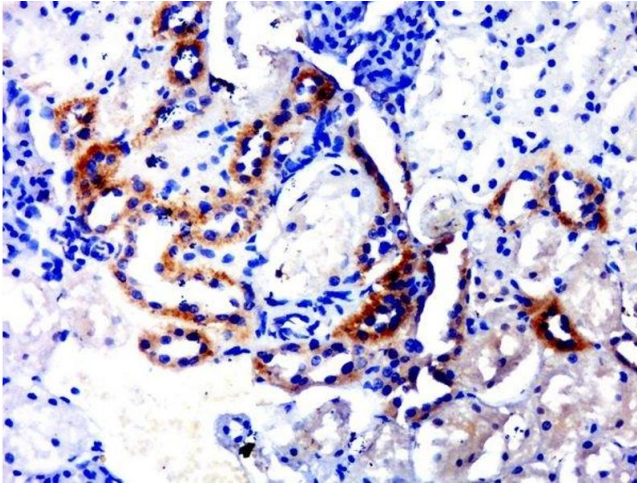
Preservative: ProClin

Precaution of Use: This product contains ProClin: a POISONOUS AND HAZARDOUS SUBSTANCE, which should be handled by trained staff only.

Storage: 4 °C, -20 °C

Storage Comment: Shipped at 4°C. Store at -20°C for one year. Avoid repeated freeze/thaw cycles.

Expiry Date: 12 months



Immunohistochemistry (Paraffin-embedded Sections)

Image 1. Paraformaldehyde-fixed, paraffin embedded rat kidney, Antigen retrieval by boiling in sodium citrate buffer (pH6.0) for 15min, Block endogenous peroxidase by 3% hydrogen peroxide for 20 minutes, Blocking buffer (normal goat serum) at 37°C for 30min, Antibody incubation with SLC39A11 Polyclonal Antibody, Unconjugated at 1:500 overnight at 4°C, followed by a conjugated secondary for 20 minutes and DAB staining.