

Datasheet for ABIN1387125
anti-ITM2A antibody (AA 73-123)[Go to Product page](#)

3 Images

Overview

Quantity:	100 µL
Target:	ITM2A
Binding Specificity:	AA 73-123
Reactivity:	Human, Mouse, Rat
Host:	Rabbit
Clonality:	Polyclonal
Conjugate:	This ITM2A antibody is un-conjugated
Application:	Western Blotting (WB), Flow Cytometry (FACS), Immunofluorescence (Paraffin-embedded Sections) (IF (p)), Immunohistochemistry (Paraffin-embedded Sections) (IHC (p))

Product Details

Immunogen:	KLH conjugated synthetic peptide derived from human ITM2A
Isotype:	IgG
Cross-Reactivity:	Human, Mouse, Rat
Purification:	Purified by Protein A.

Target Details

Target:	ITM2A
Alternative Name:	ITM2A (ITM2A Products)
Background:	Synonyms: E25A, BRICD2A, Integral membrane protein 2A, Protein E25, ITM2A,

Target Details

UNQ603/PRO1189

Background: The type II integral membrane (ITM2) protein family consists of three members ITM2A (also designated E25), ITM2B and ITM2C. ITM2A expression is high in osteogenic and lymphoid tissues, while both ITM2B and ITM2C are expressed in brain. Mutations in the ITM2B gene can lead to familial British dementia (fbd), and autosomal dominant disease characterized by progressive dementia, spasticity, and cerebellar ataxia, or familial Danish dementia (fdd), an autosomal dominant disorder characterized by cataracts, deafness, progressive ataxia, and dementia. The ITM2A 263-amino acid protein contains an N-terminal cytosolic domain, an uncleaved signal anchor sequence, and a tyrosine-rich C-terminal domain. Human ITM2A shares 91 % homology with mouse ITM2A.

Gene ID: 9452

UniProt: [O43736](#)

Application Details

Application Notes: WB 1:300-5000
FCM 1:20-100
IHC-P 1:200-400
IF(IHC-P) 1:50-200

Restrictions: For Research Use only

Handling

Format: Liquid

Concentration: 1 µg/µL

Buffer: 0.01M TBS(pH 7.4) with 1 % BSA, 0.02 % Proclin300 and 50 % Glycerol.

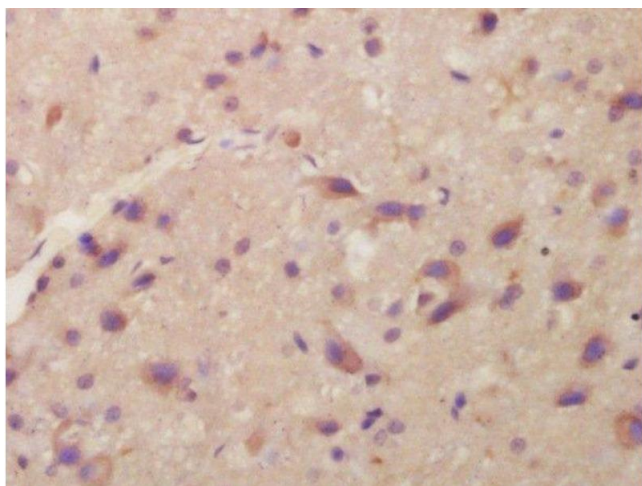
Preservative: ProClin

Precaution of Use: This product contains ProClin: a POISONOUS AND HAZARDOUS SUBSTANCE, which should be handled by trained staff only.

Storage: 4 °C,-20 °C

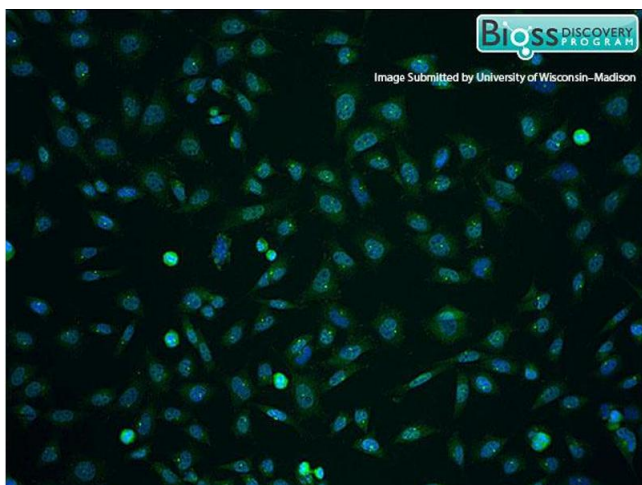
Storage Comment: Shipped at 4°C. Store at -20°C for one year. Avoid repeated freeze/thaw cycles.

Expiry Date: 12 months



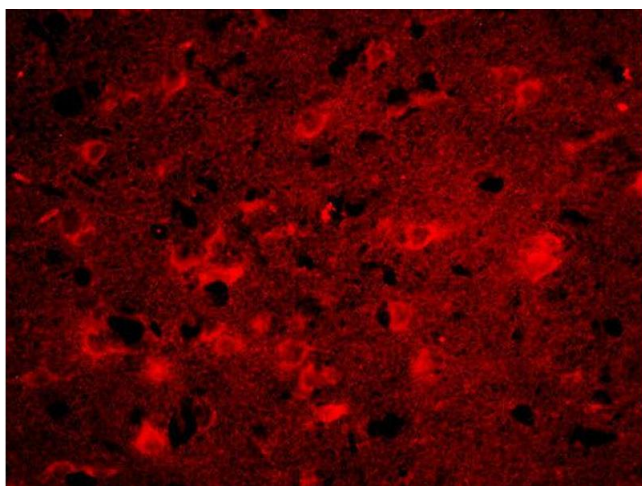
Immunohistochemistry (Paraffin-embedded Sections)

Image 1. Formalin-fixed and paraffin embedded rat brain labeled with Anti-ITM2A Polyclonal Antibody, Unconjugated at 1:200 followed by conjugation to the secondary antibody and DAB staining



Immunofluorescence

Image 2. Formalin-fixed and paraffin embedded rat brain labeled with Anti-ITM2A Polyclonal Antibody, Unconjugated (ABIN1387125) at 1:200 followed by conjugation to the secondary antibody and DAB staining



Immunofluorescence

Image 3. Formalin-fixed and paraffin-embedded rat brain labeled with Anti-ITM2A Polyclonal Antibody, Unconjugated used at 1:200 dilution for 40 minutes at 37°C.